



CITIZEN



Plot 8 Meadow Gardens - 40% share

8 Willow Close, Atherstone, CV9 2DY

40% Shared ownership £94,500



Plot 8 Meadow Gardens - 40% share



Description

Plot 8 Meadow Gardens Purchase Price £94,500 40% Share Total Rent £358.21 pcm

If you would like to apply for this property, please complete our online application form via our Signature Website

Ready to occupy October/November 2024

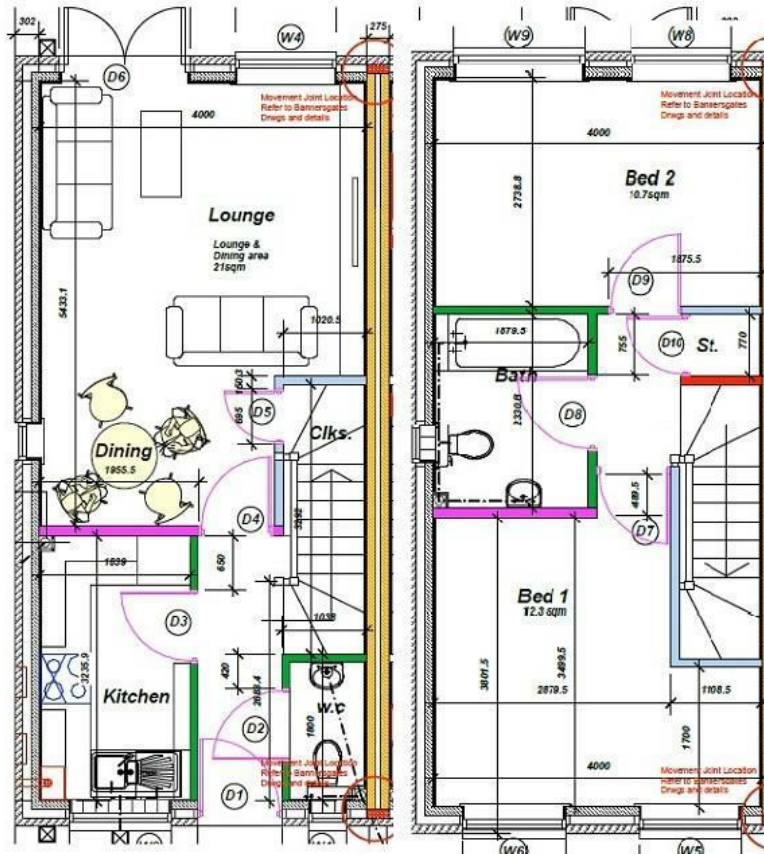
AVAILABLE TO RESERVE NOW

All images/photographs are for illustrative purposes only

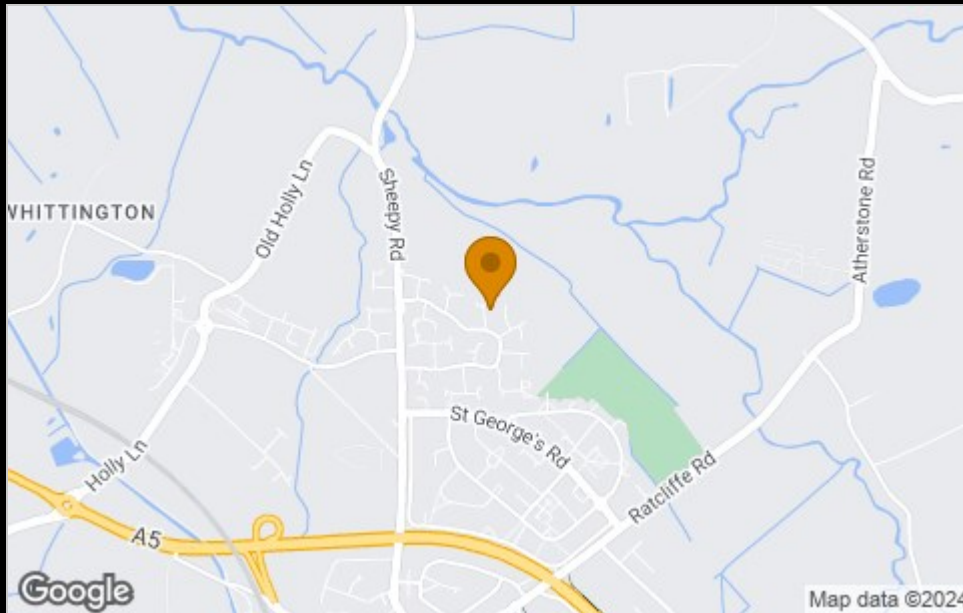
- New Build
- 2 Parking spaces
- Fitted kitchen with oven, hob & extractor
- 2 spacious bedrooms
- uPVC windows
- Semi Detached
- Vinyl flooring to wet areas
- Turf to rear garden
- Downstairs cloakroom
- Near Atherstone



Floor Plan



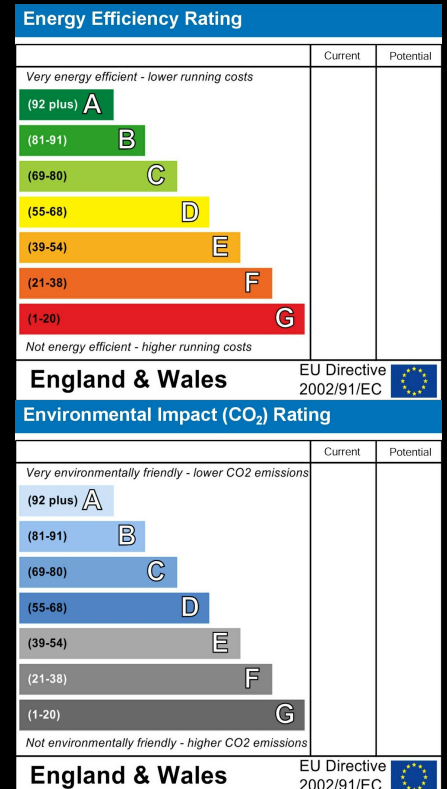
Area Map



Viewing

Please contact our Sales advisor Annette on 07790 336902 if you wish to arrange a viewing appointment for this property or require further information.

Energy Efficiency Graph



These particulars, whilst believed to be accurate are set out as a general outline only for guidance and do not constitute any part of an offer or contract. Intending purchasers should not rely on them as statements of representation of fact, but must satisfy themselves by inspection or otherwise as to their accuracy. No person in this firm's employment has the authority to make or give any representation or warranty in respect of the property.

4040 Lakeside, Solihull, West Midlands, B37 7YN

Email: sales@citizenhousing.org.uk or visit www.citizenhousing.org.uk



CITIZEN



Plot 9 Meadow Gardens - 40% share

9 Willow Close, Atherstone, CV9 2DY

40% Shared ownership £94,500



Plot 9 Meadow Gardens - 40% share



Description

Plot 9 Meadow Gardens Purchase Price £94,500 40% Share Total

Rent £358.21 pcm

If you would like to apply for this property, please complete our online application form via our Signature Website

Ready to occupy October/November 2024

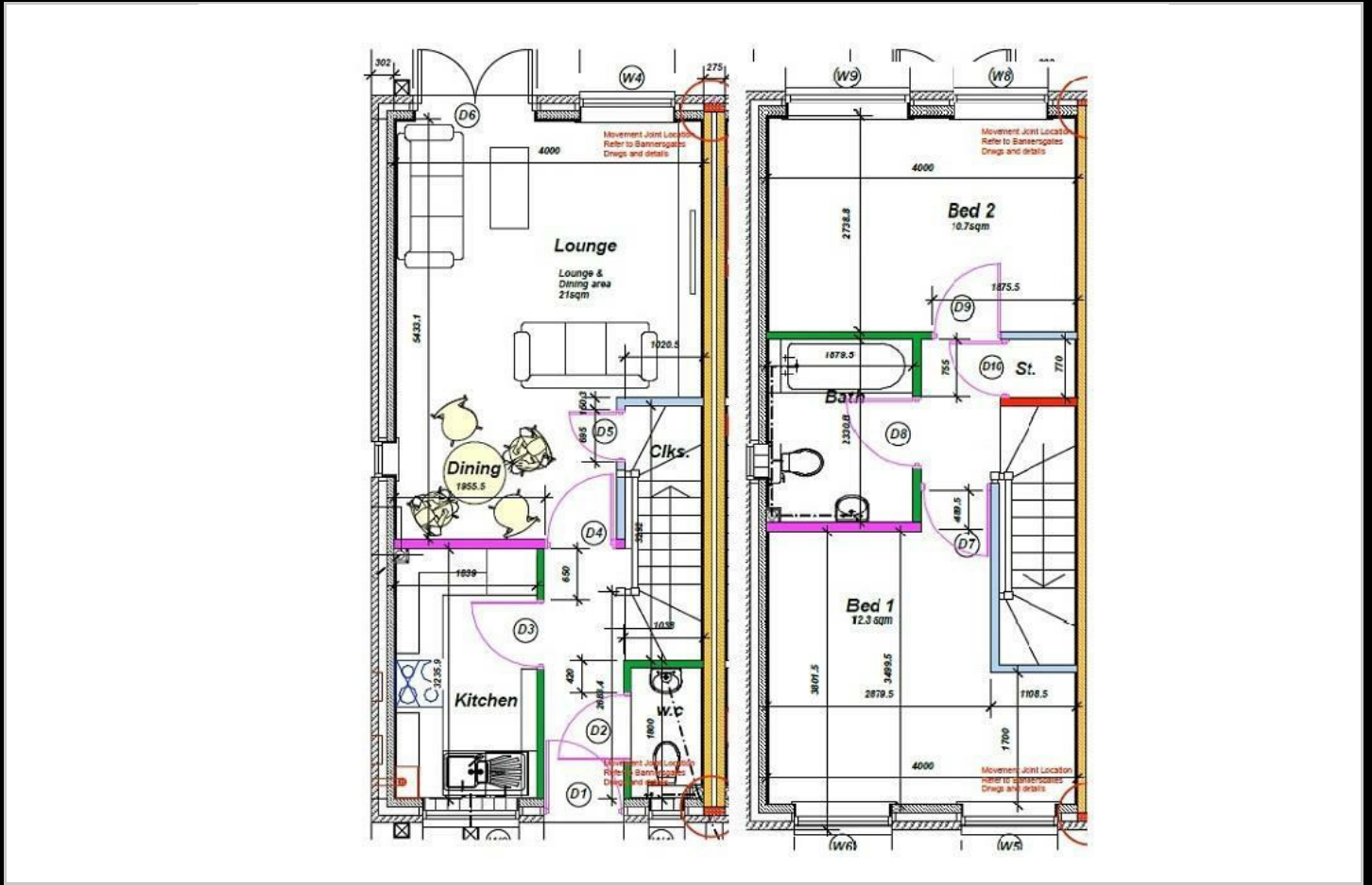
AVAILABLE TO RESERVE NOW

All images/photographs are for illustrative purposes only

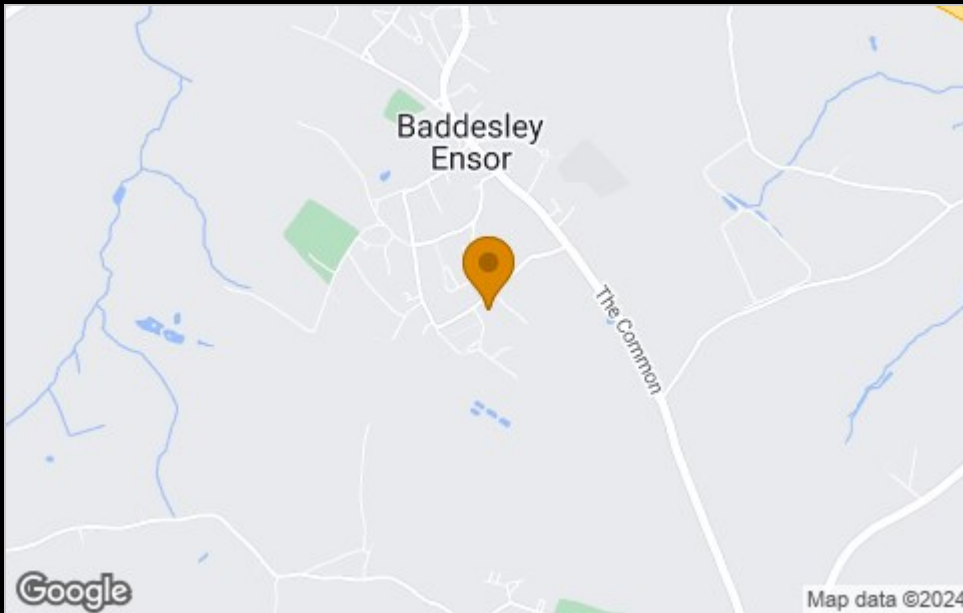
- New Build
- 2 Parking spaces
- Fitted kitchen with oven, hob & extractor
- 2 spacious bedrooms
- uPVC windows
- Semi Detached
- Vinyl flooring to wet areas
- Turf to rear garden
- Downstairs cloakroom
- Near Atherstone



Floor Plan



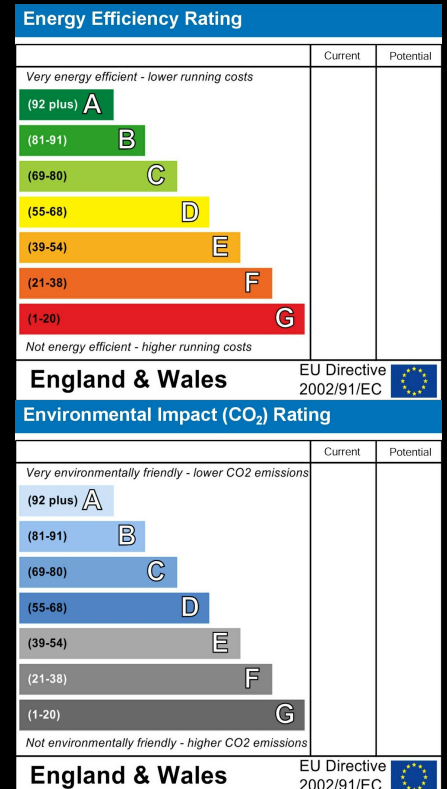
Area Map



Viewing

Please contact our Sales advisor Annette on 07790 336902 if you wish to arrange a viewing appointment for this property or require further information.

Energy Efficiency Graph



These particulars, whilst believed to be accurate are set out as a general outline only for guidance and do not constitute any part of an offer or contract. Intending purchasers should not rely on them as statements of representation of fact, but must satisfy themselves by inspection or otherwise as to their accuracy. No person in this firm's employment has the authority to make or give any representation or warranty in respect of the property.

4040 Lakeside, Solihull, West Midlands, B37 7YN

Email: sales@citizenhousing.org.uk or visit www.citizenhousing.org.uk



CITIZEN



Plot 12 Meadow Gardens - 40% share

12 Willow Close, Atherstone, CV9 2DY

40% Shared ownership £94,500



Plot 12 Meadow Gardens - 40% share



Description

Plot 12 Meadow Gardens Purchase Price £94,500 40% Share Total

Rent £358.21 pcm

If you would like to apply for this property, please complete our online application form via our Signature Website

Ready to occupy October/November 2024

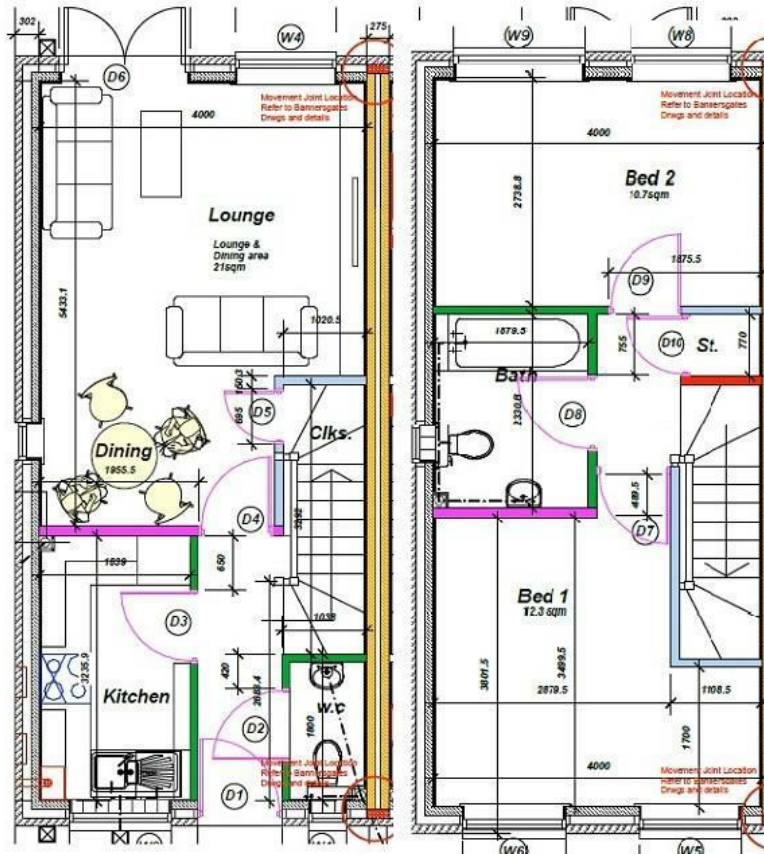
AVAILABLE TO RESERVE NOW

All images/photographs are for illustrative purposes only

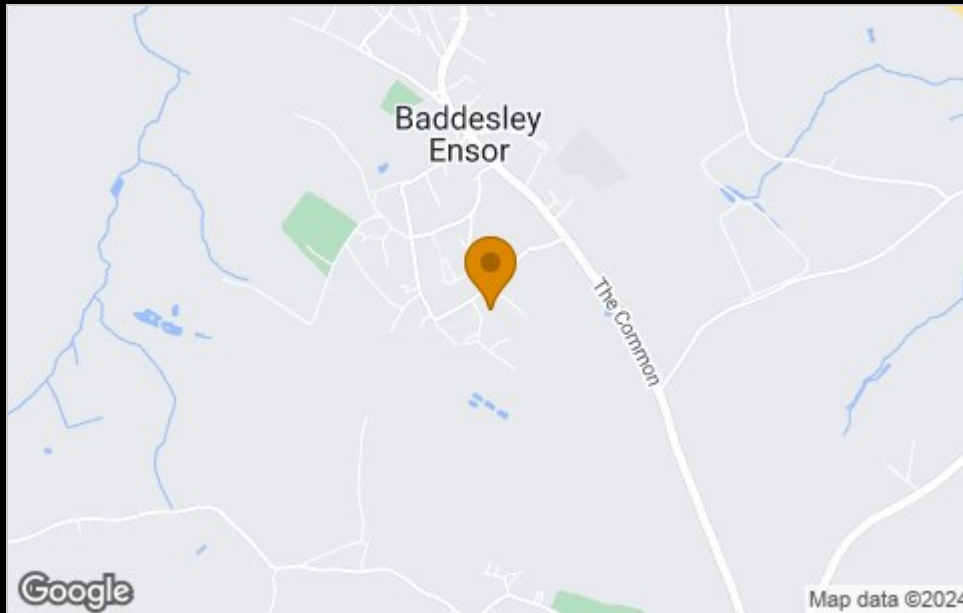
- New Build
- 2 Parking spaces
- Fitted kitchen with oven, hob & extractor
- 2 spacious bedrooms
- uPVC windows
- Semi Detached
- Vinyl flooring to wet areas
- Turf to rear garden
- Downstairs cloakroom
- Near Atherstone



Floor Plan



Area Map



Viewing

Please contact our Sales advisor Annette on 07790 336902 if you wish to arrange a viewing appointment for this property or require further information.

Energy Efficiency Graph

Energy Efficiency Rating		Current	Potential
Very energy efficient - lower running costs			
(92 plus) A			
(81-91) B			
(69-80) C			
(55-68) D			
(39-54) E			
(21-38) F			
(1-20) G			
Not energy efficient - higher running costs			
England & Wales		EU Directive 2002/91/EC	
Environmental Impact (CO ₂) Rating		Current	Potential
Very environmentally friendly - lower CO ₂ emissions			
(92 plus) A			
(81-91) B			
(69-80) C			
(55-68) D			
(39-54) E			
(21-38) F			
(1-20) G			
Not environmentally friendly - higher CO ₂ emissions			
England & Wales		EU Directive 2002/91/EC	

These particulars, whilst believed to be accurate are set out as a general outline only for guidance and do not constitute any part of an offer or contract. Intending purchasers should not rely on them as statements of representation of fact, but must satisfy themselves by inspection or otherwise as to their accuracy. No person in this firm's employment has the authority to make or give any representation or warranty in respect of the property.

4040 Lakeside, Solihull, West Midlands, B37 7YN

Email: sales@citizenhousing.org.uk or visit www.citizenhousing.org.uk



CITIZEN



Plot 13 Meadow Gardens - 40% share

13 Willow Close, Atherstone, CV9 2DY

40% Shared ownership £94,500



Plot 13 Meadow Gardens - 40% share



Description

Plot 13 Meadow Gardens Purchase Price £94,500 40% Share Total

Rent £358.21 pcm

If you would like to apply for this property, please complete our online application form via our Signature Website

Ready to occupy October/November 2024

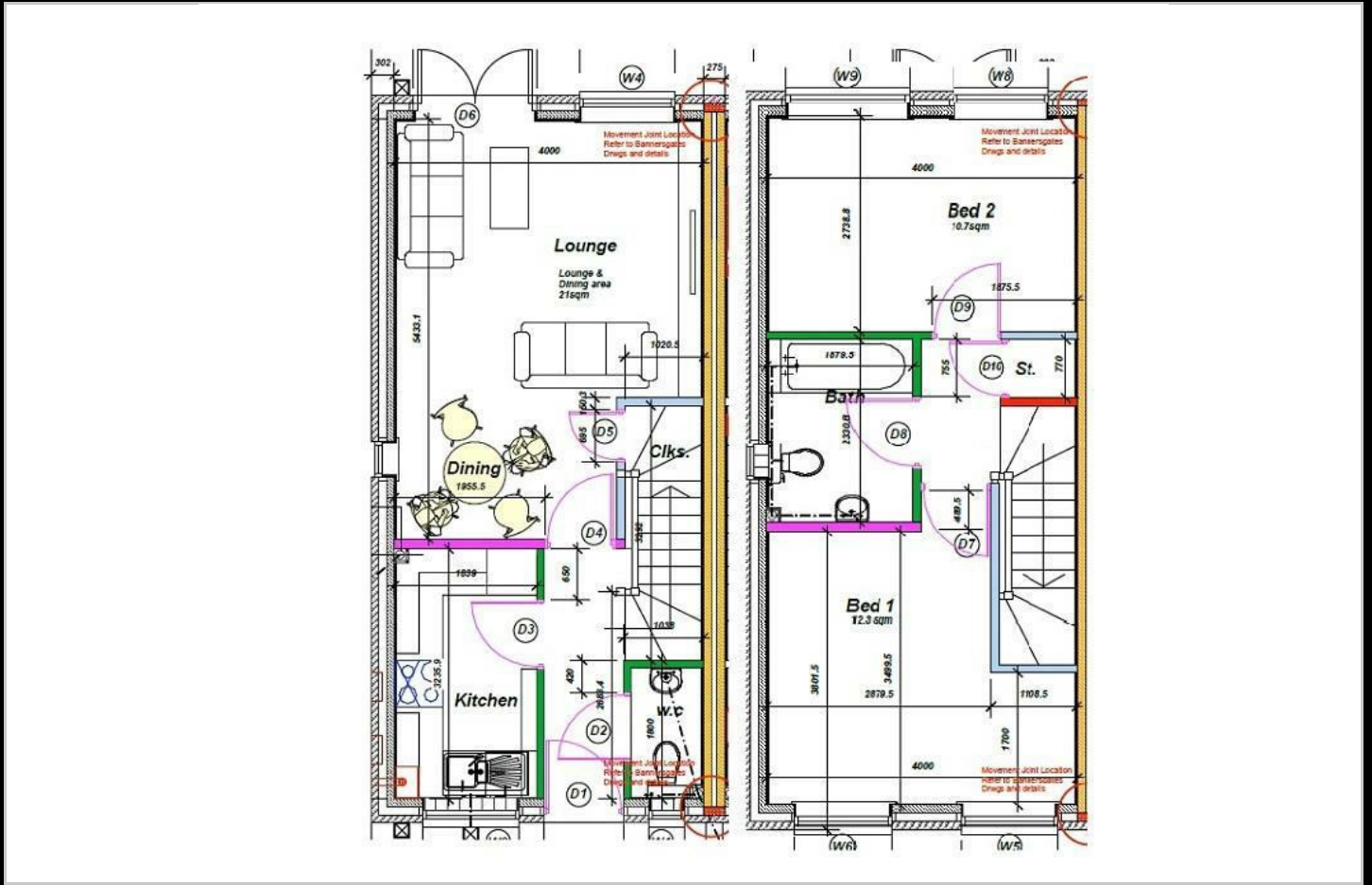
AVAILABLE TO RESERVE NOW

All images/photographs are for illustrative purposes only

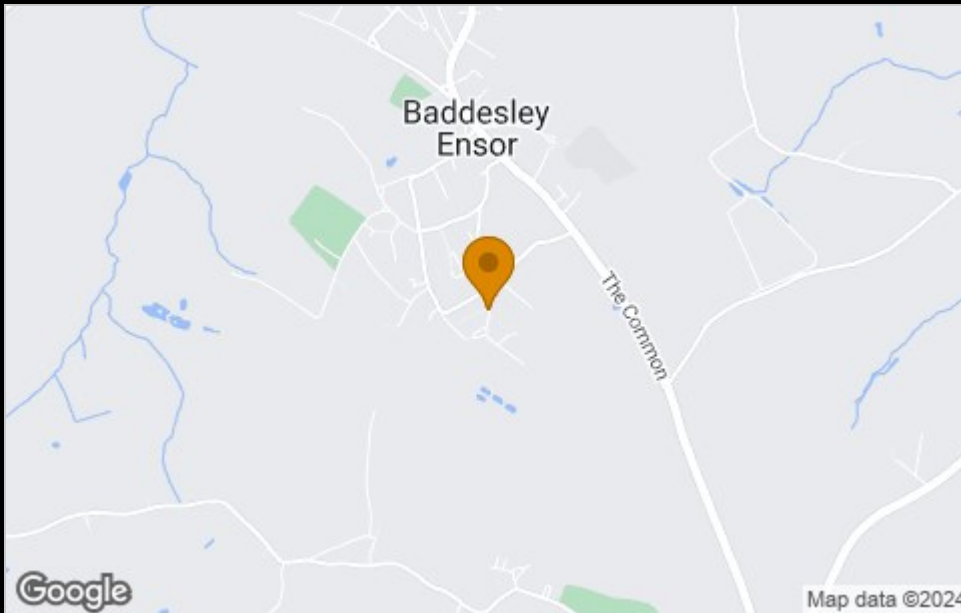
- New Build
- 2 Parking spaces
- Fitted kitchen with oven, hob & extractor
- 2 spacious bedrooms
- uPVC windows
- Semi Detached
- Vinyl flooring to wet areas
- Turf to rear garden
- Downstairs cloakroom
- Near Atherstone



Floor Plan



Area Map



Viewing

Please contact our Sales advisor Annette on 07790 336902 if you wish to arrange a viewing appointment for this property or require further information.

Energy Efficiency Graph

Energy Efficiency Rating		Current	Potential
Very energy efficient - lower running costs			
(92 plus) A			
(81-91) B			
(69-80) C			
(55-68) D			
(39-54) E			
(21-38) F			
(1-20) G			
Not energy efficient - higher running costs			
England & Wales		EU Directive 2002/91/EC	
Environmental Impact (CO ₂) Rating		Current	Potential
Very environmentally friendly - lower CO ₂ emissions			
(92 plus) A			
(81-91) B			
(69-80) C			
(55-68) D			
(39-54) E			
(21-38) F			
(1-20) G			
Not environmentally friendly - higher CO ₂ emissions			
England & Wales		EU Directive 2002/91/EC	

These particulars, whilst believed to be accurate are set out as a general outline only for guidance and do not constitute any part of an offer or contract. Intending purchasers should not rely on them as statements of representation of fact, but must satisfy themselves by inspection or otherwise as to their accuracy. No person in this firm's employment has the authority to make or give any representation or warranty in respect of the property.

4040 Lakeside, Solihull, West Midlands, B37 7YN

Email: sales@citizenhousing.org.uk or visit www.citizenhousing.org.uk



CITIZEN



Plot 14 Meadow Gardens - 40% share

14 Willow Close, Atherstone, CV9 2DY

40% Shared ownership £94,500



Plot 14 Meadow Gardens - 40% share



Description

Plot 14 Meadow Gardens Purchase Price £94,500 40% Share

Total Rent £358.21 pcm

If you would like to apply for this property, please complete our online application form via our Signature Website

Ready to occupy October/November 2024

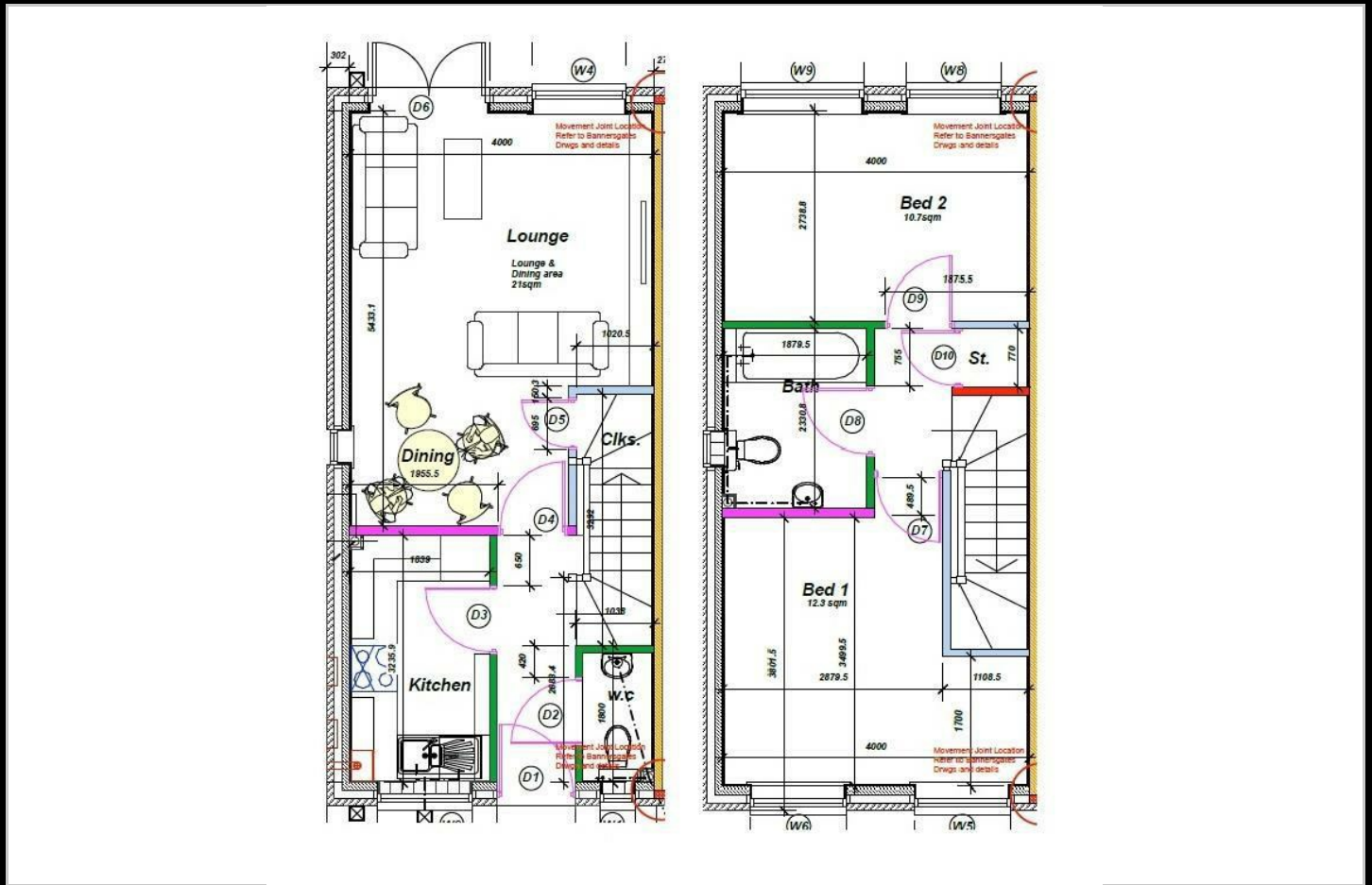
AVAILABLE TO RESERVE NOW

All images/photographs are for illustrative purposes only

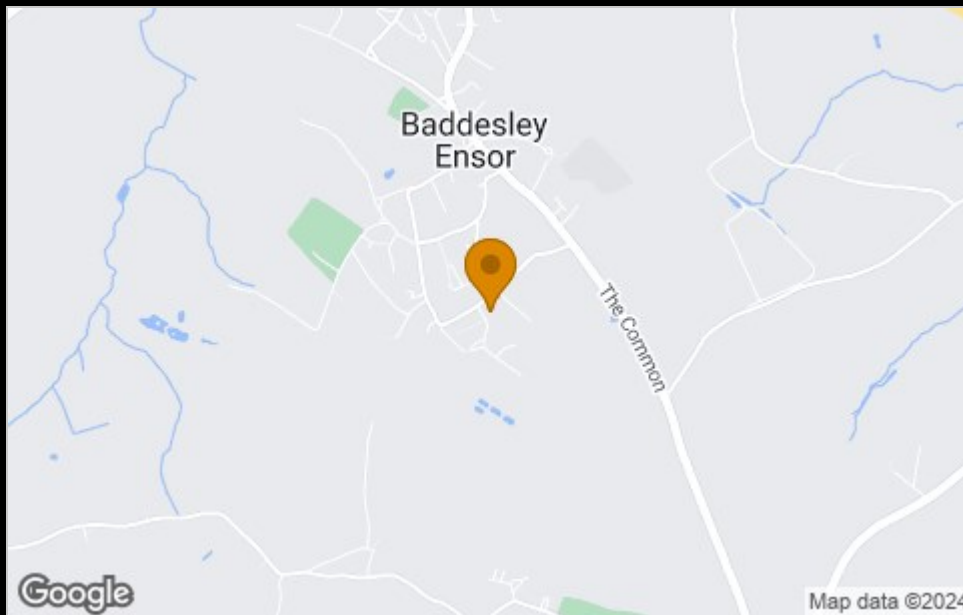
- New Build
- 2 Parking spaces
- Fitted kitchen with oven, hob & extractor
- 2 spacious bedrooms
- uPVC windows
- Semi Detached
- Vinyl flooring to wet areas
- Turf to rear garden
- Downstairs cloakroom
- Near Atherstone



Floor Plan



Area Map



Viewing

Please contact our Sales advisor Annette on 07790 336902 if you wish to arrange a viewing appointment for this property or require further information.

Energy Efficiency Graph

Energy Efficiency Rating		Current	Potential
Very energy efficient - lower running costs			
(92 plus)	A		
(81-91)	B		
(69-80)	C		
(55-68)	D		
(39-54)	E		
(21-38)	F		
(1-20)	G		
Not energy efficient - higher running costs			
England & Wales		EU Directive 2002/91/EC	
Environmental Impact (CO ₂) Rating		Current	Potential
Very environmentally friendly - lower CO ₂ emissions			
(92 plus)	A		
(81-91)	B		
(69-80)	C		
(55-68)	D		
(39-54)	E		
(21-38)	F		
(1-20)	G		
Not environmentally friendly - higher CO ₂ emissions			
England & Wales		EU Directive 2002/91/EC	

These particulars, whilst believed to be accurate are set out as a general outline only for guidance and do not constitute any part of an offer or contract. Intending purchasers should not rely on them as statements of representation of fact, but must satisfy themselves by inspection or otherwise as to their accuracy. No person in this firm's employment has the authority to make or give any representation or warranty in respect of the property.

4040 Lakeside, Solihull, West Midlands, B37 7YN

Email: sales@citizenhousing.org.uk or visit www.citizenhousing.org.uk



CITIZEN



Plot 15 Meadow Gardens - 40% share

15 Willow Close, Atherstone, CV9 2DY

40% Shared ownership £94,500



Plot 15 Meadow Gardens - 40% share



Description

Plot 15 Meadow Gardens Purchase Price £94,500 40% Share

Total Rent £358.21 pcm

If you would like to apply for this property, please complete our online application form via our Signature Website

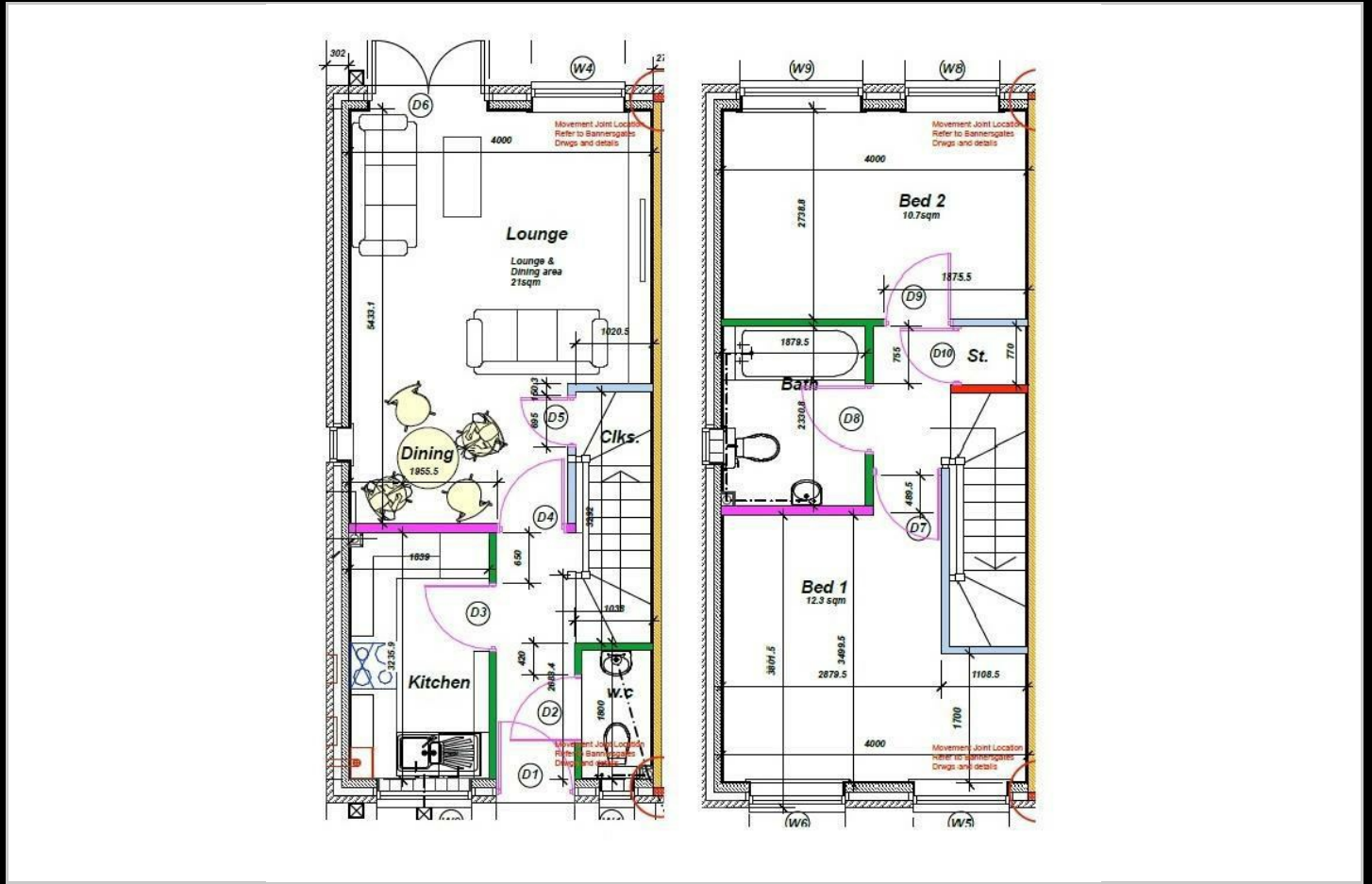
Ready to occupy October/November 2024 - AVAILABLE TO

RESERVE NOW All images/photographs are for illustrative purposes only

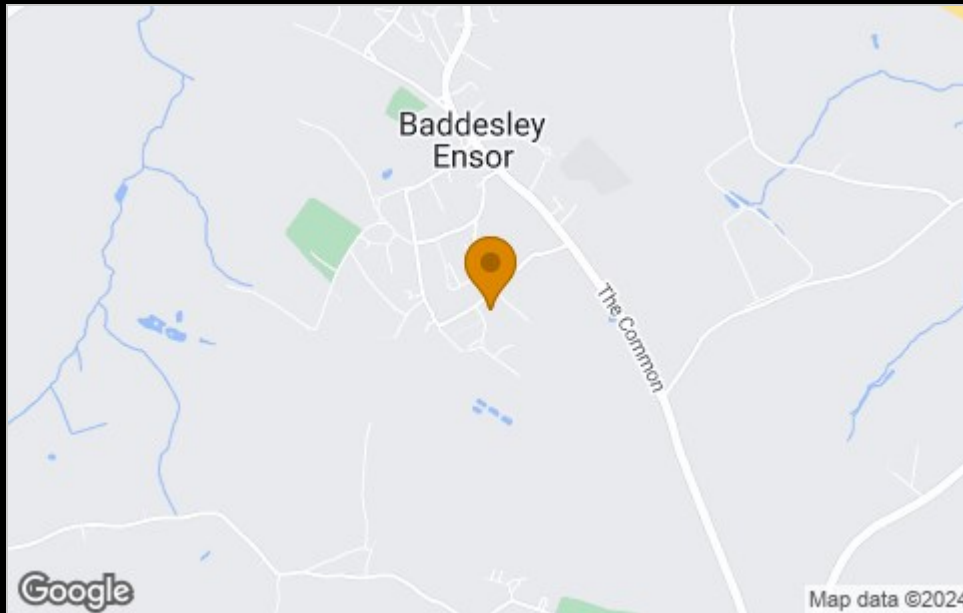
- New Build
- 2 Parking spaces
- Fitted kitchen with oven, hob & extractor
- 2 spacious bedrooms
- uPVC windows
- Semi Detached
- Vinyl flooring to wet areas
- Turf to rear garden
- Downstairs cloakroom
- Near Atherstone



Floor Plan



Area Map



Viewing

Please contact our Sales advisor Annette on 07790 336902 if you wish to arrange a viewing appointment for this property or require further information.

Energy Efficiency Graph

Energy Efficiency Rating		Current	Potential
Very energy efficient - lower running costs			
(92 plus)	A		
(81-91)	B		
(69-80)	C		
(55-68)	D		
(39-54)	E		
(21-38)	F		
(1-20)	G		
Not energy efficient - higher running costs			
England & Wales		EU Directive 2002/91/EC	
Environmental Impact (CO ₂) Rating		Current	Potential
Very environmentally friendly - lower CO ₂ emissions			
(92 plus)	A		
(81-91)	B		
(69-80)	C		
(55-68)	D		
(39-54)	E		
(21-38)	F		
(1-20)	G		
Not environmentally friendly - higher CO ₂ emissions			
England & Wales		EU Directive 2002/91/EC	

These particulars, whilst believed to be accurate are set out as a general outline only for guidance and do not constitute any part of an offer or contract. Intending purchasers should not rely on them as statements of representation of fact, but must satisfy themselves by inspection or otherwise as to their accuracy. No person in this firm's employment has the authority to make or give any representation or warranty in respect of the property.

4040 Lakeside, Solihull, West Midlands, B37 7YN

Email: sales@citizenhousing.org.uk or visit www.citizenhousing.org.uk

