



CITIZEN



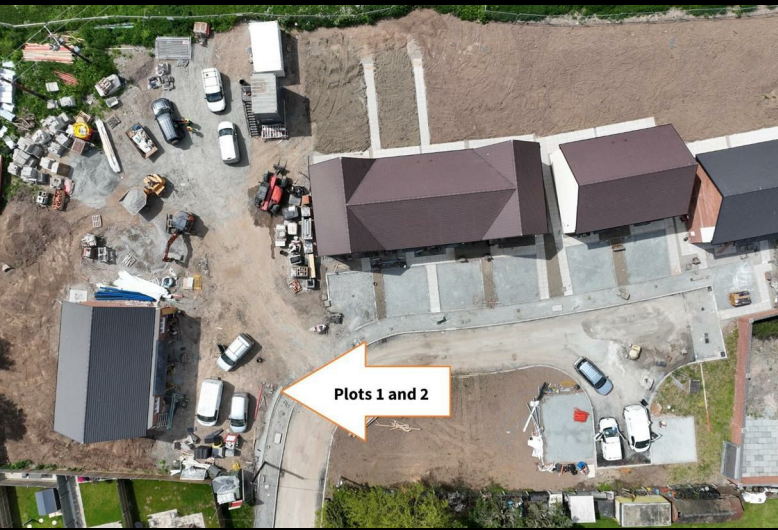
Plot 2 - The Coppice Ph2 - 35% Share

2 Kop Close, Brimfield, SY8 4FB

5% deposit paid £94,465



Plot 2 - The Coppice Ph2 - 35% Share



Description

Plot 2 The Coppice Ph2 - 35% share £94,465 purchase price

Total Rent £460.65 pcm

Please note there is an 80% staircasing restriction on these homes.

AVAILABLE TO OCCUPY

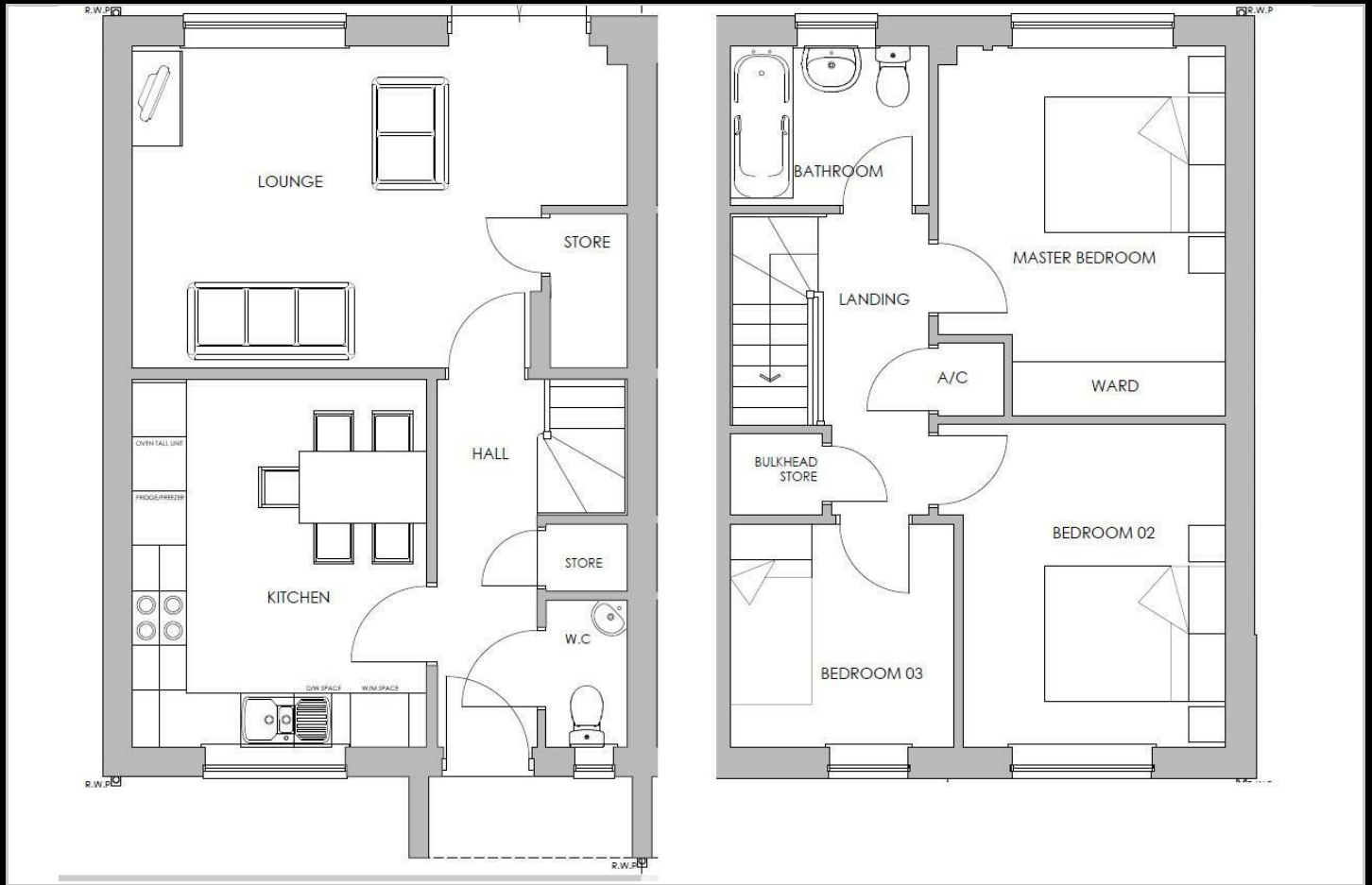
All images/photographs are for illustrative purposes only

- Semi Detached
- Fitted kitchen with oven hob & extractor
- near Ludlow
- Turf to rear garden
- UPvc double glazing
- New Build
- Vinyl flooring to wet areas & downstairs cloakroom
- 2 parking spaces

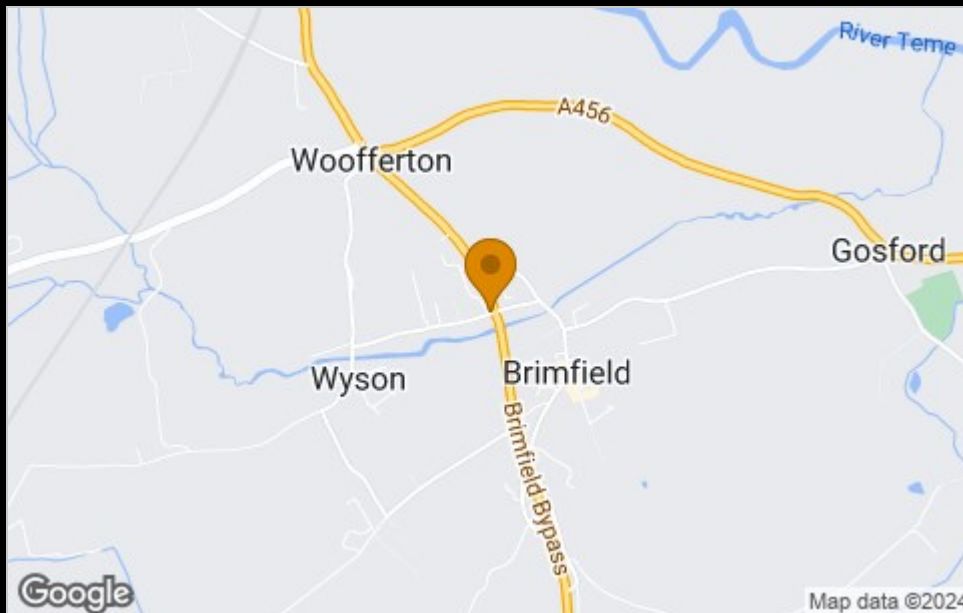




Floor Plan



Area Map



Viewing

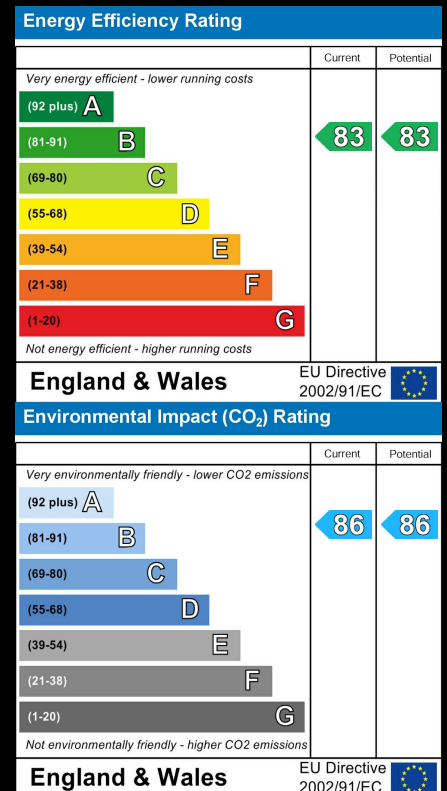
Please contact our Sales Advisor Kellie on 07807 787747 if you wish to arrange a viewing appointment for this property or require further information.

These particulars, whilst believed to be accurate are set out as a general outline only for guidance and do not constitute any part of an offer or contract. Intending purchasers should not rely on them as statements of representation of fact, but must satisfy themselves by inspection or otherwise as to their accuracy. No person in this firm's employment has the authority to make or give any representation or warranty in respect of the property.

4040 Lakeside, Solihull, West Midlands, B37 7YN

Email: sales@citizenhousing.org.uk or visit www.citizenhousing.org.uk

Energy Efficiency Graph





CITIZEN

For illustration only, plots shown are 1
refer to Sales Advisor for render clarity

4



Plot 4 - The Coppice Ph2 - 35% Share

4 Kop Close, Brimfield, SY8 4FB

5% deposit paid £94,465



Plot 4 - The Coppice Ph2 - 35% Share



Description

Plot 4 The Coppice Ph2 - 35% share £94,465 purchase price

Total Rent £460.65 pcm

Please note there is an 80% staircasing restriction on these homes.

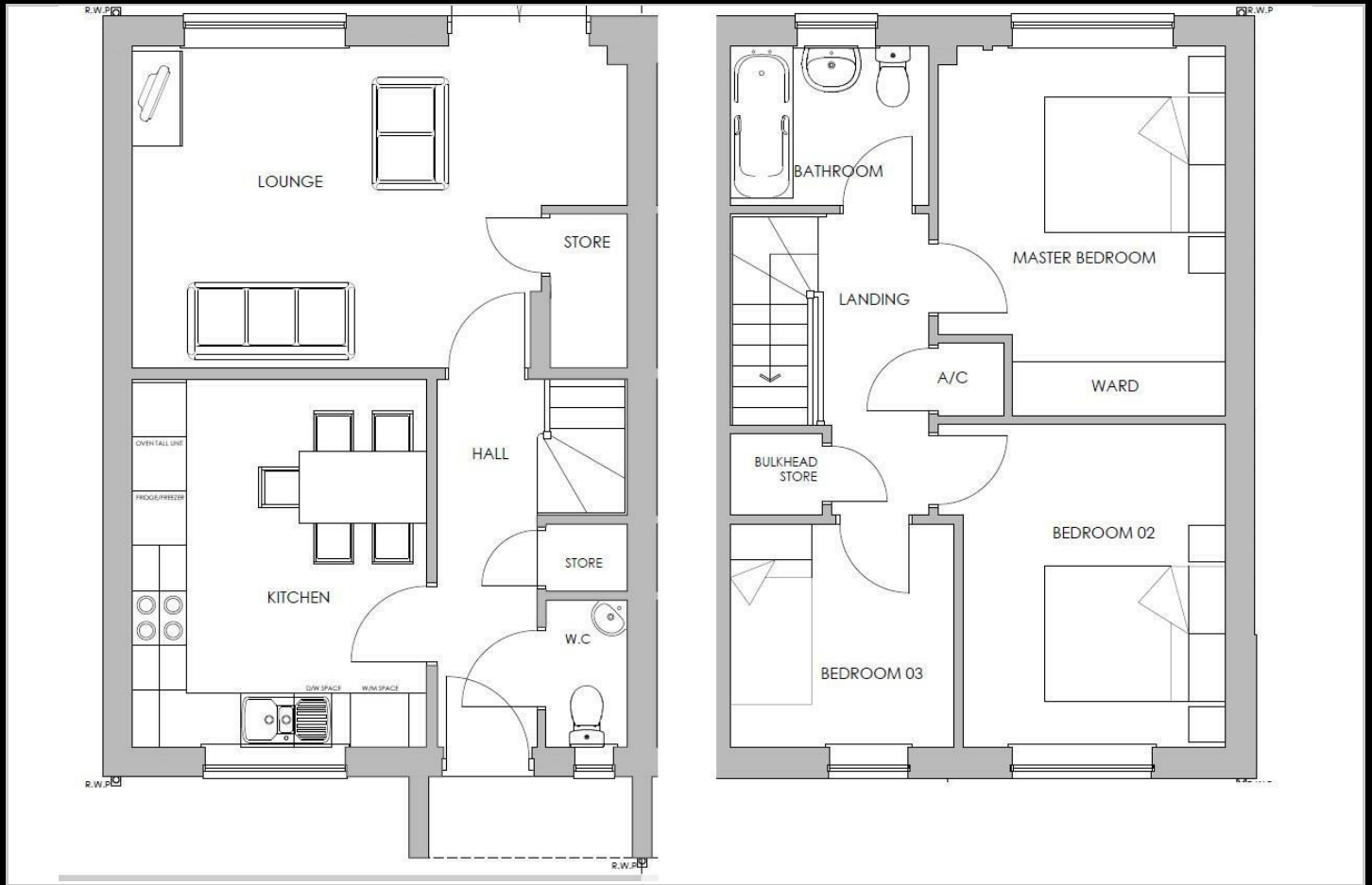
AVAILABLE TO OCCUPY

All images/photographs are for illustrative purposes only

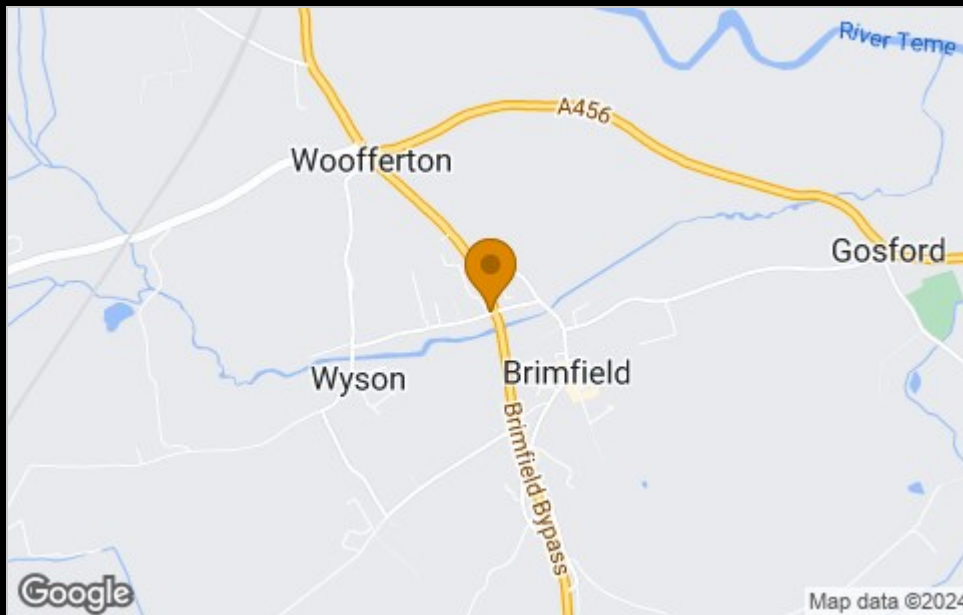
- Semi Detached
- Fitted kitchen with oven hob & extractor
- near Ludlow
- Turf to rear garden
- UPVc double glazing
- New Build
- Vinyl flooring to wet areas & extractor
- Downstairs cloakroom
- 2 parking spaces



Floor Plan



Area Map



Viewing

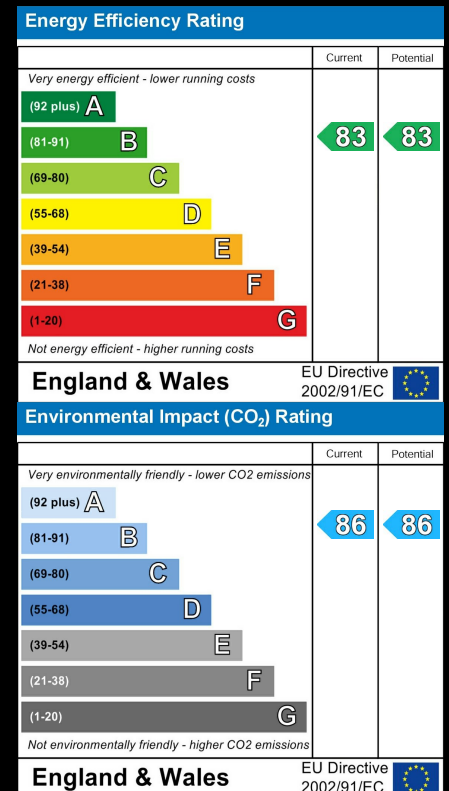
Please contact our Sales Advisor Kellie on 07807 787747 if you wish to arrange a viewing appointment for this property or require further information.

These particulars, whilst believed to be accurate are set out as a general outline only for guidance and do not constitute any part of an offer or contract. Intending purchasers should not rely on them as statements of representation of fact, but must satisfy themselves by inspection or otherwise as to their accuracy. No person in this firm's employment has the authority to make or give any representation or warranty in respect of the property.

4040 Lakeside, Solihull, West Midlands, B37 7YN

Email: sales@citizenhousing.org.uk or visit www.citizenhousing.org.uk

Energy Efficiency Graph





CITIZEN

For illustration only, plots
pictured 11 & 12, please
refer to Sales Advisor on
clarity of render for plots 5
& 6



Plot 5- The Coppice Ph2 - 40% Share

5 Kop Close, Brimfield, SY8 4FB

5% deposit paid £98,000



Plot 5- The Coppice Ph2 - 40% Share



Description

Plot 5 The Coppice Ph2 40% Share Purchase price £98,000

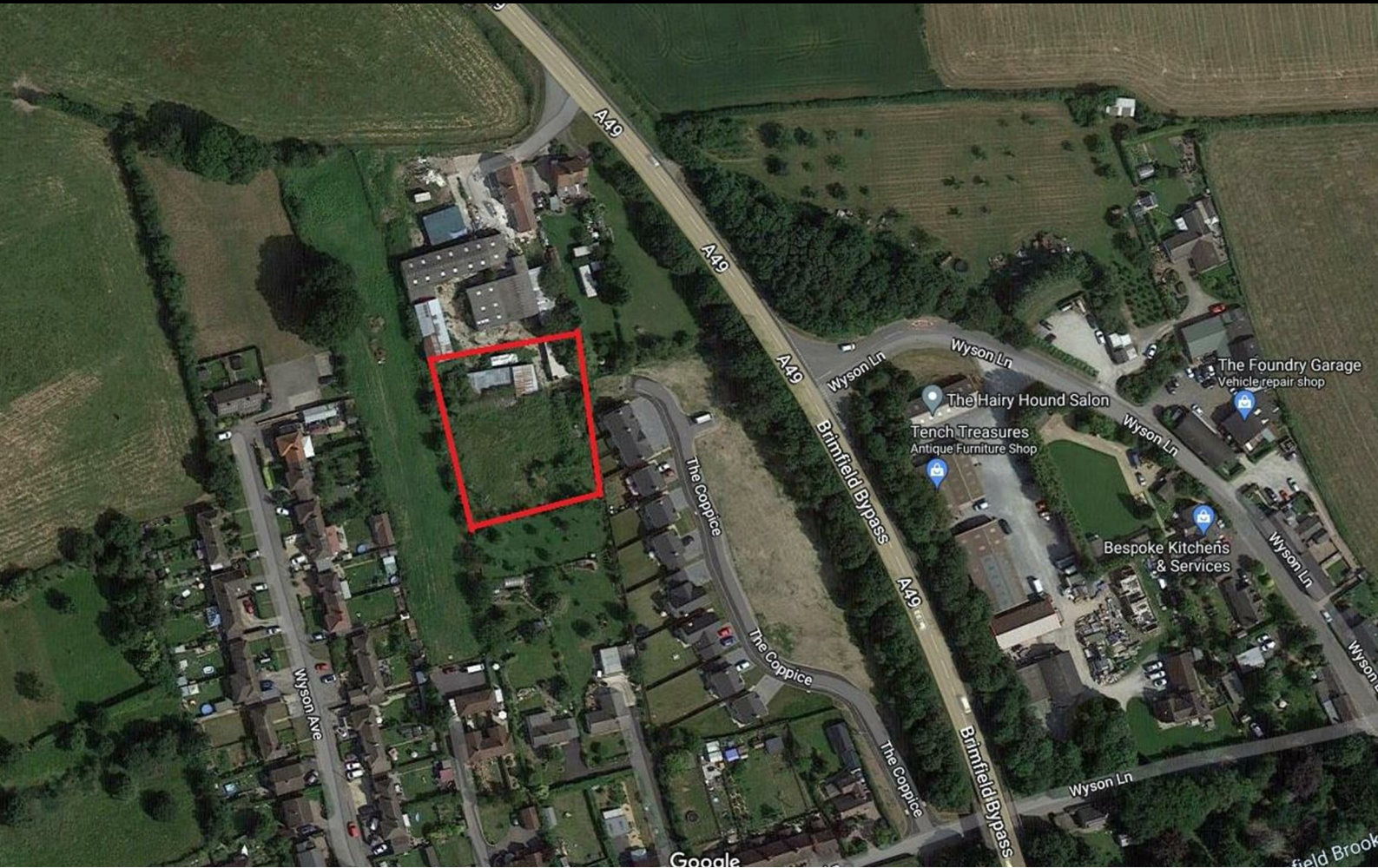
Total Rent £393.73 pcm

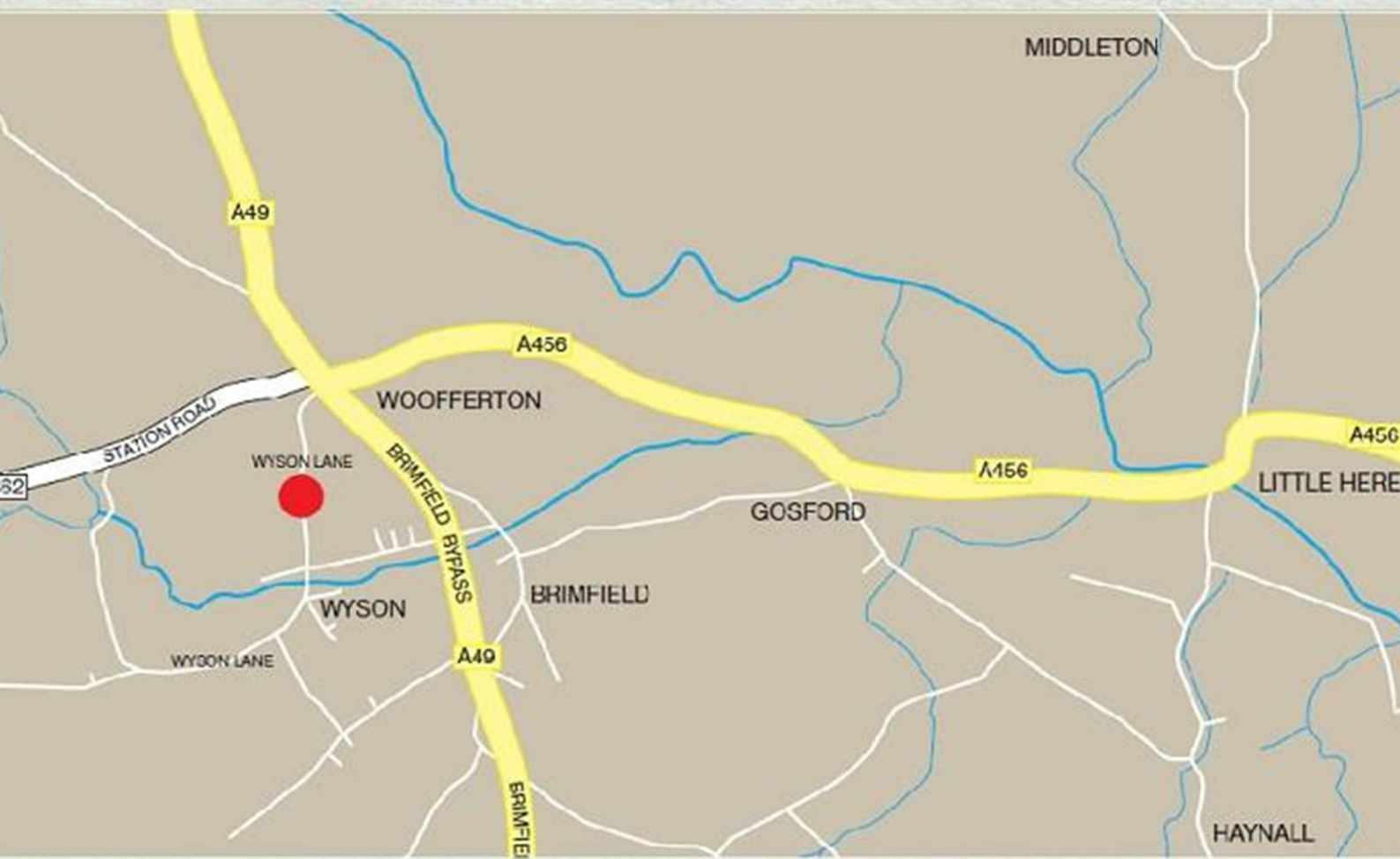
Please note there is an 80% staircasing restriction on these homes.

AVAILABLE NOW

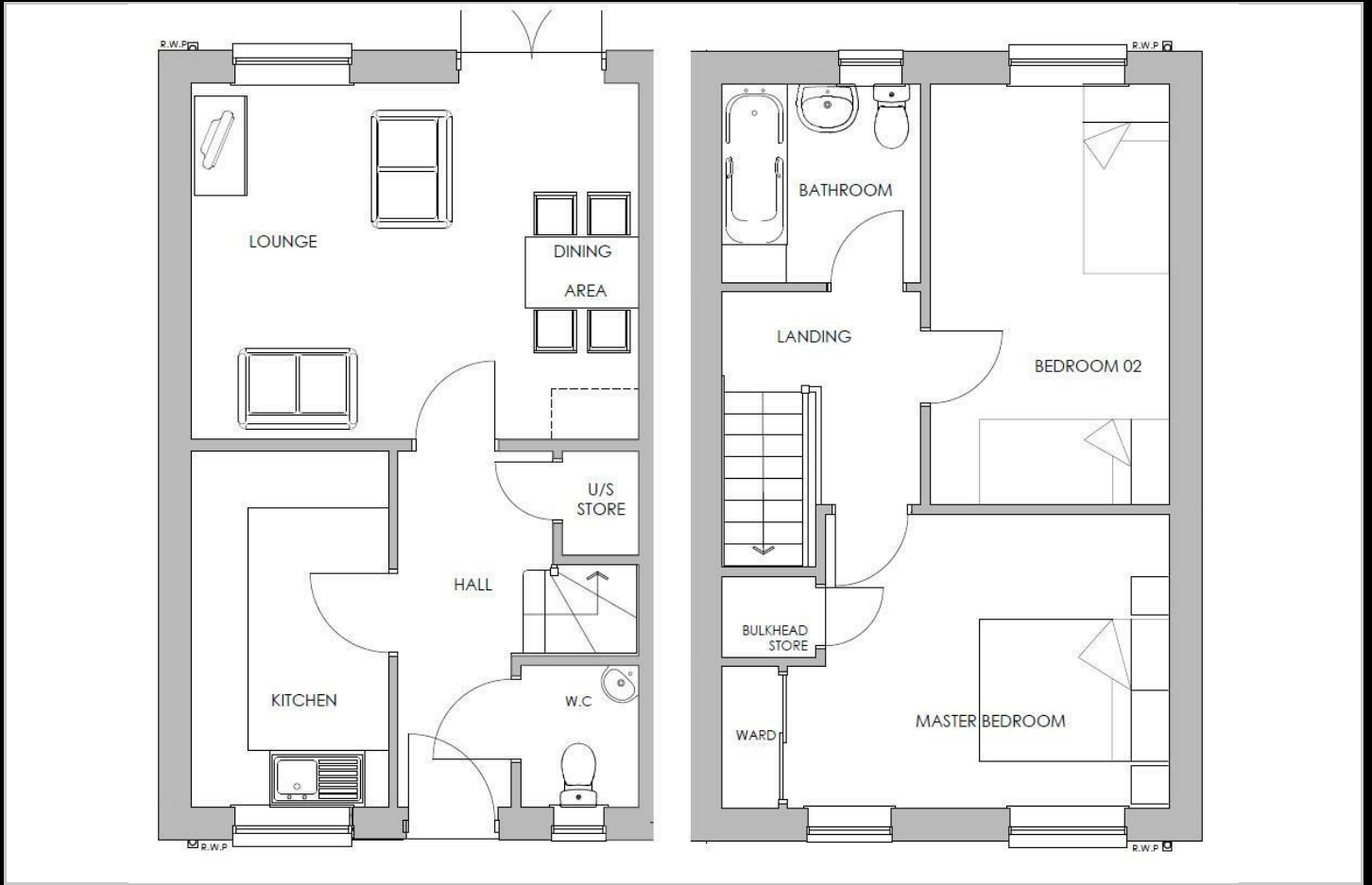
All images/photographs are for illustrative purposes only

- New build
- 2 parking spaces
- Fitted kitchen with oven, hob & extractor
- 2 spacious bedrooms
- Semi detached
- Turf to rear garden
- Vinyl to wet areas
- UPVC double glazing
- downstairs cloakroom
- Near Ludlow

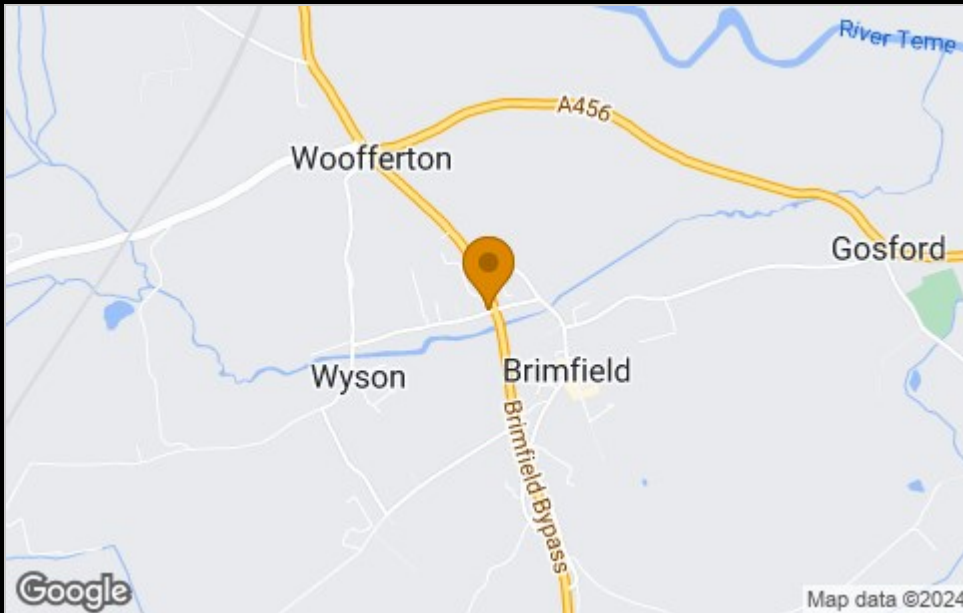




Floor Plan



Area Map



Viewing

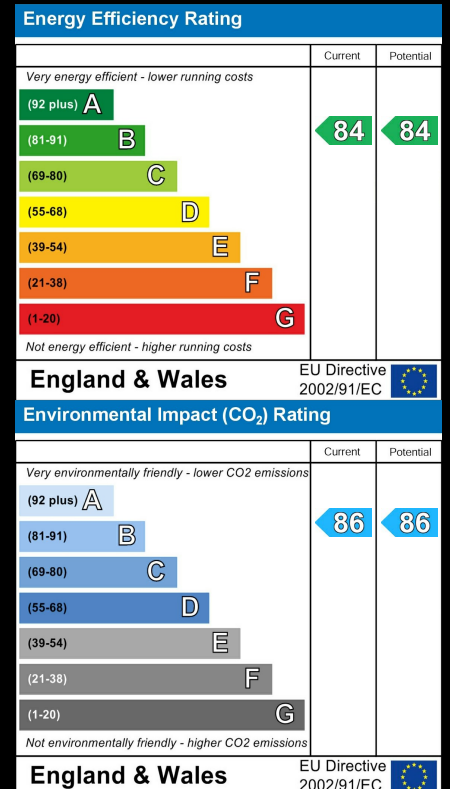
Please contact our Sales Advisor Kellie on 07807 787747 if you wish to arrange a viewing appointment for this property or require further information

These particulars, whilst believed to be accurate are set out as a general outline only for guidance and do not constitute any part of an offer or contract. Intending purchasers should not rely on them as statements of representation of fact, but must satisfy themselves by inspection or otherwise as to their accuracy. No person in this firm's employment has the authority to make or give any representation or warranty in respect of the property.

4040 Lakeside, Solihull, West Midlands, B37 7YN

Email: sales@citizenhousing.org.uk or visit www.citizenhousing.org.uk

Energy Efficiency Graph





CITIZEN

For illustration only, plots
pictured 11 & 12, please
refer to Sales Advisor on
clarity of render for plots 5
& 6



Plot 6- The Coppice Ph2 - 40% Share

6 Kop Close, Brimfield, SY8 4FB

5% deposit paid £98,000



Plot 6- The Coppice Ph2 - 40% Share



Description

Plot 6 The Coppice Ph2 40% Share Purchase price £98,000

Total Rent £393.73 pcm

Please note there is an 80% staircasing restriction on these homes.

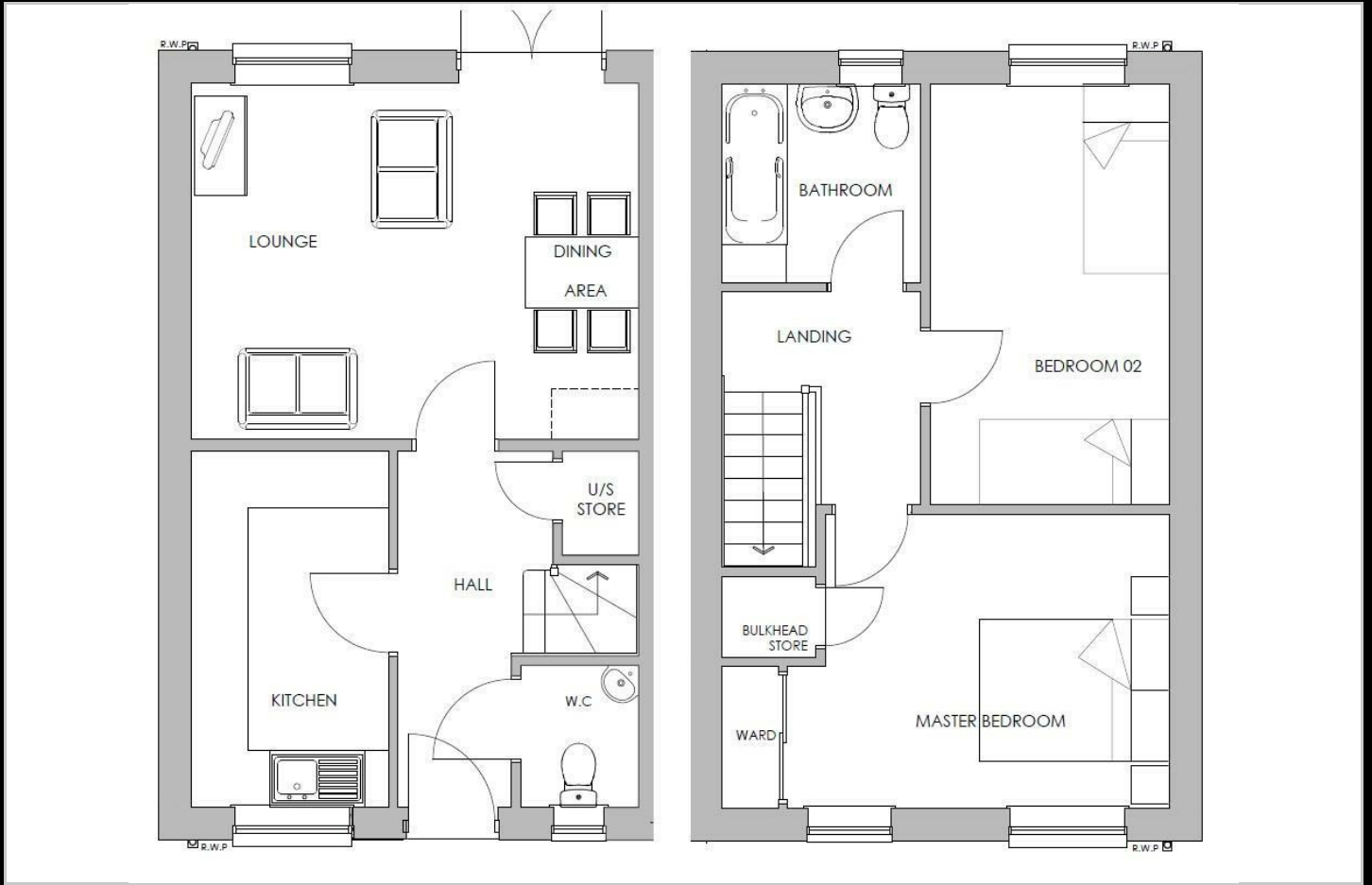
AVAILABLE NOW

All images/photographs are for illustrative purposes only

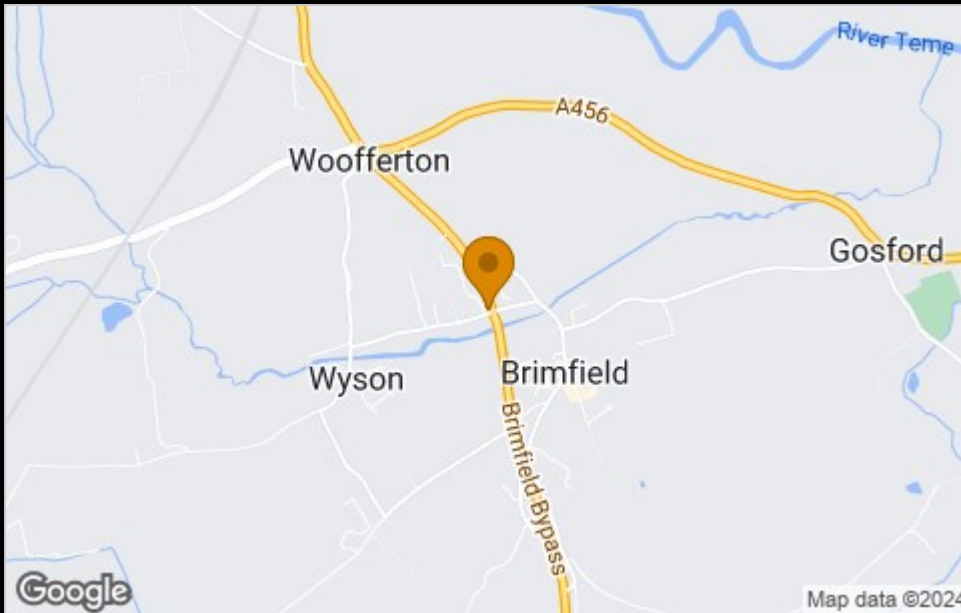
- New build
- 2 parking spaces
- Fitted kitchen with oven, hob & extractor
- 2 spacious bedrooms
- Semi detached
- Turf to rear garden
- Vinyl to wet areas
- UPVC double glazing
- downstairs cloakroom
- Near Ludlow



Floor Plan



Area Map



Viewing

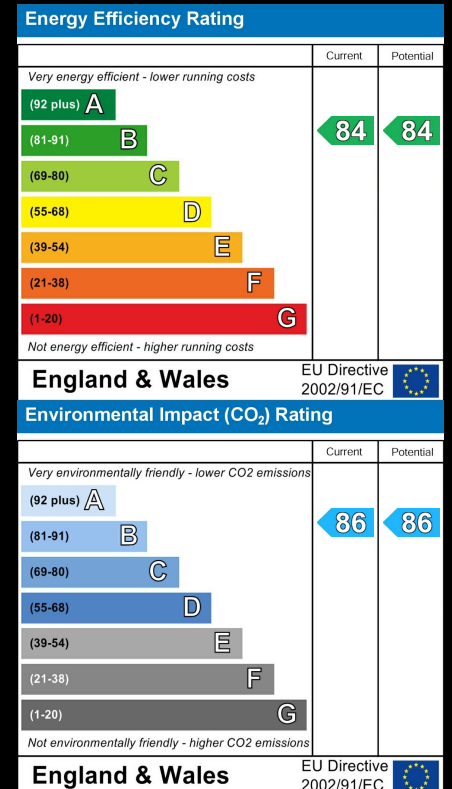
Please contact our Sales Advisor Kellie on 07807 787747 if you wish to arrange a viewing appointment for this property or require further information

These particulars, whilst believed to be accurate are set out as a general outline only for guidance and do not constitute any part of an offer or contract. Intending purchasers should not rely on them as statements of representation of fact, but must satisfy themselves by inspection or otherwise as to their accuracy. No person in this firm's employment has the authority to make or give any representation or warranty in respect of the property.

4040 Lakeside, Solihull, West Midlands, B37 7YN

Email: sales@citizenhousing.org.uk or visit www.citizenhousing.org.uk

Energy Efficiency Graph





CITIZEN



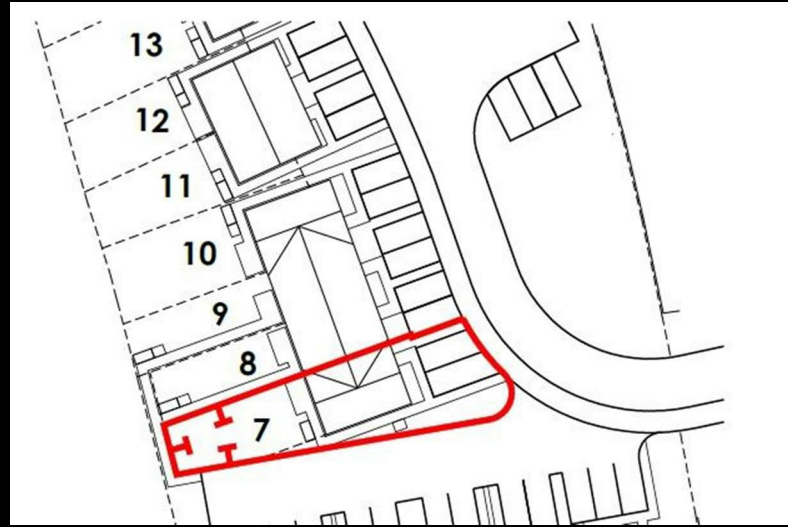
Plot 7 The Coppice Ph2 - 35% Share

7 Kop Close, Brimfield, SY8 4FB

5% deposit paid £93,240



Plot 7 The Coppice Ph2 - 35% Share



Description

Plot 7 The Coppice Ph2 - 35% share £93,240 purchase price Total Rent £455.44 pcm

Please note there is an 80% staircasing restriction on these homes.

If you would like to apply for this property, please complete our online application form via our Signature Website

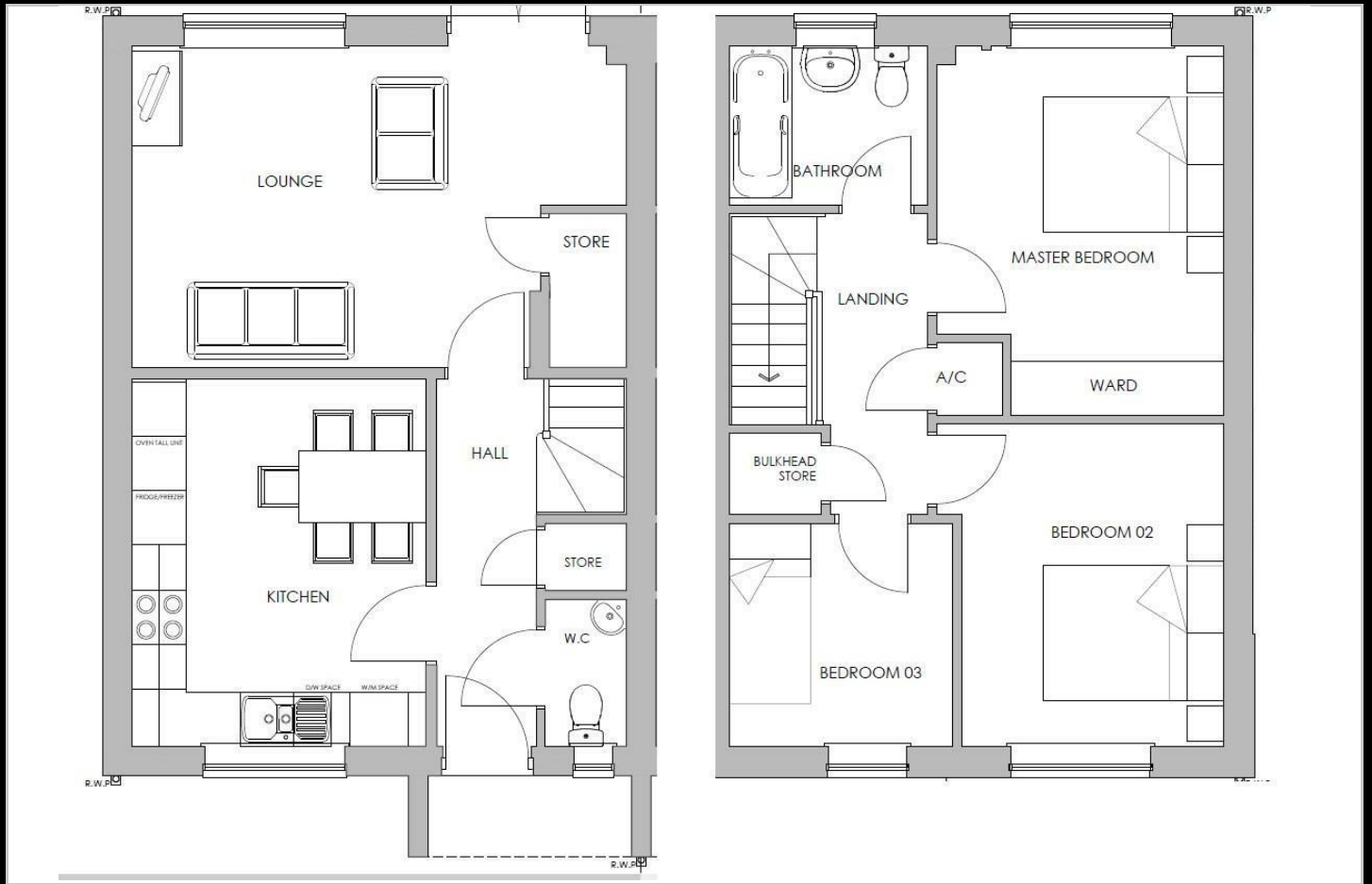
READY TO OCCUPY

All images/photographs are for illustrative purposes only

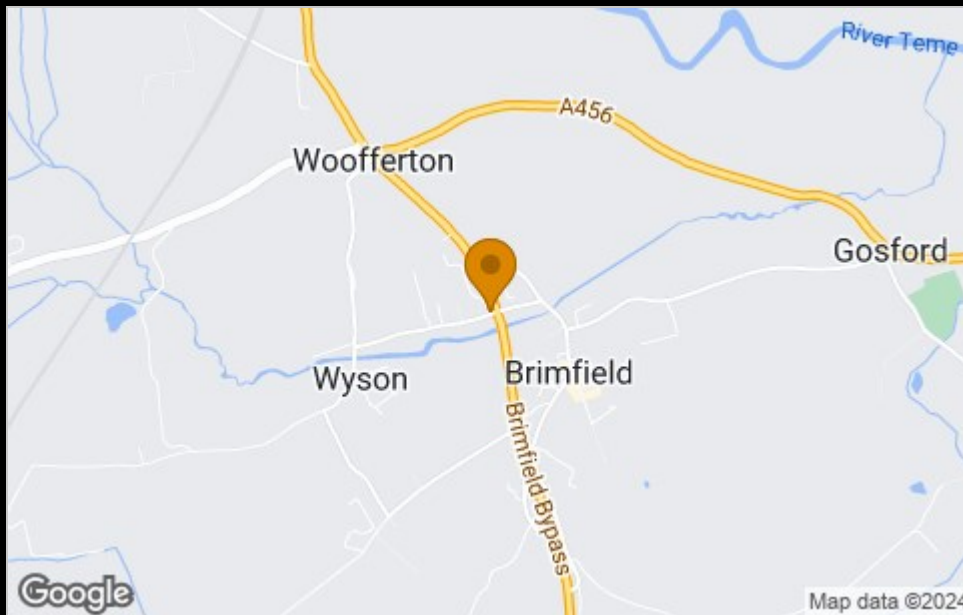
- End Terrace
- Fitted kitchen with oven hob & extractor
- near Ludlow
- Turf to rear garden
- UPVc double glazing
- New Build
- Vinyl flooring to wet areas
- Downstairs cloakroom
- 2 parking spaces



Floor Plan



Area Map



Viewing

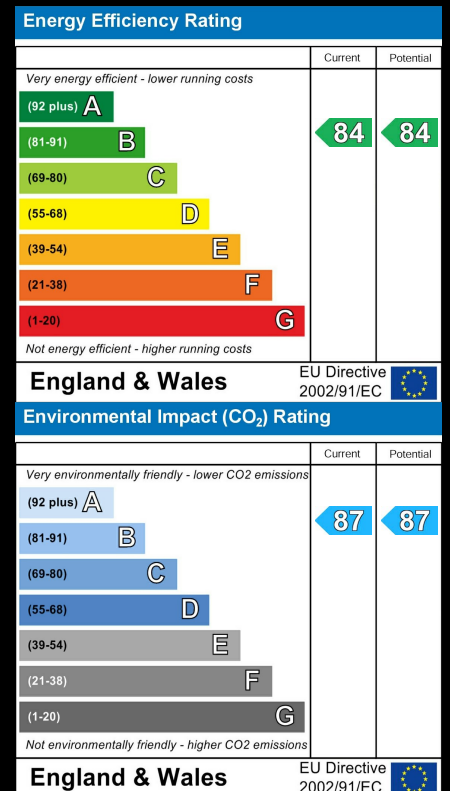
Please contact our Sales Advisor Kellie on 07807 787747 if you wish to arrange a viewing appointment for this property or require further information.

These particulars, whilst believed to be accurate are set out as a general outline only for guidance and do not constitute any part of an offer or contract. Intending purchasers should not rely on them as statements of representation of fact, but must satisfy themselves by inspection or otherwise as to their accuracy. No person in this firm's employment has the authority to make or give any representation or warranty in respect of the property.

4040 Lakeside, Solihull, West Midlands, B37 7YN

Email: sales@citizenhousing.org.uk or visit www.citizenhousing.org.uk

Energy Efficiency Graph





CITIZEN



Plot 8 - The Coppice Ph2 - 40% Share

8 Kop Close, Brimfield, SY8 4FB

5% deposit paid £96,600



Plot 8 - The Coppice Ph2 - 40% Share



Description

Plot 8 The Coppice Ph2 - 40% share £96,600 purchase price Total Rent £388.92 pcm

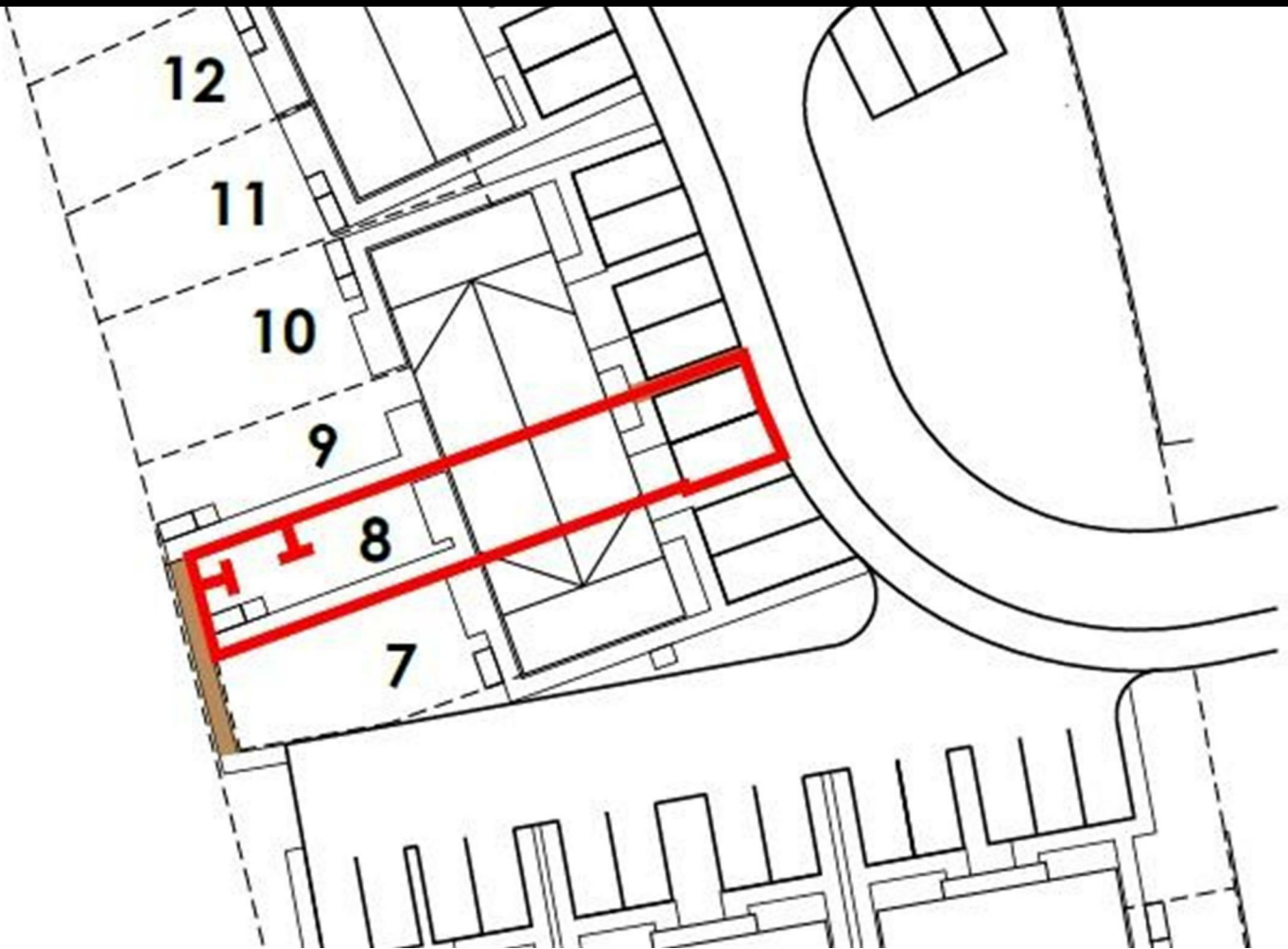
Please note there is an 80% staircasing restriction on these homes.

If you would like to apply for this property, please complete our online application form via our Signature Website

AVAILABLE TO OCCUPY

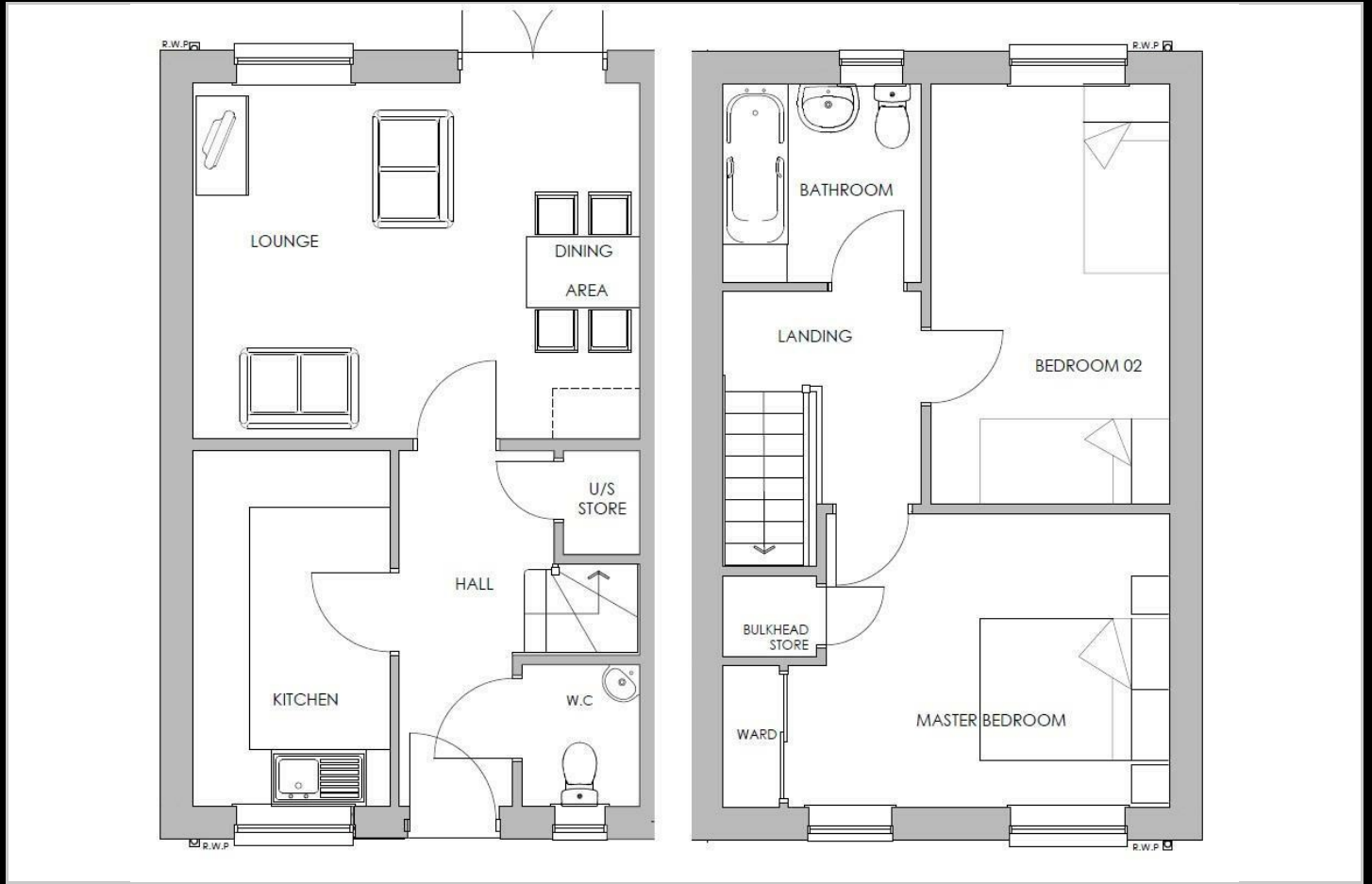
All images/photographs are for illustrative purposes only

- End Terrace
- Fitted kitchen with oven hob & extractor
- near Ludlow
- Turf to rear garden
- UPVc double glazing
- New Build
- Vinyl flooring to wet areas
- Downstairs cloakroom
- 2 parking spaces

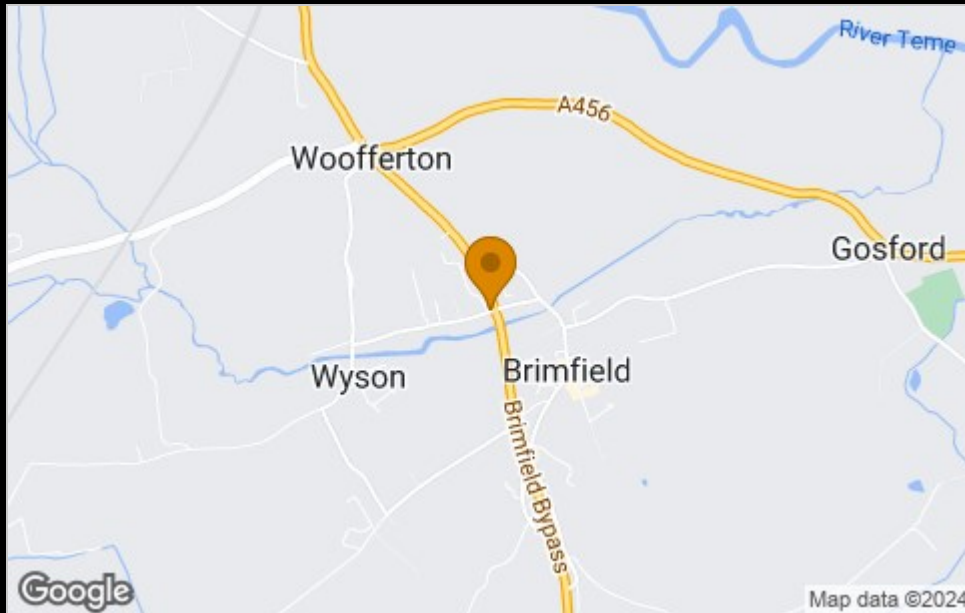




Floor Plan



Area Map



Viewing

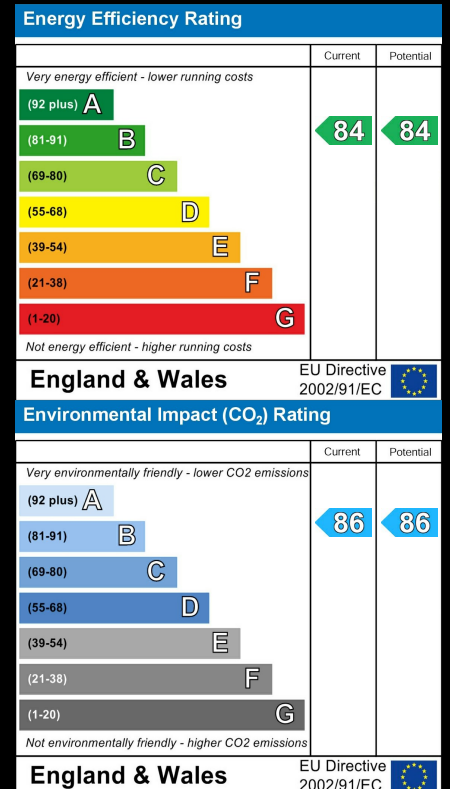
Please contact our Sales Advisor Kellie on 07807 787747 if you wish to arrange a viewing appointment for this property or require further information.

These particulars, whilst believed to be accurate are set out as a general outline only for guidance and do not constitute any part of an offer or contract. Intending purchasers should not rely on them as statements of representation of fact, but must satisfy themselves by inspection or otherwise as to their accuracy. No person in this firm's employment has the authority to make or give any representation or warranty in respect of the property.

4040 Lakeside, Solihull, West Midlands, B37 7YN

Email: sales@citizenhousing.org.uk or visit www.citizenhousing.org.uk

Energy Efficiency Graph





CITIZEN



Plot 9 - The Coppice Ph2 - 40% Share

9 Kop Close, Brimfield, SY8 4FB

5% deposit paid £96,600



Plot 9 - The Coppice Ph2 - 40% Share



Description

Plot 9 The Coppice Ph2 - 40% share £96,600 purchase price Total Rent £388.92 pcm

Please note there is an 80% staircasing restriction on these homes.

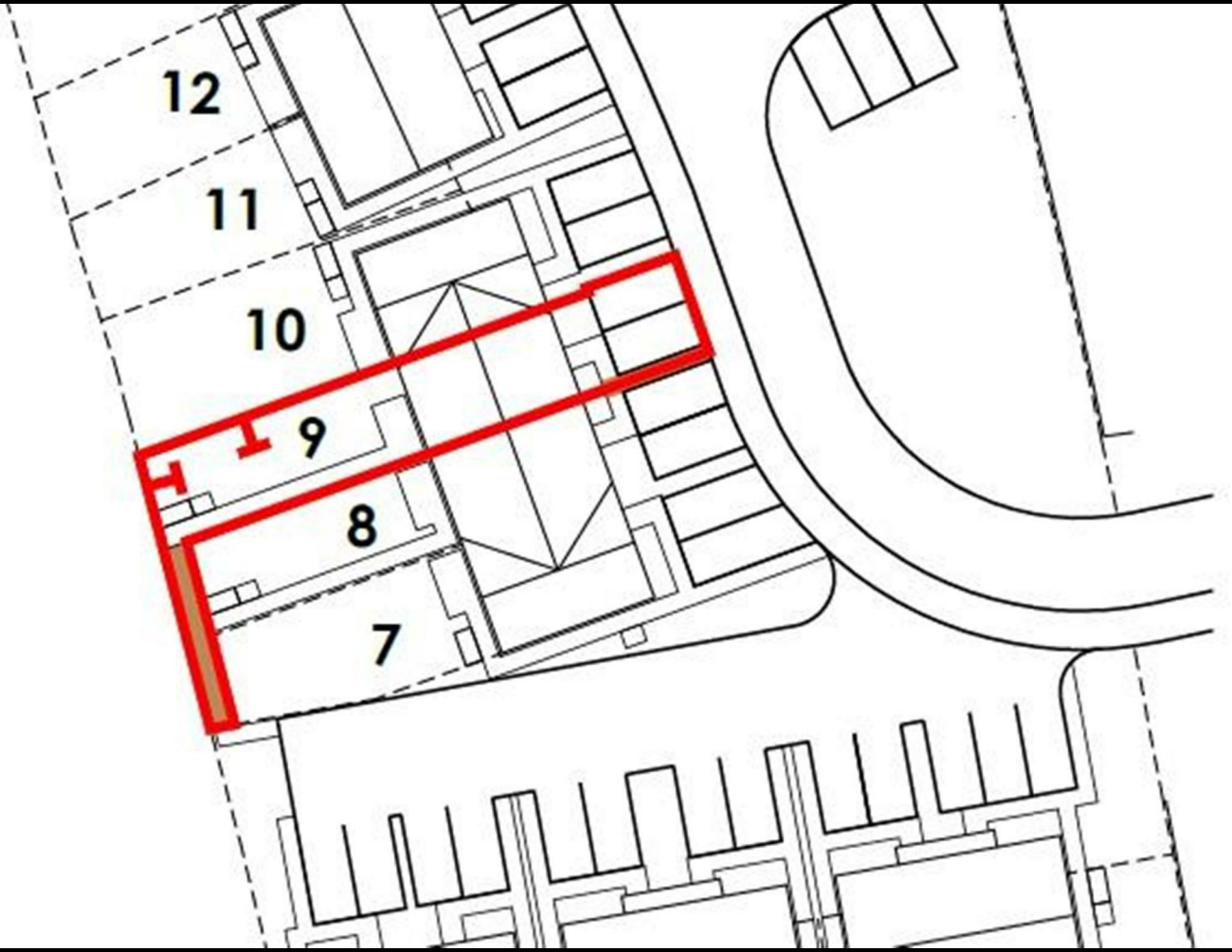
If you would like to apply for this property, please complete our online application form via our Signature Website

AVAILABLE TO OCCUPY

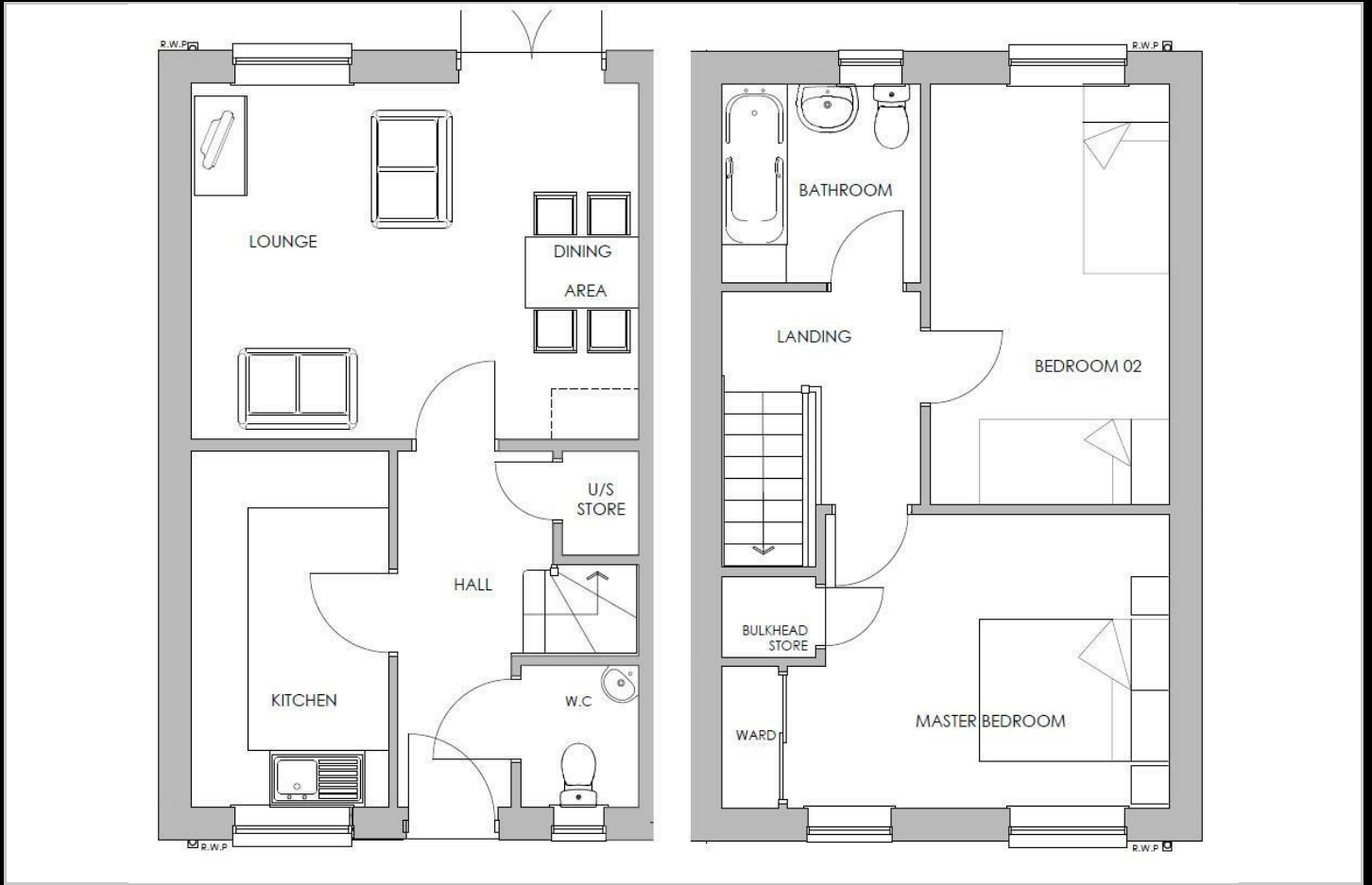
All images/photographs are for illustrative purposes only

- End Terrace
- Fitted kitchen with oven hob & extractor
- near Ludlow
- Turf to rear garden
- UPVc double glazing
- New Build
- Vinyl flooring to wet areas
- Downstairs cloakroom
- 2 parking spaces

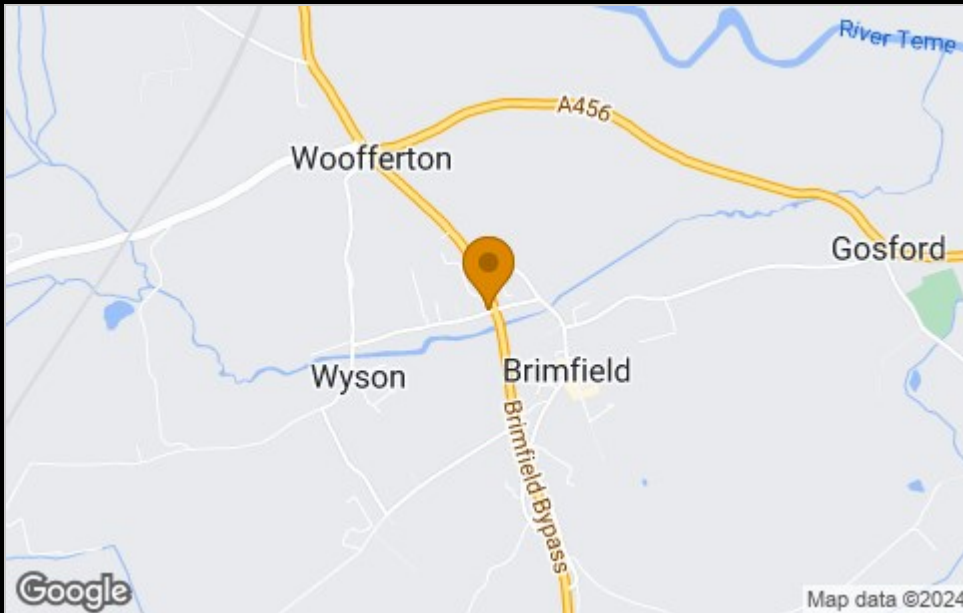




Floor Plan



Area Map



Viewing

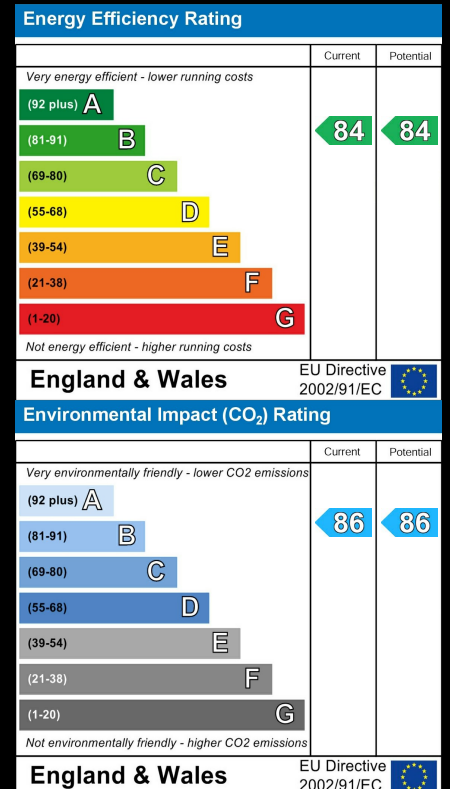
Please contact our Sales Advisor Kellie on 07807 787747 if you wish to arrange a viewing appointment for this property or require further information.

These particulars, whilst believed to be accurate are set out as a general outline only for guidance and do not constitute any part of an offer or contract. Intending purchasers should not rely on them as statements of representation of fact, but must satisfy themselves by inspection or otherwise as to their accuracy. No person in this firm's employment has the authority to make or give any representation or warranty in respect of the property.

4040 Lakeside, Solihull, West Midlands, B37 7YN

Email: sales@citizenhousing.org.uk or visit www.citizenhousing.org.uk

Energy Efficiency Graph





CITIZEN



Plot 10 The Coppice Ph2 - 35% Share

10 Kop Close, Brimfield, SY8 4FB

5% deposit paid £93,240



Plot 10 The Coppice Ph2 - 35% Share



Description

Plot 10 The Coppice Ph2 - 35% share £93,240 purchase price Total Rent £455.44 pcm

Please note there is an 80% staircasing restriction on these homes.

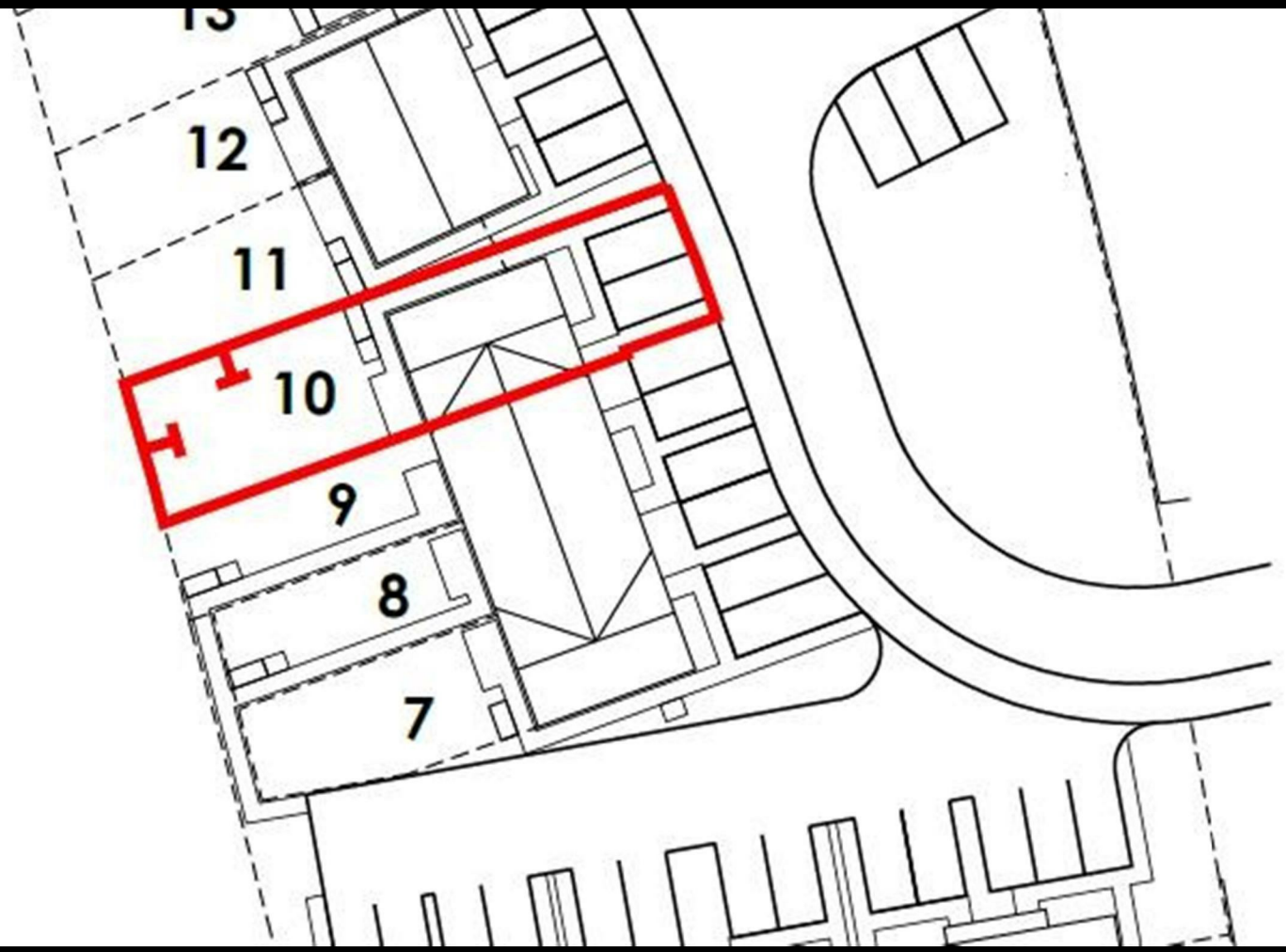
If you would like to apply for this property, please complete our online application form via our Signature Website

READY TO OCCUPY

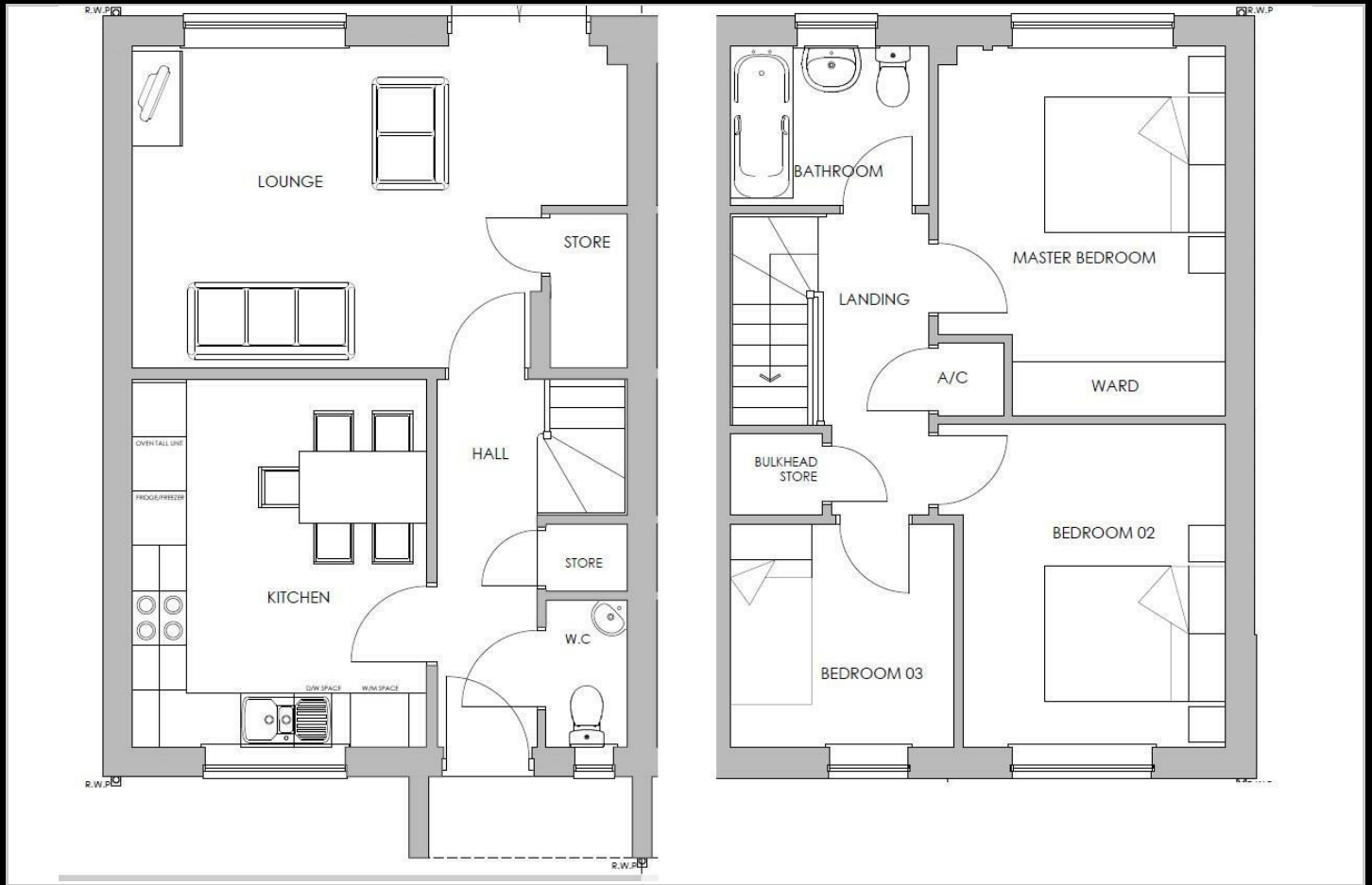
All images/photographs are for illustrative purposes only

- End Terrace
- Fitted kitchen with oven hob & extractor
- near Ludlow
- Turf to rear garden
- UPVc double glazing
- New Build
- Vinyl flooring to wet areas
- Downstairs cloakroom
- 2 parking spaces

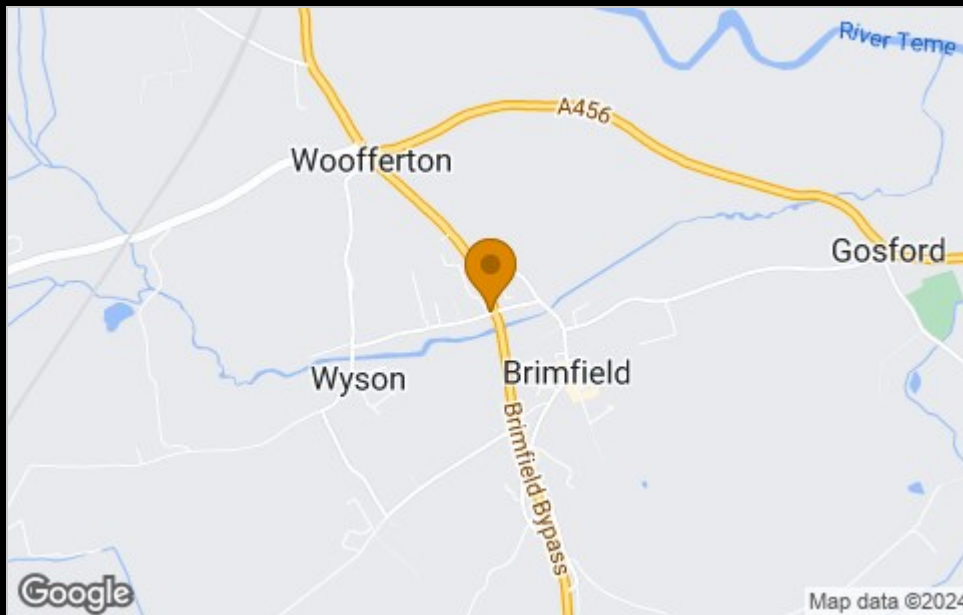




Floor Plan



Area Map



Viewing

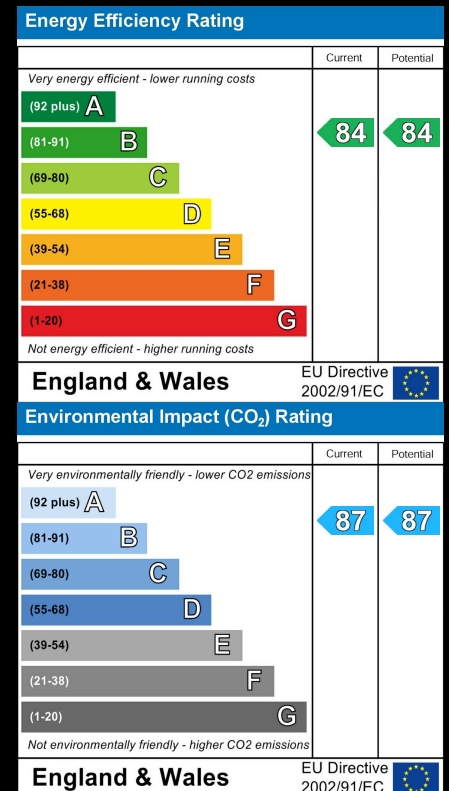
Please contact our Sales Advisor Kellie on 07807 787747 if you wish to arrange a viewing appointment for this property or require further information.

These particulars, whilst believed to be accurate are set out as a general outline only for guidance and do not constitute any part of an offer or contract. Intending purchasers should not rely on them as statements of representation of fact, but must satisfy themselves by inspection or otherwise as to their accuracy. No person in this firm's employment has the authority to make or give any representation or warranty in respect of the property.

4040 Lakeside, Solihull, West Midlands, B37 7YN

Email: sales@citizenhousing.org.uk or visit www.citizenhousing.org.uk

Energy Efficiency Graph





CITIZEN



Plot 12 - The Coppice Ph2 - 40% Share

12 Kop Close, Wyson Lane, Brimfield, SY8 4FB

40% Shared ownership £98,000



Plot 12 - The Coppice Ph2 - 40% Share



Description

Plot 12 The Coppice Ph2 40% Share Purchase price £98,000

Total Rent £393.73 pcm

Please note there is an 80% staircasing restriction on these homes.

If you would like to apply for this property, please complete our online application form via our Signature Website

AVAILABLE TO OCCUPY

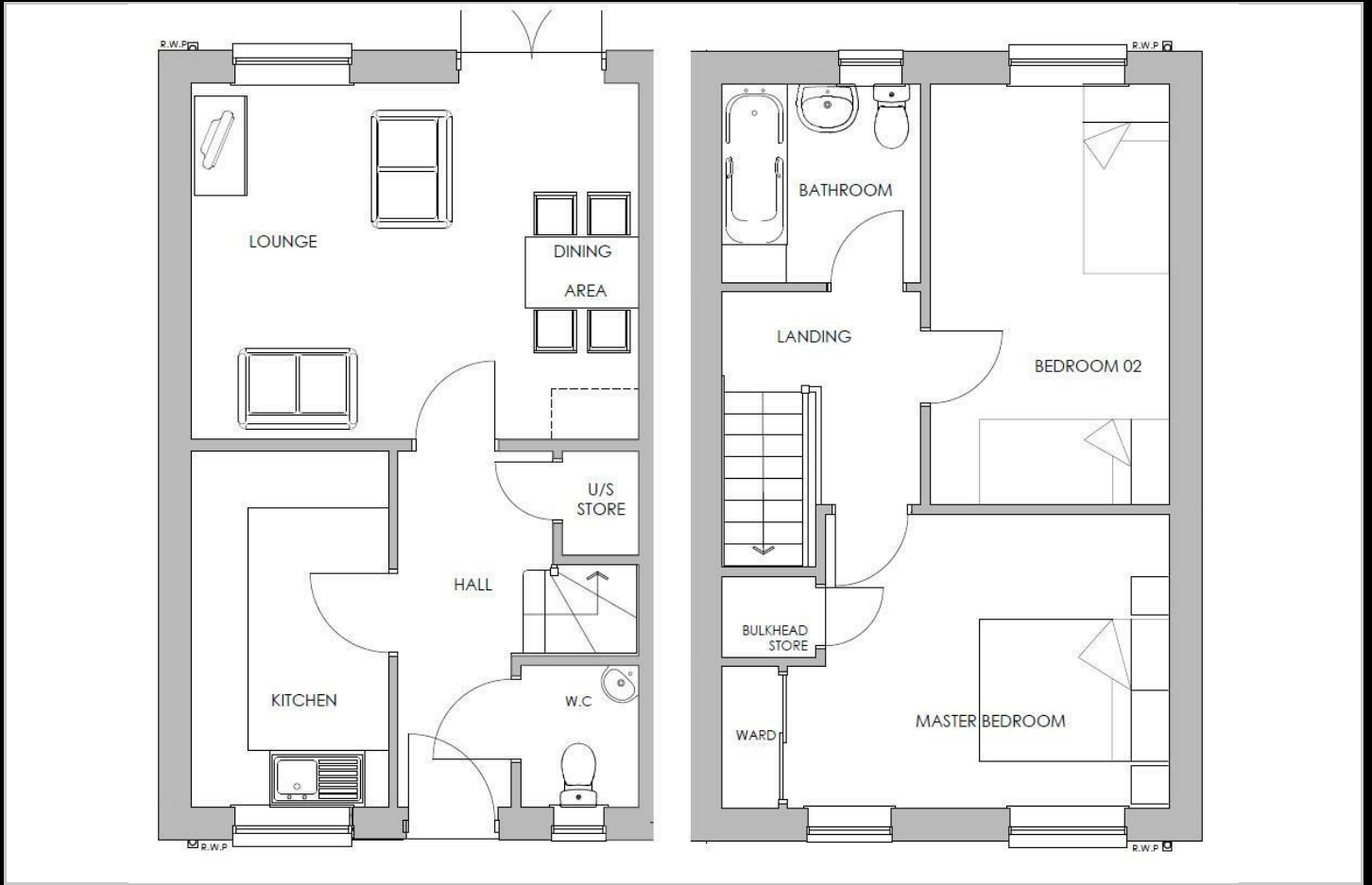
All images/photographs are for illustrative purposes only

- New build
- 2 parking spaces
- Fitted kitchen with oven, hob & extractor
- 2 spacious bedrooms
- Semi detached
- Turf to rear garden
- Vinyl to wet areas
- UPVC double glazing
- Downstairs cloakroom
- Near Ludlow

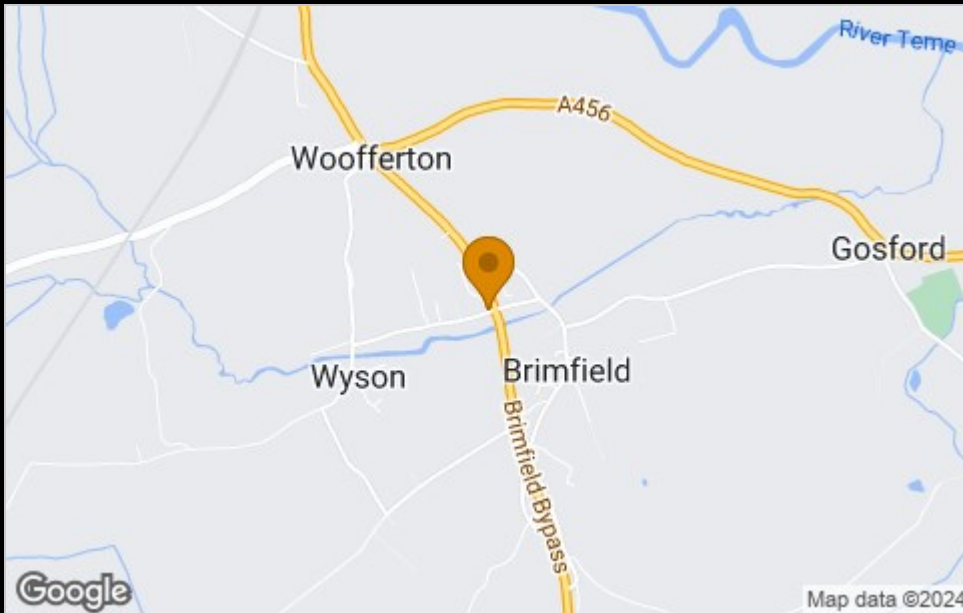




Floor Plan



Area Map



Viewing

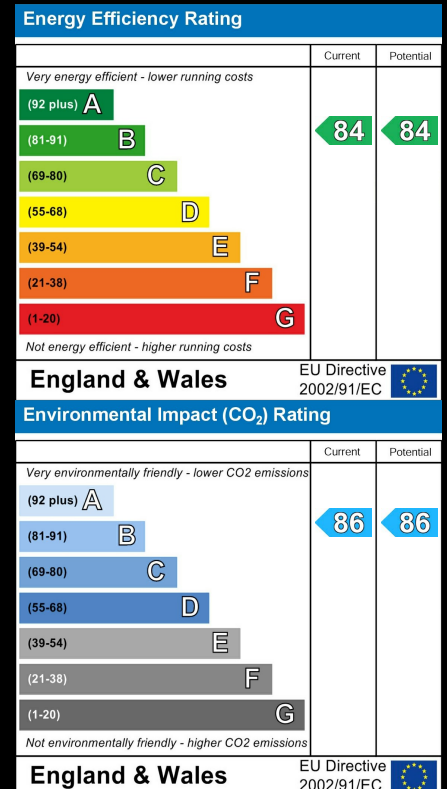
Please contact our Sales Advisor Kellie on 07807 787747 if you wish to arrange a viewing appointment for this property or require further information.

These particulars, whilst believed to be accurate are set out as a general outline only for guidance and do not constitute any part of an offer or contract. Intending purchasers should not rely on them as statements of representation of fact, but must satisfy themselves by inspection or otherwise as to their accuracy. No person in this firm's employment has the authority to make or give any representation or warranty in respect of the property.

4040 Lakeside, Solihull, West Midlands, B37 7YN

Email: sales@citizenhousing.org.uk or visit www.citizenhousing.org.uk

Energy Efficiency Graph





CITIZEN



Plot 13 - The Coppice Ph2 - 35% Share

14 Kop Close, Brimfield, SY8 4FB

5% deposit paid £94,465



Plot 13 - The Coppice Ph2 - 35% Share



Description

Plot 13 The Coppice Ph2 - 35% share £94,465 purchase price Total Rent £460.65 pcm

Please note there is an 80% staircasing restriction on these homes.

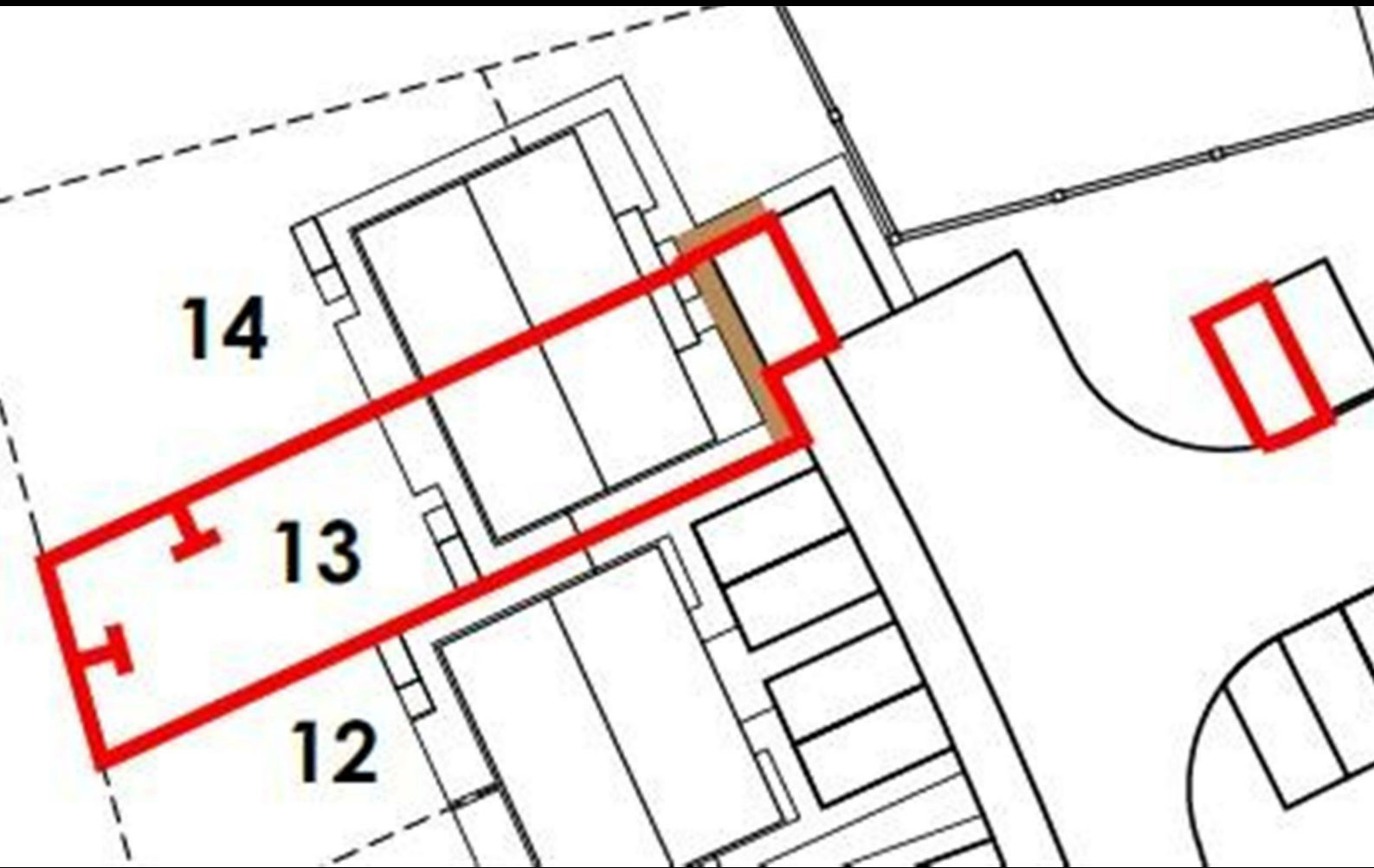
If you would like to apply for this property, please complete our online application form via our Signature Website

READY TO OCCUPY

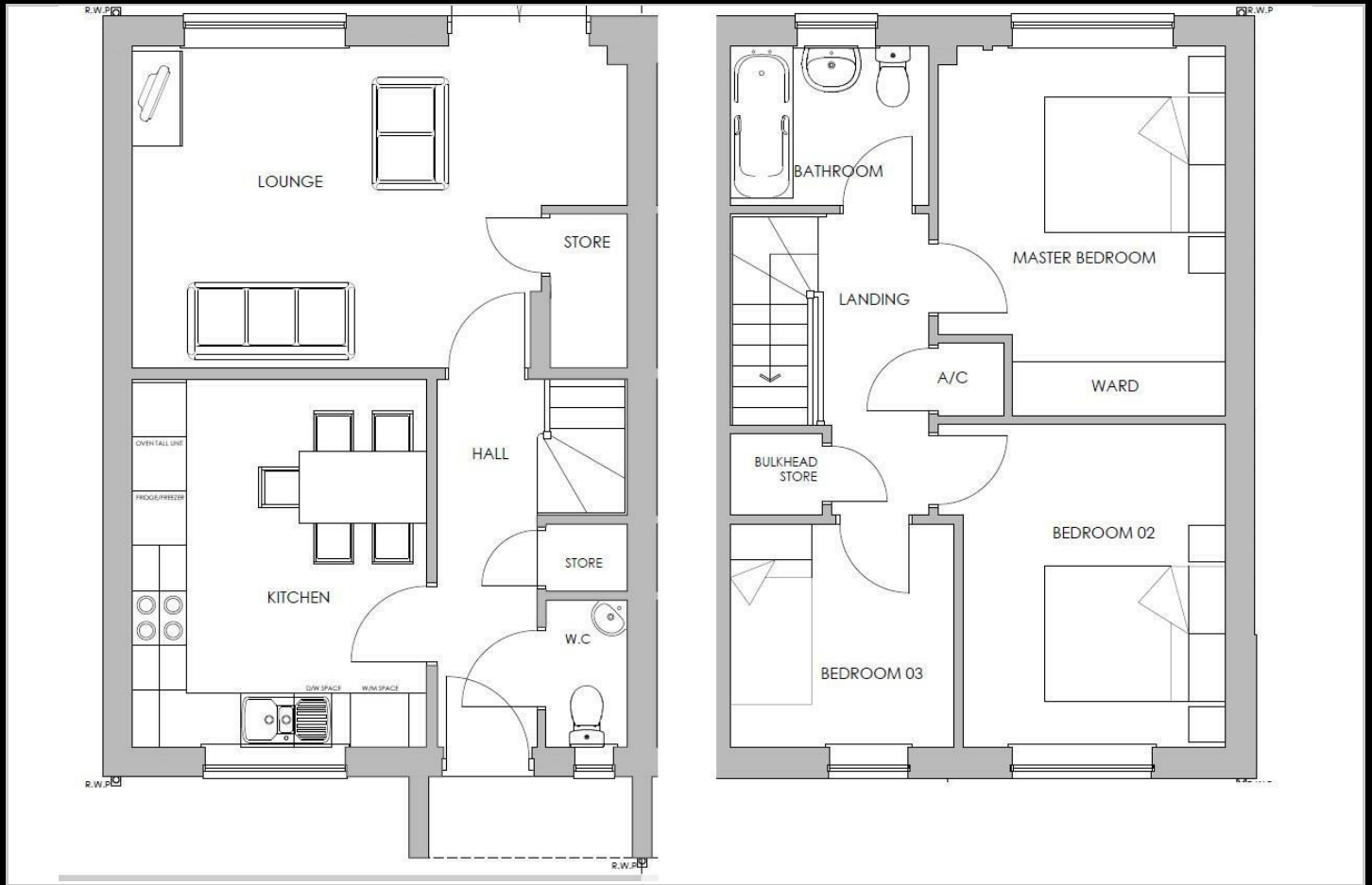
All images/photographs are for illustrative purposes only

- Semi Detached
- Fitted kitchen with oven hob & extractor
- near Ludlow
- Turf to rear garden
- UPVc double glazing
- New Build
- Vinyl flooring to wet areas
- Downstairs cloakroom
- 2 parking spaces

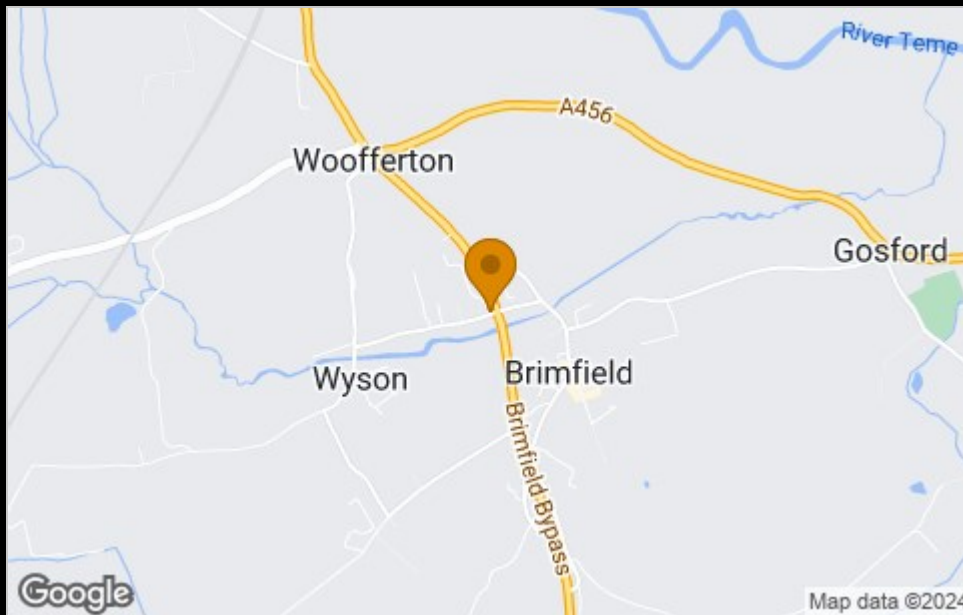




Floor Plan



Area Map



Viewing

Please contact our Sales Advisor Kellie on 07807 787747 if you wish to arrange a viewing appointment for this property or require further information.

These particulars, whilst believed to be accurate are set out as a general outline only for guidance and do not constitute any part of an offer or contract. Intending purchasers should not rely on them as statements of representation of fact, but must satisfy themselves by inspection or otherwise as to their accuracy. No person in this firm's employment has the authority to make or give any representation or warranty in respect of the property.

4040 Lakeside, Solihull, West Midlands, B37 7YN

Email: sales@citizenhousing.org.uk or visit www.citizenhousing.org.uk

Energy Efficiency Graph

