



CITIZEN



## Plot 13 Meadow Gardens - 40% share

13 Willow Close, Atherstone, CV9 2DY

**40% Shared ownership £94,500**



# Plot 13 Meadow Gardens - 40% share



## Description

Plot 14 Meadow Gardens Purchase Price £94,500 40% Share  
Total Rent £358.21 pcm

Ready to occupy January/February 2025 - AVAILABLE TO RESERVE NOW

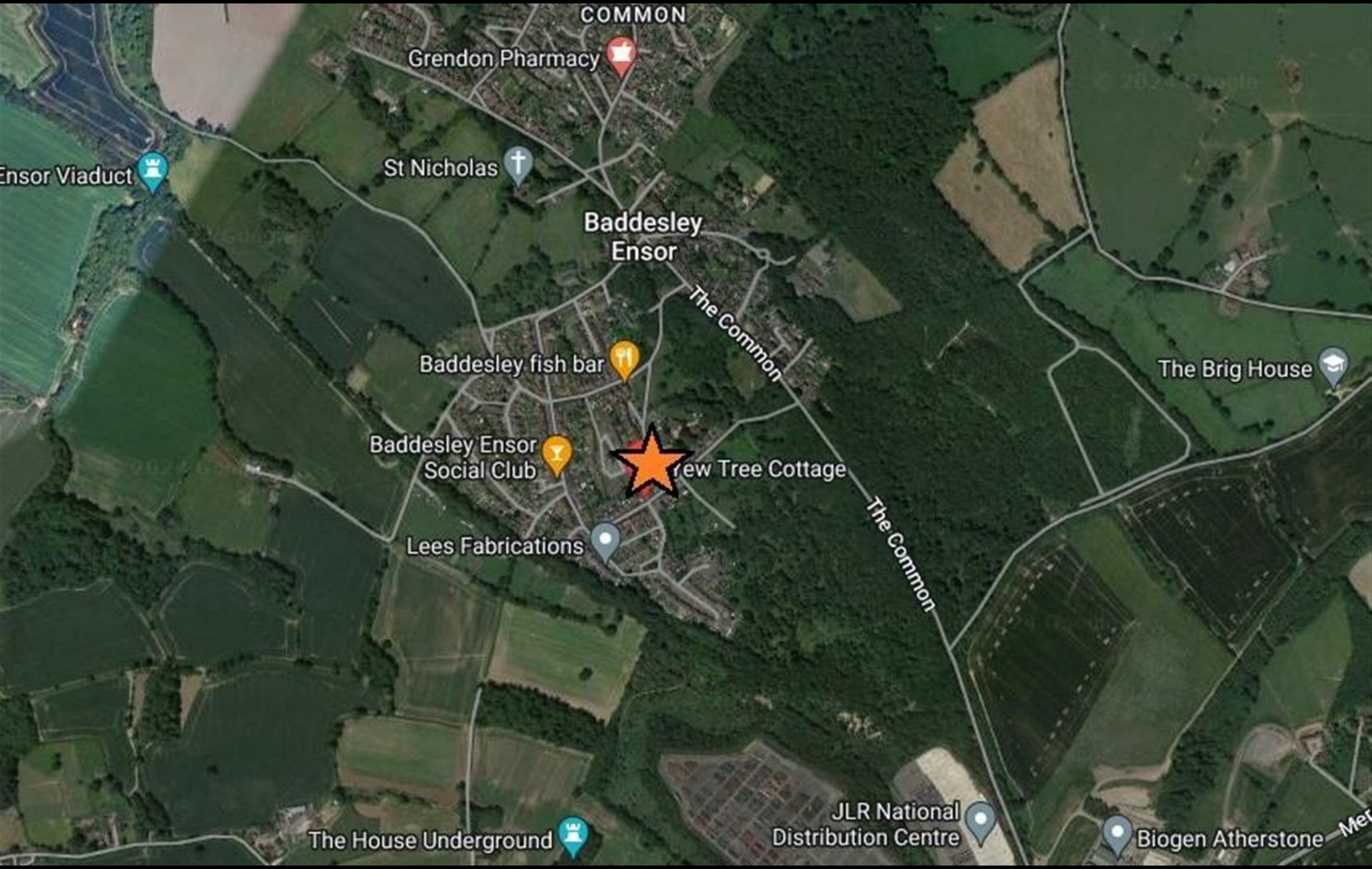
Please note there is a staircasing restriction on this home of a maximum ownership percentage of 80%

If you would like to apply for this property, please complete our online application form via our Signature Website

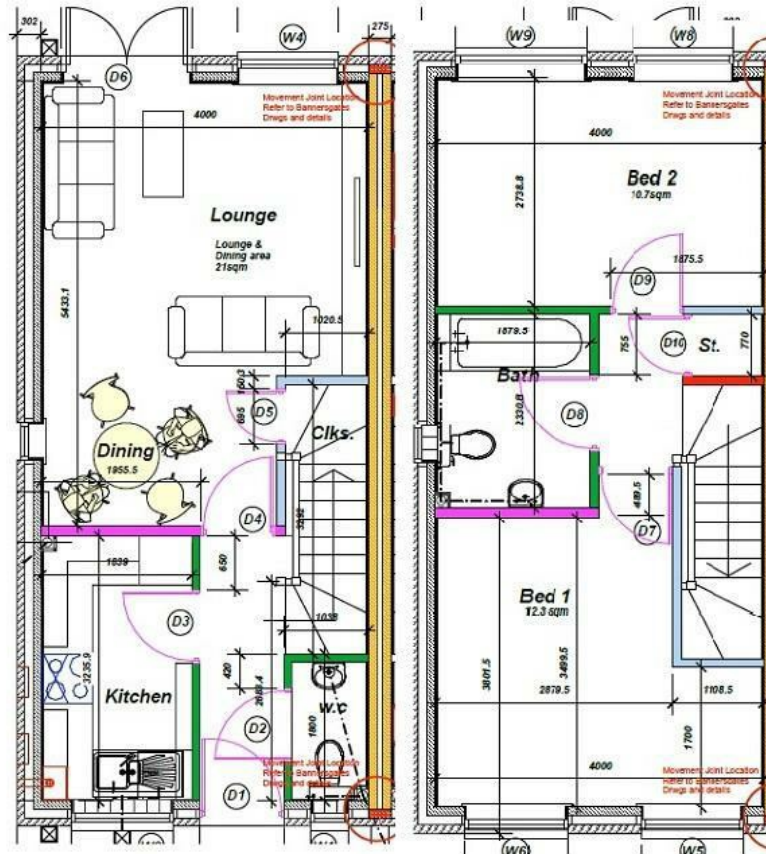
All images/photographs are for illustrative purposes only

- New Build
- 2 Parking spaces
- Fitted kitchen with oven, hob & extractor
- 2 spacious bedrooms
- uPVC windows
- Semi Detached
- Vinyl flooring to wet areas
- Turf to rear garden
- Downstairs cloakroom
- Near Atherstone





## Floor Plan



## Area Map



## Viewing

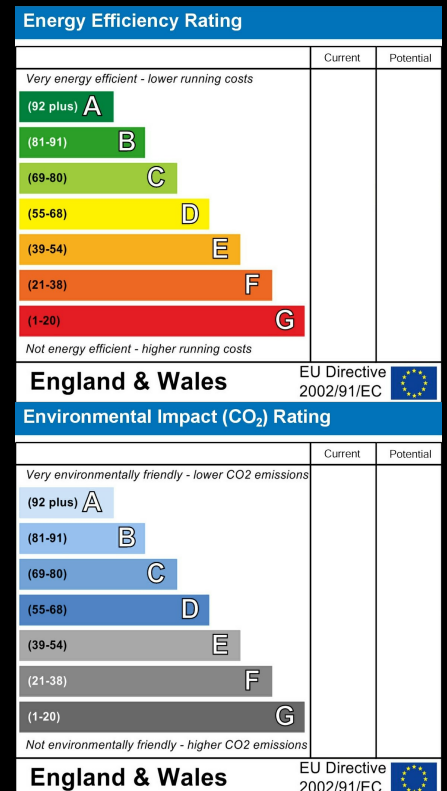
Please contact our Sales Advisor Kellie on 07807 787747 if you wish to arrange a viewing appointment for this property or require further information.

These particulars, whilst believed to be accurate are set out as a general outline only for guidance and do not constitute any part of an offer or contract. Intending purchasers should not rely on them as statements of representation of fact, but must satisfy themselves by inspection or otherwise as to their accuracy. No person in this firm's employment has the authority to make or give any representation or warranty in respect of the property.

4040 Lakeside, Solihull, West Midlands, B37 7YN

Email: [sales@citizenhousing.org.uk](mailto:sales@citizenhousing.org.uk) or visit [www.citizenhousing.org.uk](http://www.citizenhousing.org.uk)

## Energy Efficiency Graph





CITIZEN



## Plot 14 Meadow Gardens - 40% share

14 Willow Close, Atherstone, CV9 2DY

**40% Shared ownership £94,500**



# Plot 14 Meadow Gardens - 40% share



## Description

Plot 14 Meadow Gardens Purchase Price £94,500 40% Share  
Total Rent £358.21 pcm

Ready to occupy January/February 2025 - AVAILABLE TO RESERVE NOW

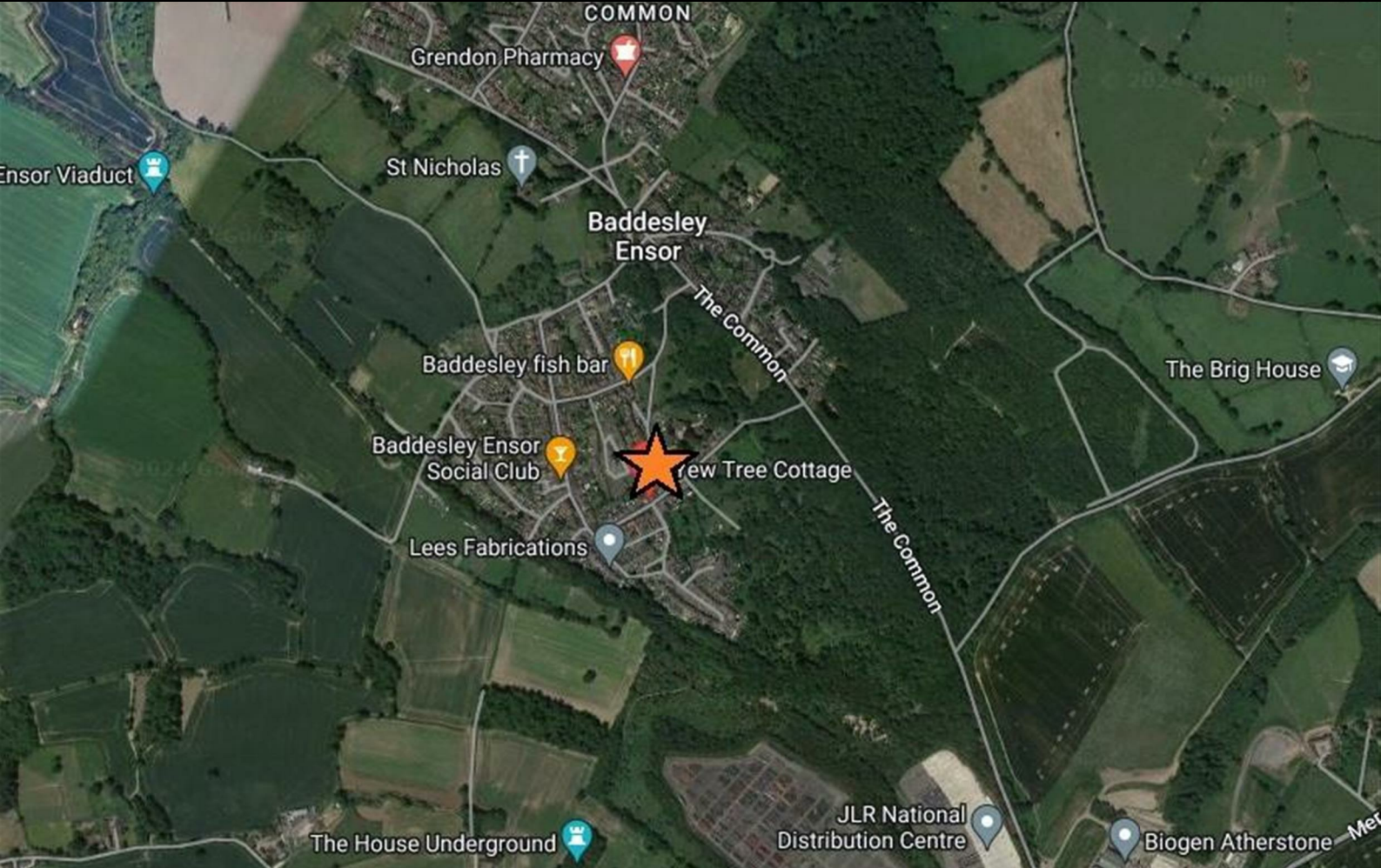
Please note there is a staircasing restriction on this home of a maximum ownership percentage of 80%

If you would like to apply for this property, please complete our online application form via our Signature Website

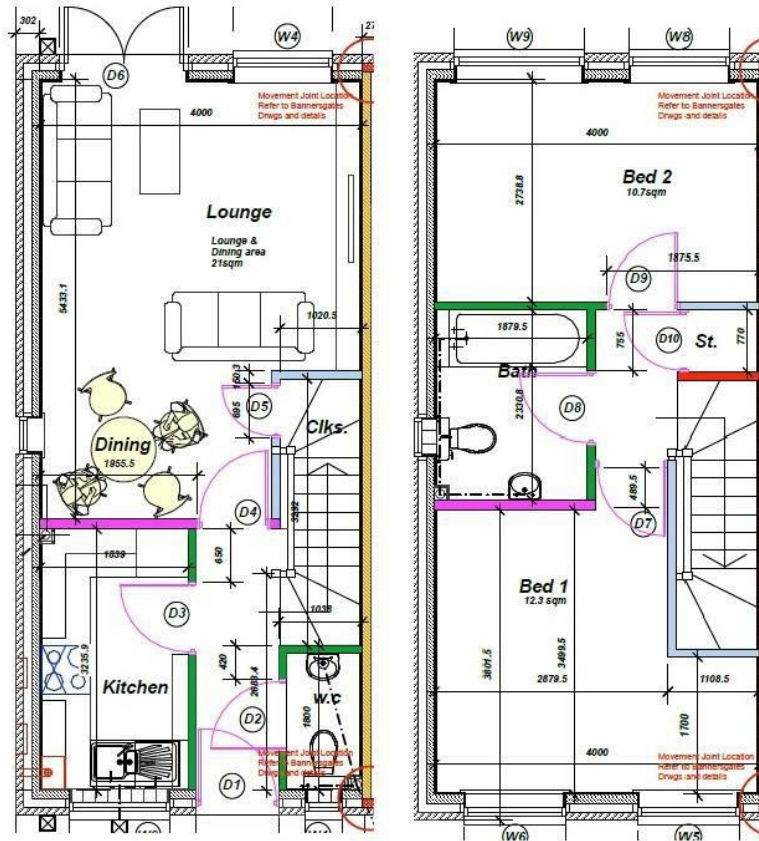
All images/photographs are for illustrative purposes only

- New Build
- 2 Parking spaces
- Fitted kitchen with oven, hob & extractor
- 2 spacious bedrooms
- uPVC windows
- Semi Detached
- Vinyl flooring to wet areas
- Turf to rear garden
- Downstairs cloakroom
- Near Atherstone

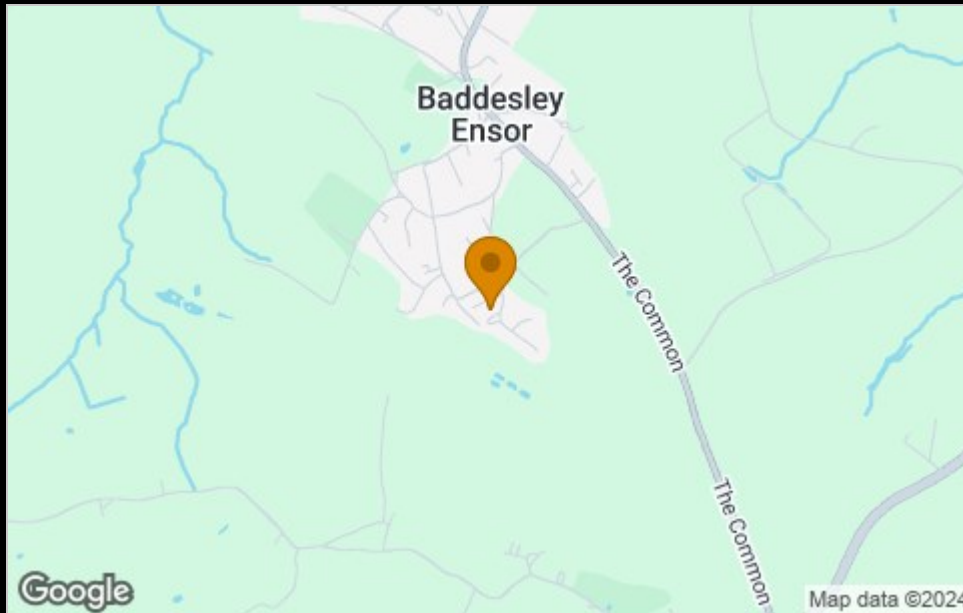




## Floor Plan



## Area Map



## Viewing

Please contact our Sales Advisor Kellie on 07807 787747 if you wish to arrange a viewing appointment for this property or require further information.

## Energy Efficiency Graph

Energy Efficiency Rating		Current	Potential
Very energy efficient - lower running costs			
(92 plus) <b>A</b>			
(81-91) <b>B</b>			
(69-80) <b>C</b>			
(55-68) <b>D</b>			
(39-54) <b>E</b>			
(21-38) <b>F</b>			
(1-20) <b>G</b>			
Not energy efficient - higher running costs			
<b>England &amp; Wales</b>		EU Directive 2002/91/EC	
Environmental Impact (CO <sub>2</sub> ) Rating		Current	Potential
Very environmentally friendly - lower CO <sub>2</sub> emissions			
(92 plus) <b>A</b>			
(81-91) <b>B</b>			
(69-80) <b>C</b>			
(55-68) <b>D</b>			
(39-54) <b>E</b>			
(21-38) <b>F</b>			
(1-20) <b>G</b>			
Not environmentally friendly - higher CO <sub>2</sub> emissions			
<b>England &amp; Wales</b>		EU Directive 2002/91/EC	

These particulars, whilst believed to be accurate are set out as a general outline only for guidance and do not constitute any part of an offer or contract. Intending purchasers should not rely on them as statements of representation of fact, but must satisfy themselves by inspection or otherwise as to their accuracy. No person in this firm's employment has the authority to make or give any representation or warranty in respect of the property.

4040 Lakeside, Solihull, West Midlands, B37 7YN

Email: [sales@citizenhousing.org.uk](mailto:sales@citizenhousing.org.uk) or visit [www.citizenhousing.org.uk](http://www.citizenhousing.org.uk)