



CITIZEN



Plot 46 Willow Grove "Type E" - 35% Share

26 Platinum Way, Pickford Green, Coventry, CV5 9QR

Price £111,475



Plot 46 Willow Grove "Type E" - 35% Share



Description

35% share available at £111,475 ready to occupy Dec 24/Jan 25

If you would like to apply for this property, please complete our online application form via our Signature Website

* Images are for illustration purposes only

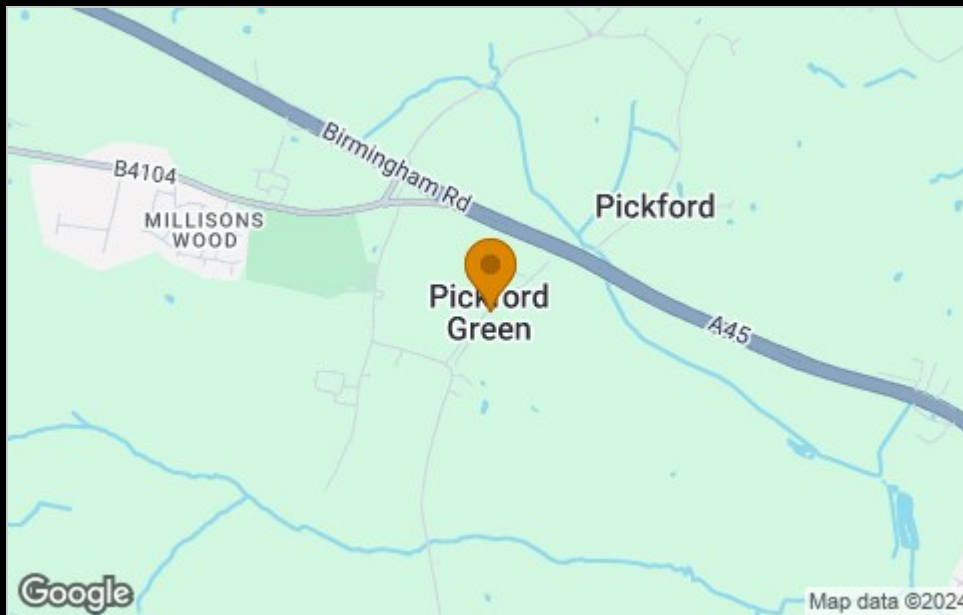
- Semi Detached
- Vinyl flooring to wet areas
- Two parking spaces
- New build
- Good transport links
- Downstairs cloakroom
- Oven hob & extractor included
- Turf to rear garden
- near Coventry
- Three bedrooms



Floor Plan



Area Map



Viewing

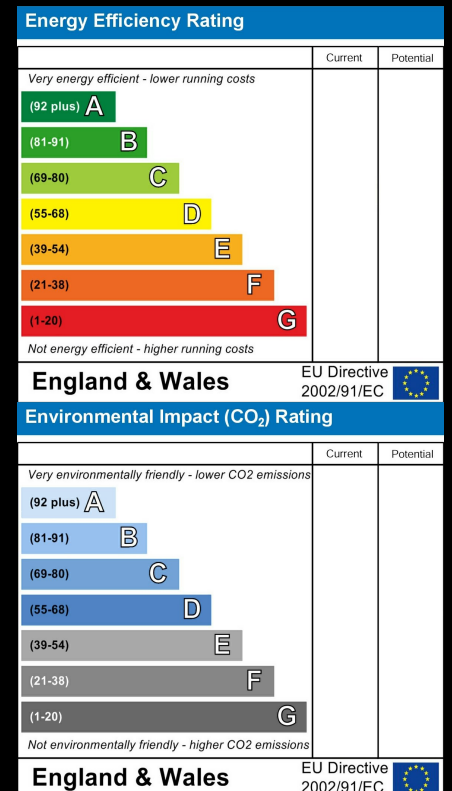
Please contact our Citizen-Pippinfields, Allesley Office on 07736792306 if you wish to arrange a viewing appointment for this property

These particulars, whilst believed to be accurate are set out as a general outline only for guidance and do not constitute any part of an offer or contract. Intending purchasers should not rely on them as statements of representation of fact, but must satisfy themselves by inspection or otherwise as to their accuracy. No person in this firms employment has the authority to make or give any representation or warranty in respect of the property.

4040 Lakeside, Solihull, West Midlands, B37 7YN

Email: sales@citizenhousing.org.uk or visit www.citizenhousing.org.uk

Energy Efficiency Graph





CITIZEN



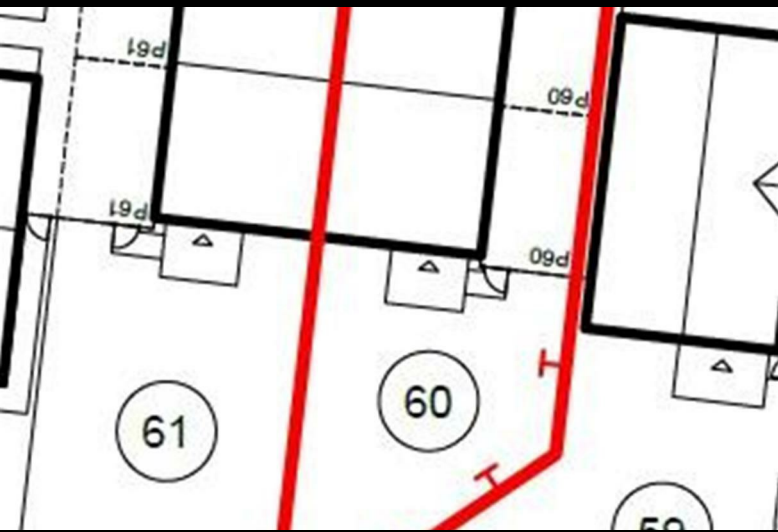
Plot 60 Willow Grove "Type E" - 35% Share

40 Platinum Way, Pickford Green, Coventry, CV5 9QR

35% Shared ownership £112,000



Plot 60 Willow Grove "Type E" - 35% Share



Description

Plot 60 - 35% share Purchase Price £112,000
Total Rent £513.82 pcm

Ready to Occupy

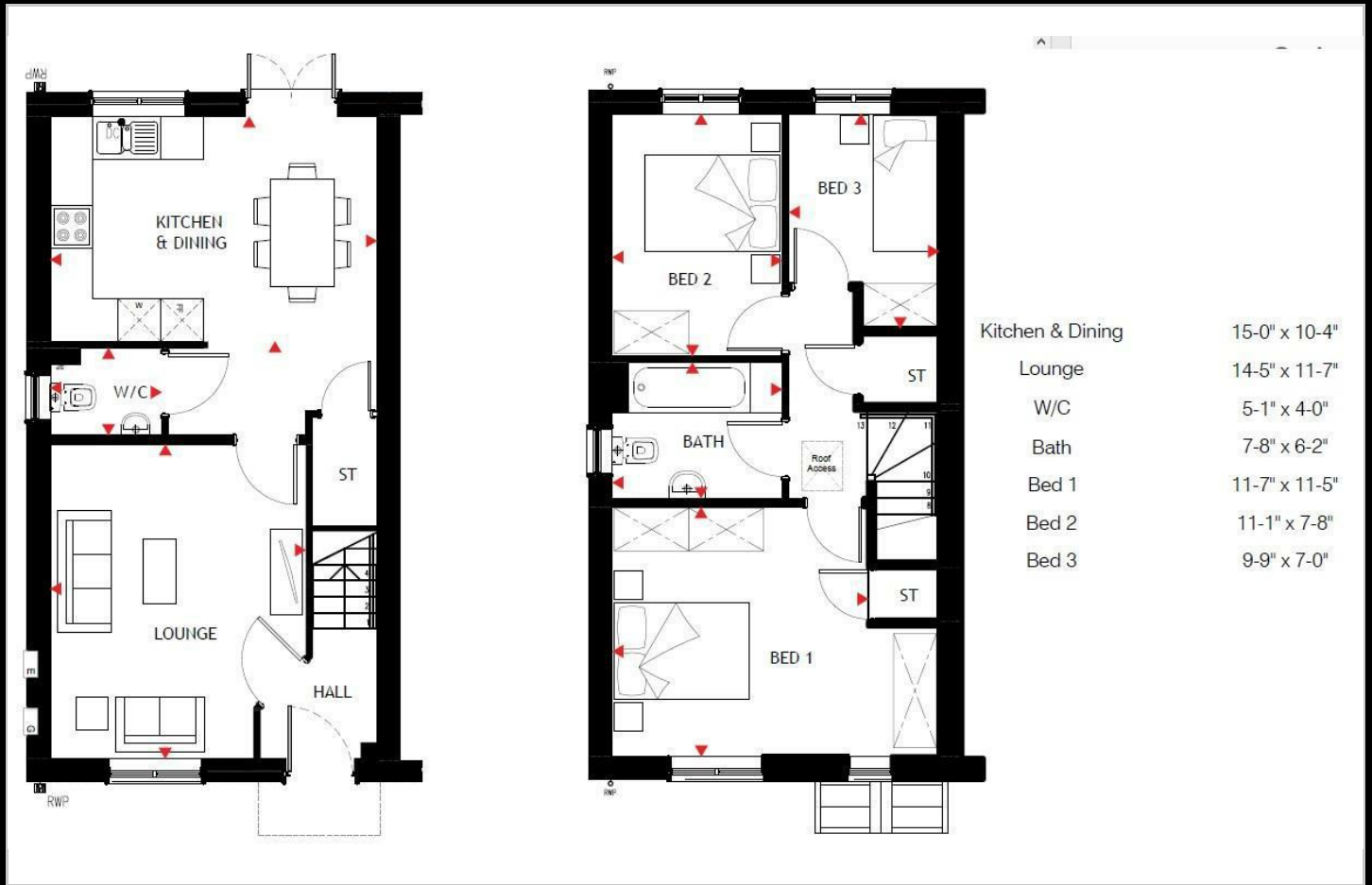
If you would like to apply for this property, please complete our online application form via our Signature Website

* Images are for illustration purposes only

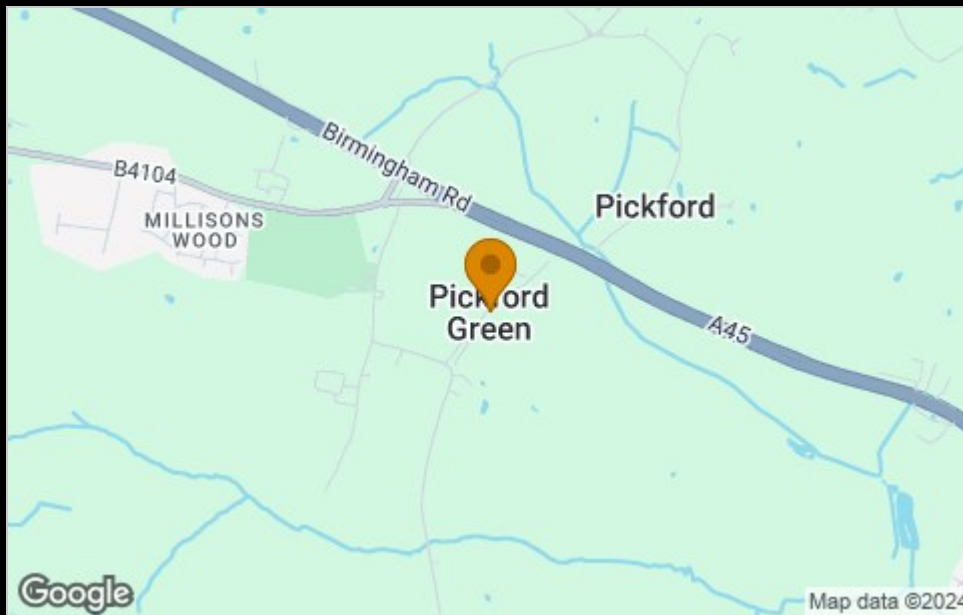
- Semi Detached
- Vinyl flooring to wet areas
- Two parking spaces
- New build
- Good transport links
- Downstairs cloakroom
- Oven hob & extractor included
- Turf to rear garden
- near Coventry
- Three bedrooms



Floor Plan



Area Map



Viewing

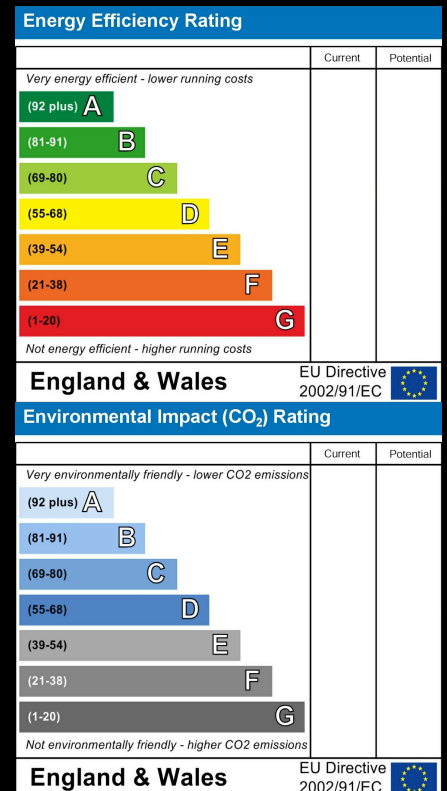
Please contact our Citizen-Pippinfields, Allesley Office on 07736792306 if you wish to arrange a viewing appointment for this property

These particulars, whilst believed to be accurate are set out as a general outline only for guidance and do not constitute any part of an offer or contract. Intending purchasers should not rely on them as statements of representation of fact, but must satisfy themselves by inspection or otherwise as to their accuracy. No person in this firms employment has the authority to make or give any representation or warranty in respect of the property.

4040 Lakeside, Solihull, West Midlands, B37 7YN

Email: sales@citizenhousing.org.uk or visit www.citizenhousing.org.uk

Energy Efficiency Graph





CITIZEN



Plot 66 Willow Grove "E" 35% Share

28 Platinum Way, Coventry, CV5 9QR

35% Shared ownership £112,000



Plot 66 Willow Grove "E" 35% Share



Description

35% share available at £112,000, ready to occupy Dec 24/Jan 25

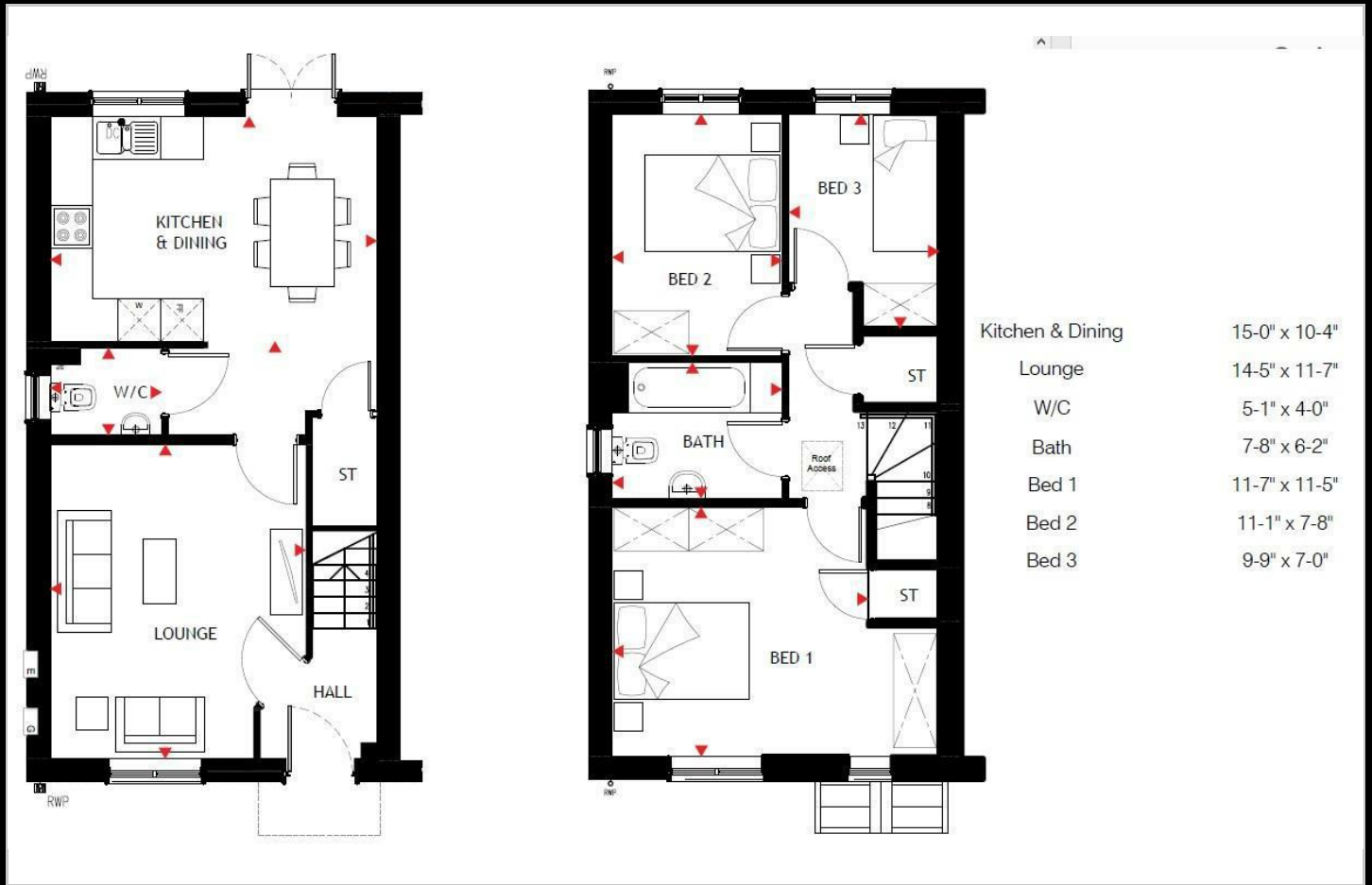
If you would like to apply for this property, please complete our online application form via our Signature Website

* Images are for illustration purposes only

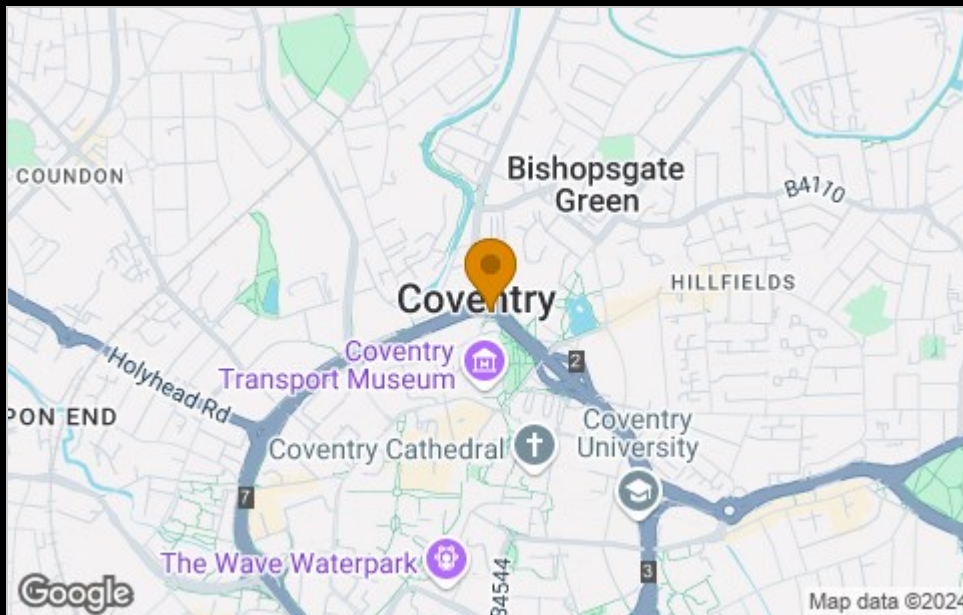
- Semi Detached
- Vinyl flooring to wet areas
- Two parking spaces
- New build
- Good transport links
- Downstairs cloakroom
- Oven hob & extractor included
- Turf to rear garden
- near Coventry
- Three bedrooms



Floor Plan



Area Map



Viewing

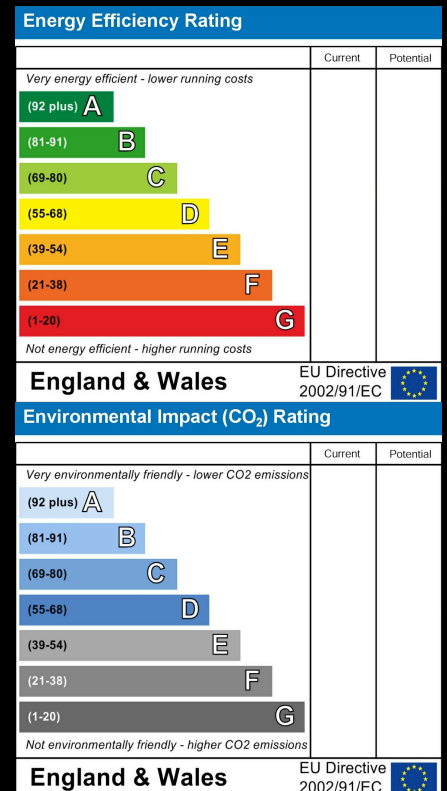
Please contact our Citizen-Pippinfields, Allesley Office on 07736792306 if you wish to arrange a viewing appointment for this property

These particulars, whilst believed to be accurate are set out as a general outline only for guidance and do not constitute any part of an offer or contract. Intending purchasers should not rely on them as statements of representation of fact, but must satisfy themselves by inspection or otherwise as to their accuracy. No person in this firm's employment has the authority to make or give any representation or warranty in respect of the property.

4040 Lakeside, Solihull, West Midlands, B37 7YN

Email: sales@citizenhousing.org.uk or visit www.citizenhousing.org.uk

Energy Efficiency Graph





CITIZEN



Plot 74 Willow Grove "Earlsdon E1" - 35% Share

15 Platinum Way, Pickford Green, Coventry, CV5 9QR

35% Shared ownership £110,250



Plot 74 Willow Grove "Earlsdon E1" - 35% Share



Description

35% share available at £110,250

Ready to Occupy Mar/Apr 25

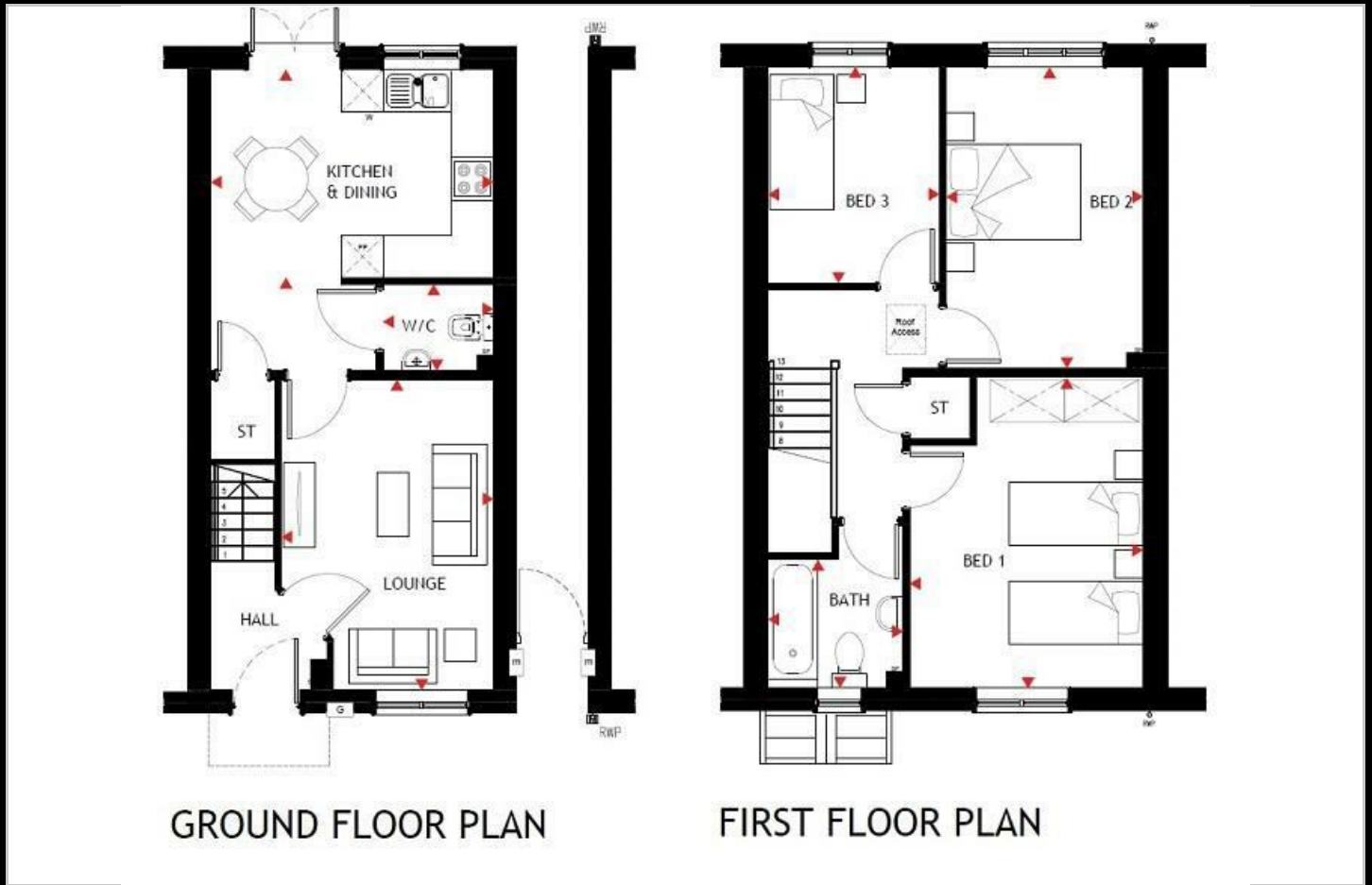
If you would like to apply for this property, please complete our online application form via our Signature Website

* Images are for illustration purposes only

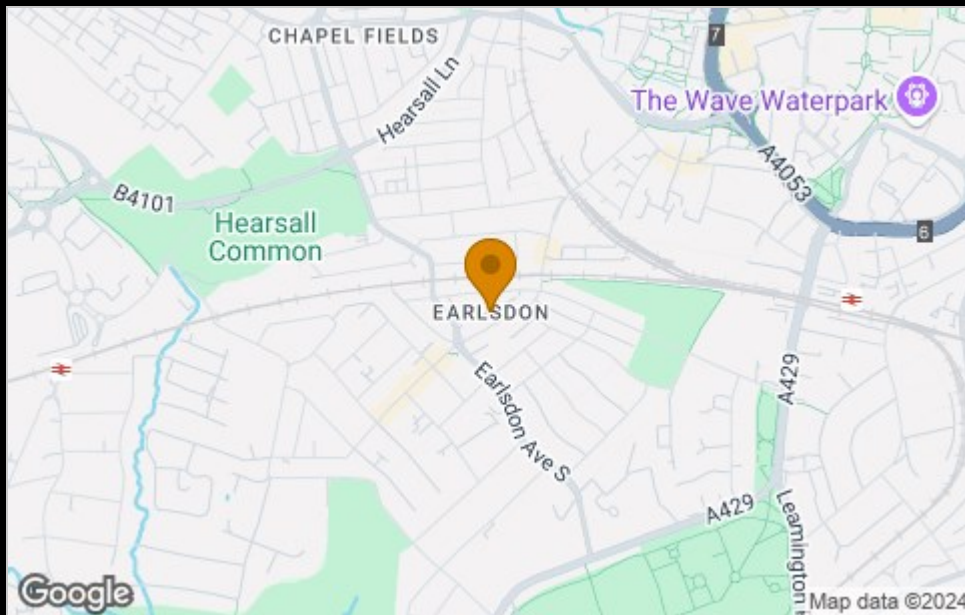
- Mid Terrace
- Vinyl flooring to wet areas
- Two parking spaces
- New build
- Good transport links
- Downstairs cloakroom
- Oven hob & extractor included
- Turf to rear garden
- near Coventry
- Three bedrooms



Floor Plan



Area Map



Viewing

Please contact our Citizen-Pippinfields, Allesley Office on 07736792306 if you wish to arrange a viewing appointment for this property

These particulars, whilst believed to be accurate are set out as a general outline only for guidance and do not constitute any part of an offer or contract. Intending purchasers should not rely on them as statements of representation of fact, but must satisfy themselves by inspection or otherwise as to their accuracy. No person in this firm's employment has the authority to make or give any representation or warranty in respect of the property.

4040 Lakeside, Solihull, West Midlands, B37 7YN

Email: sales@citizenhousing.org.uk or visit www.citizenhousing.org.uk

Energy Efficiency Graph

Energy Efficiency Rating		Current	Potential
Very energy efficient - lower running costs			
(92 plus) A			
(81-91) B			
(69-80) C			
(55-68) D			
(39-54) E			
(21-38) F			
(1-20) G			
Not energy efficient - higher running costs			
England & Wales		EU Directive 2002/91/EC	
Environmental Impact (CO ₂) Rating		Current	Potential
Very environmentally friendly - lower CO ₂ emissions			
(92 plus) A			
(81-91) B			
(69-80) C			
(55-68) D			
(39-54) E			
(21-38) F			
(1-20) G			
Not environmentally friendly - higher CO ₂ emissions			
England & Wales		EU Directive 2002/91/EC	



CITIZEN



Plot 75 Willow Grove "Sherbourne-D" - 40% Share

11 Platinum Way, Pickford Green, Coventry, CV5 9QR

40% Shared ownership £108,000



Plot 75 Willow Grove "Sherbourne-D" - 40% Share



Description

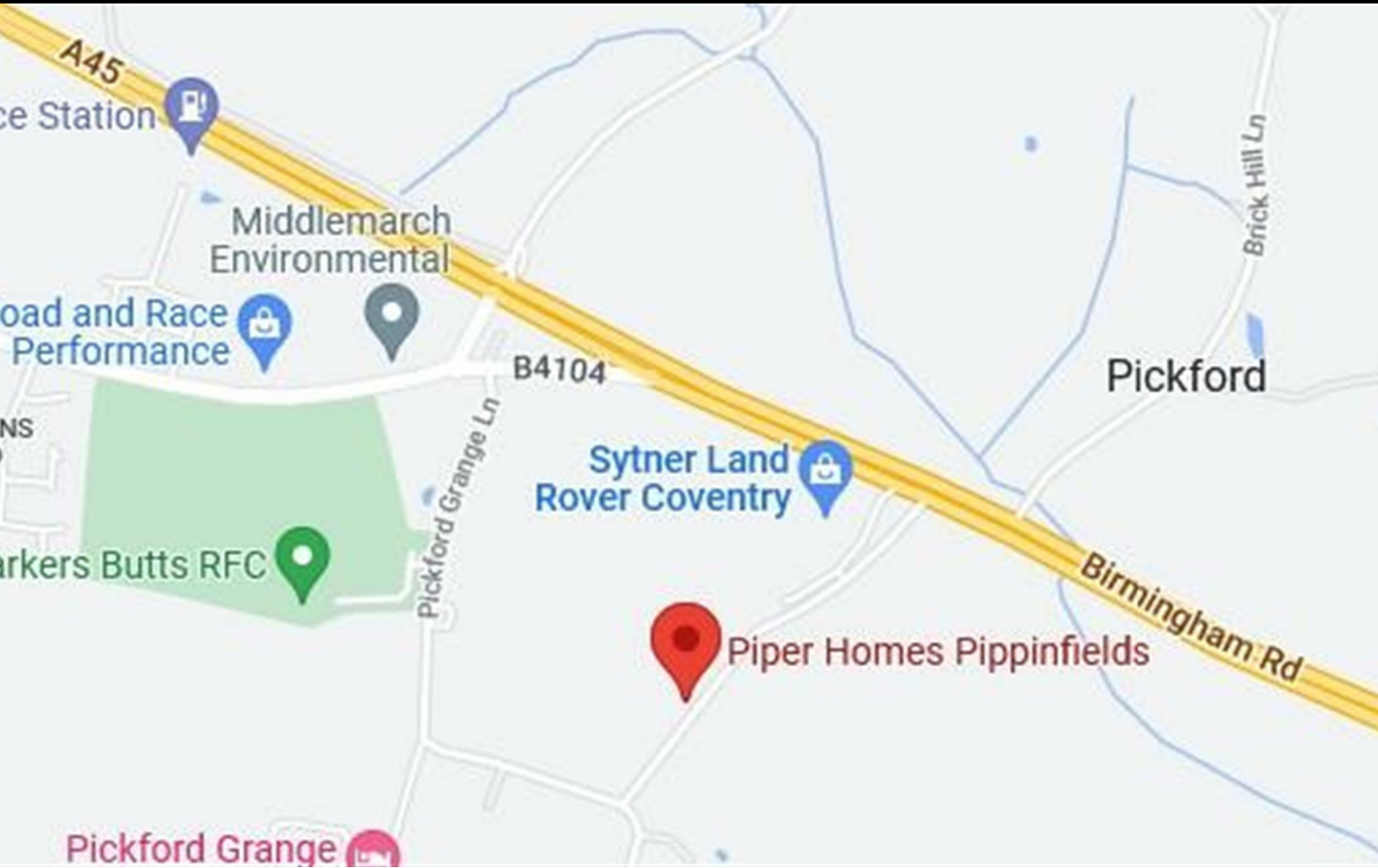
40% share available at £108,000

If you would like to apply for this property, please complete our online application form via our Signature Website

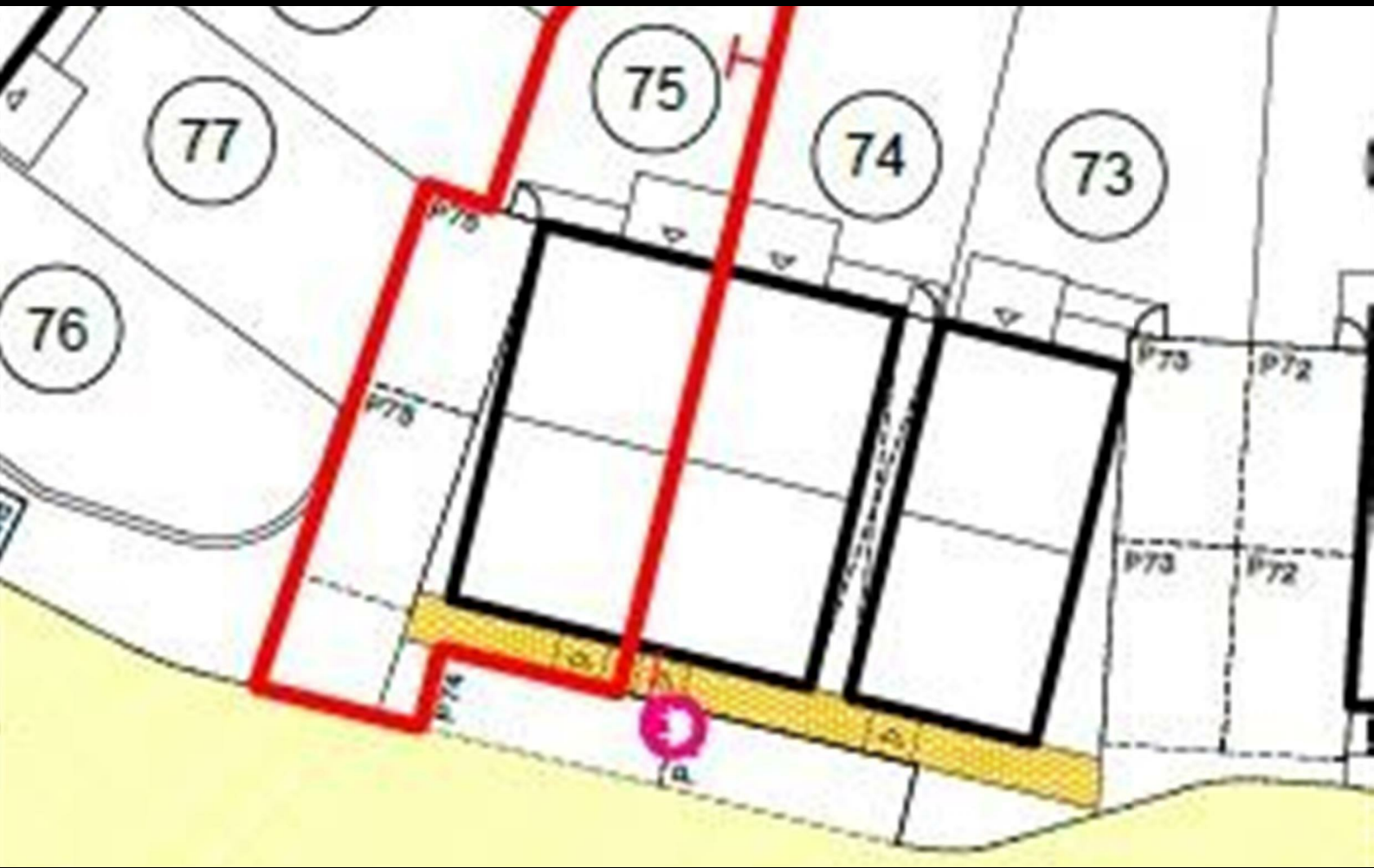
Ready to Occupy Mar/Apr 25

* Images are for illustration purposes only

- End Terrace
- Vinyl flooring to wet areas
- Two parking spaces
- New build
- Good transport links
- Downstairs cloakroom
- Oven hob & extractor included
- Turf to rear garden
- near Coventry
- Two double bedrooms



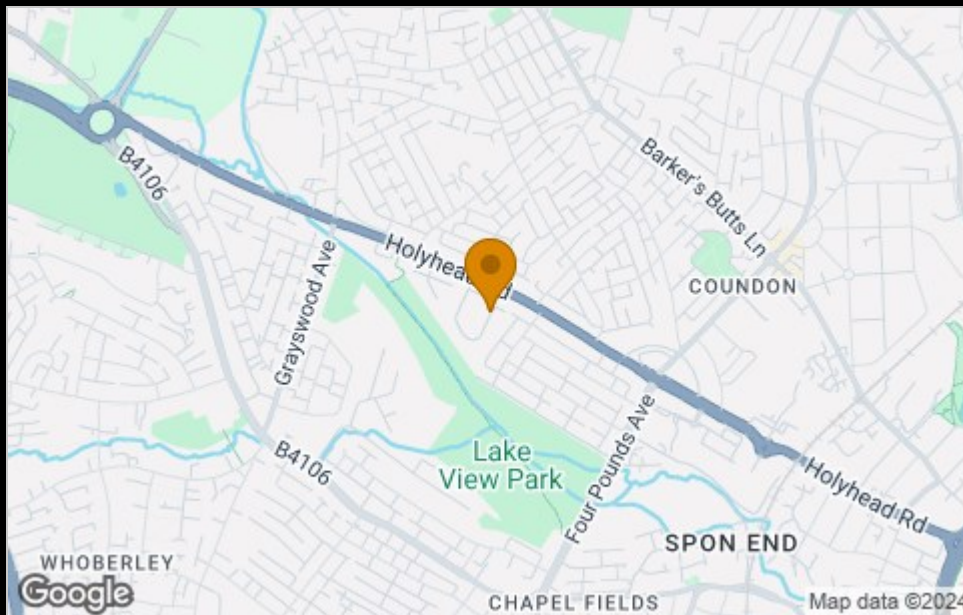
11 Platinum Way, Pickford Green, Coventry, CV5 9QR



Floor Plan



Area Map



Viewing

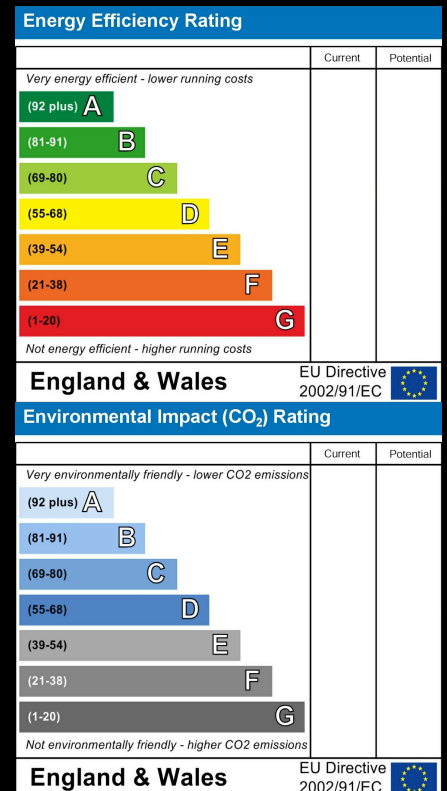
Please contact our Citizen-Pippinfields, Allesley Office on 07736792306 if you wish to arrange a viewing appointment for this property

These particulars, whilst believed to be accurate are set out as a general outline only for guidance and do not constitute any part of an offer or contract. Intending purchasers should not rely on them as statements of representation of fact, but must satisfy themselves by inspection or otherwise as to their accuracy. No person in this firm's employment has the authority to make or give any representation or warranty in respect of the property.

4040 Lakeside, Solihull, West Midlands, B37 7YN

Email: sales@citizenhousing.org.uk or visit www.citizenhousing.org.uk

Energy Efficiency Graph





CITIZEN



Plot 89 Willow Grove "Earlsdon E1" - 35% Share

26 Duke of Edinburgh Avenue, Pickford Green, Coventry, CV5 9RP

Price £110,250



Plot 89 Willow Grove "Earlsdon E1" - 35% Share



Description

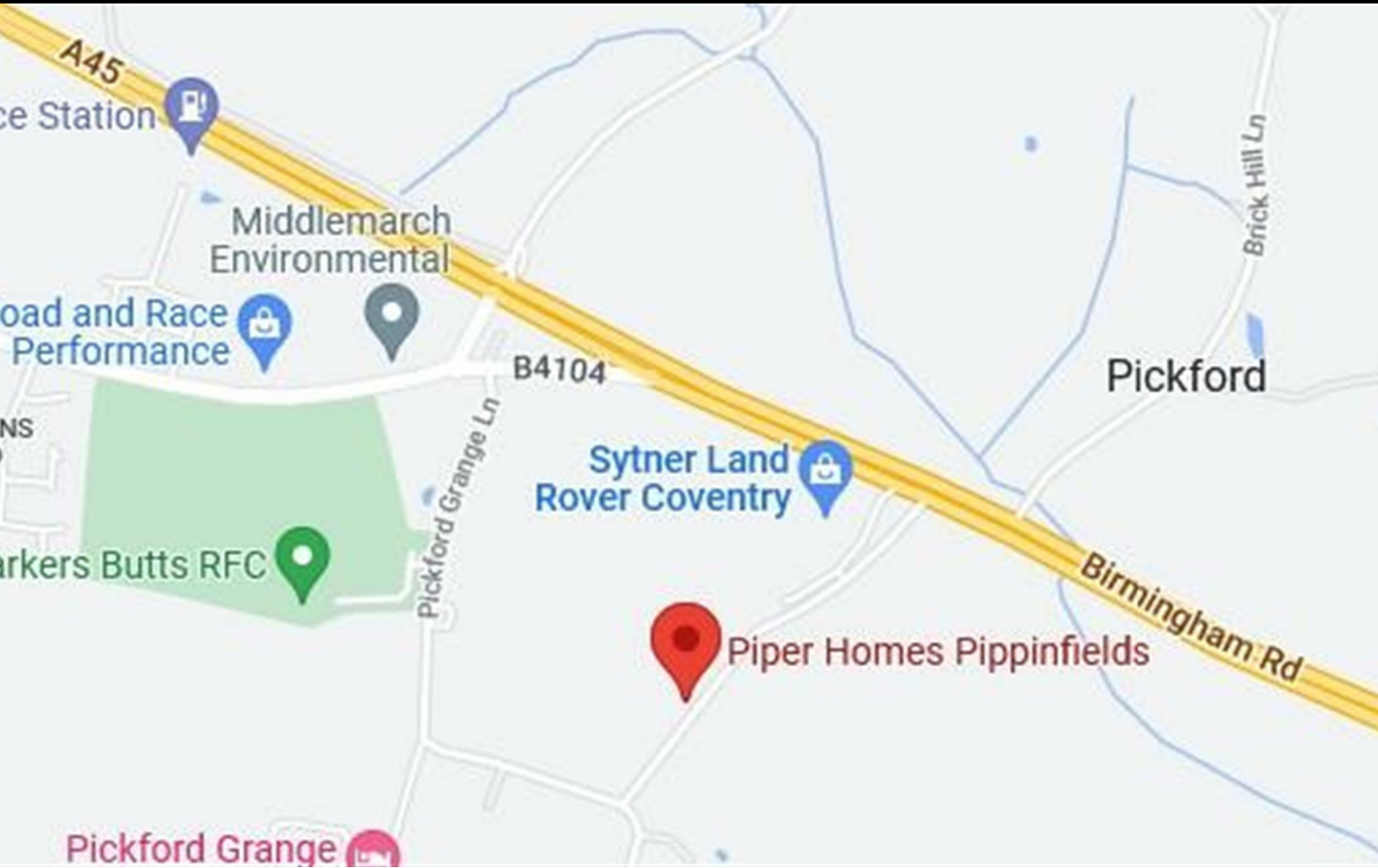
35% share available at £110,250

Ready to Occupy Mar/Apr 25

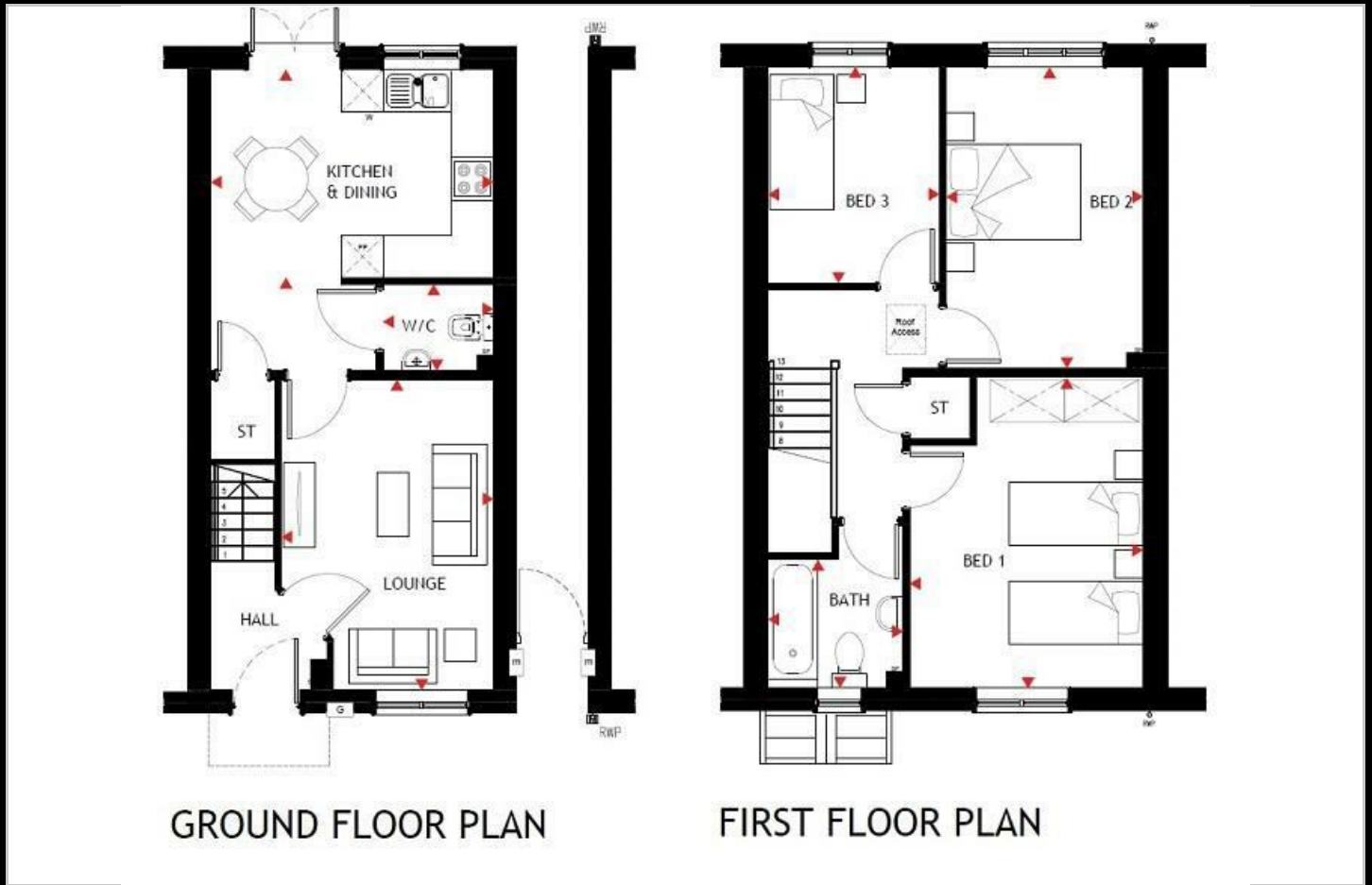
If you would like to apply for this property, please complete our online application form via our Signature Website

* Images are for illustration purposes only

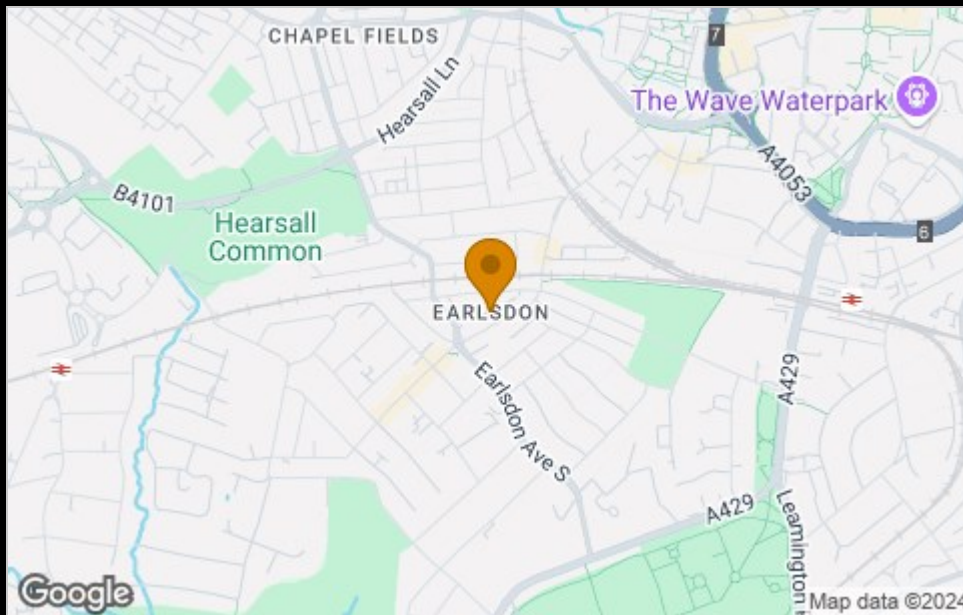
- Mid Terrace
- Vinyl flooring to wet areas
- Two parking spaces
- New build
- Good transport links
- Downstairs cloakroom
- Oven hob & extractor included
- Turf to rear garden
- near Coventry
- Three bedrooms



Floor Plan



Area Map



Viewing

Please contact our Citizen-Pippinfields, Allesley Office on 07736792306 if you wish to arrange a viewing appointment for this property

These particulars, whilst believed to be accurate are set out as a general outline only for guidance and do not constitute any part of an offer or contract. Intending purchasers should not rely on them as statements of representation of fact, but must satisfy themselves by inspection or otherwise as to their accuracy. No person in this firm's employment has the authority to make or give any representation or warranty in respect of the property.

4040 Lakeside, Solihull, West Midlands, B37 7YN

Email: sales@citizenhousing.org.uk or visit www.citizenhousing.org.uk

Energy Efficiency Graph

Energy Efficiency Rating		Current	Potential
Very energy efficient - lower running costs			
(92 plus) A			
(81-91) B			
(69-80) C			
(55-68) D			
(39-54) E			
(21-38) F			
(1-20) G			
Not energy efficient - higher running costs			
England & Wales		EU Directive 2002/91/EC	
Environmental Impact (CO ₂) Rating		Current	Potential
Very environmentally friendly - lower CO ₂ emissions			
(92 plus) A			
(81-91) B			
(69-80) C			
(55-68) D			
(39-54) E			
(21-38) F			
(1-20) G			
Not environmentally friendly - higher CO ₂ emissions			
England & Wales		EU Directive 2002/91/EC	



CITIZEN



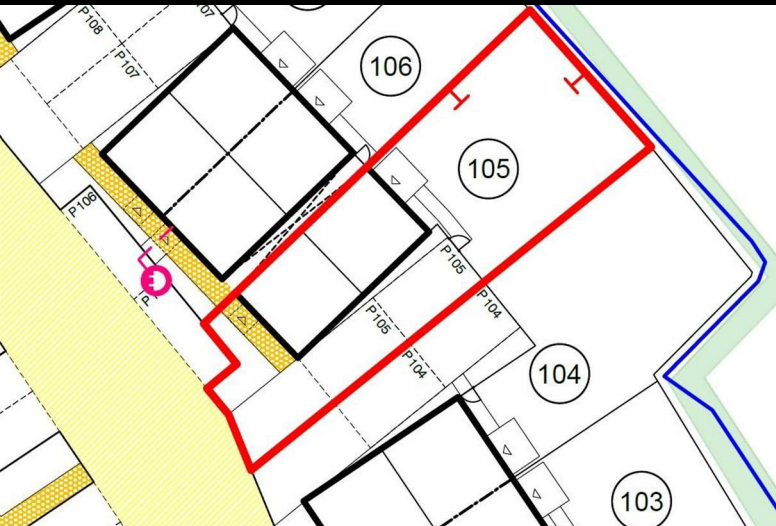
Plot 105 Willow Grove "Sherbourne-D" - 40% Share

23 Duke of Edinburgh, Pickford Green, Coventry, CV5 9RP

Price £108,000



Plot 105 Willow Grove "Sherbourne-D" - 40% Share



Description

40% share available at £108,000

If you would like to apply for this property, please complete our online application form via our Signature Website

Ready to Occupy Mar/Apr 25

* Images are for illustration purposes only

- End Terrace
- Vinyl flooring to wet areas
- Two parking spaces
- New build
- Good transport links
- Downstairs cloakroom
- Oven hob & extractor included
- Turf to rear garden
- near Coventry
- Two double bedrooms



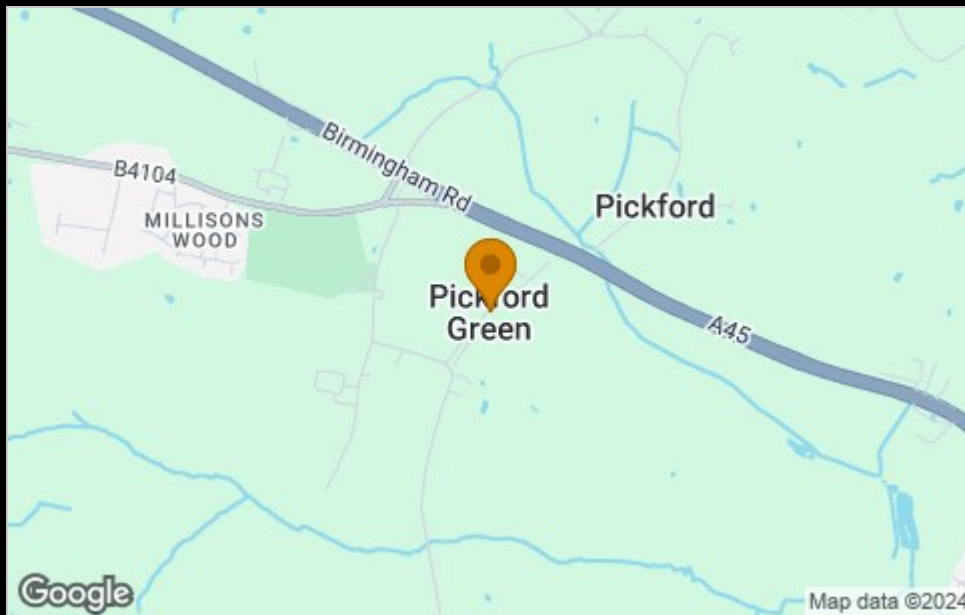
Floor Plan



GROUND FLOOR PLAN

FIRST FLOOR PLAN

Area Map



Viewing

Please contact our Citizen-Pippinfields, Allesley Office on 07736792306 if you wish to arrange a viewing appointment for this property

These particulars, whilst believed to be accurate are set out as a general outline only for guidance and do not constitute any part of an offer or contract. Intending purchasers should not rely on them as statements of representation of fact, but must satisfy themselves by inspection or otherwise as to their accuracy. No person in this firm's employment has the authority to make or give any representation or warranty in respect of the property.

4040 Lakeside, Solihull, West Midlands, B37 7YN

Email: sales@citizenhousing.org.uk or visit www.citizenhousing.org.uk

Energy Efficiency Graph

Energy Efficiency Rating		Current	Potential
Very energy efficient - lower running costs			
(92 plus)	A		
(81-91)	B		
(69-80)	C		
(55-68)	D		
(39-54)	E		
(21-38)	F		
(1-20)	G		
Not energy efficient - higher running costs			
England & Wales		EU Directive 2002/91/EC	
Environmental Impact (CO ₂) Rating		Current	Potential
Very environmentally friendly - lower CO ₂ emissions			
(92 plus)	A		
(81-91)	B		
(69-80)	C		
(55-68)	D		
(39-54)	E		
(21-38)	F		
(1-20)	G		
Not environmentally friendly - higher CO ₂ emissions			
England & Wales		EU Directive 2002/91/EC	



CITIZEN



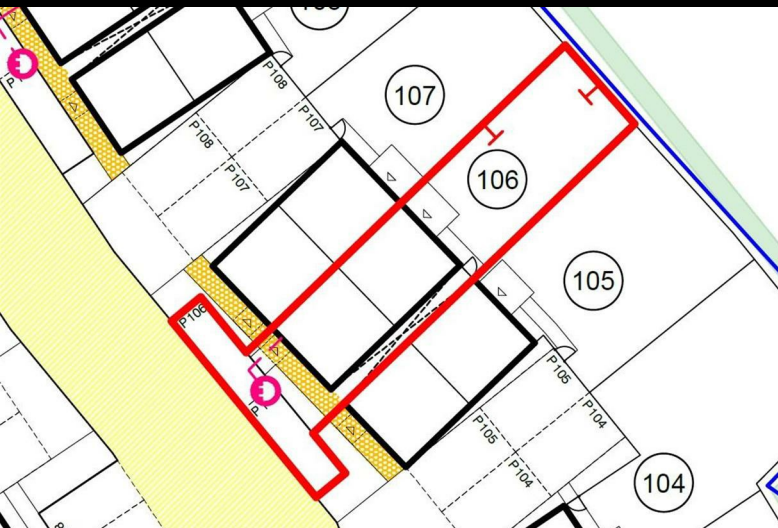
Plot 106 Willow Grove "Earlston E1" - 35% Share

21 Duke of Edinburgh Avenue, Pickford Green, Coventry, CV5 9RP

Price £110,250



Plot 106 Willow Grove "Earlsdon E1" - 35% Share



Description

35% share available at £110,250

Ready to Occupy Mar/Apr 25

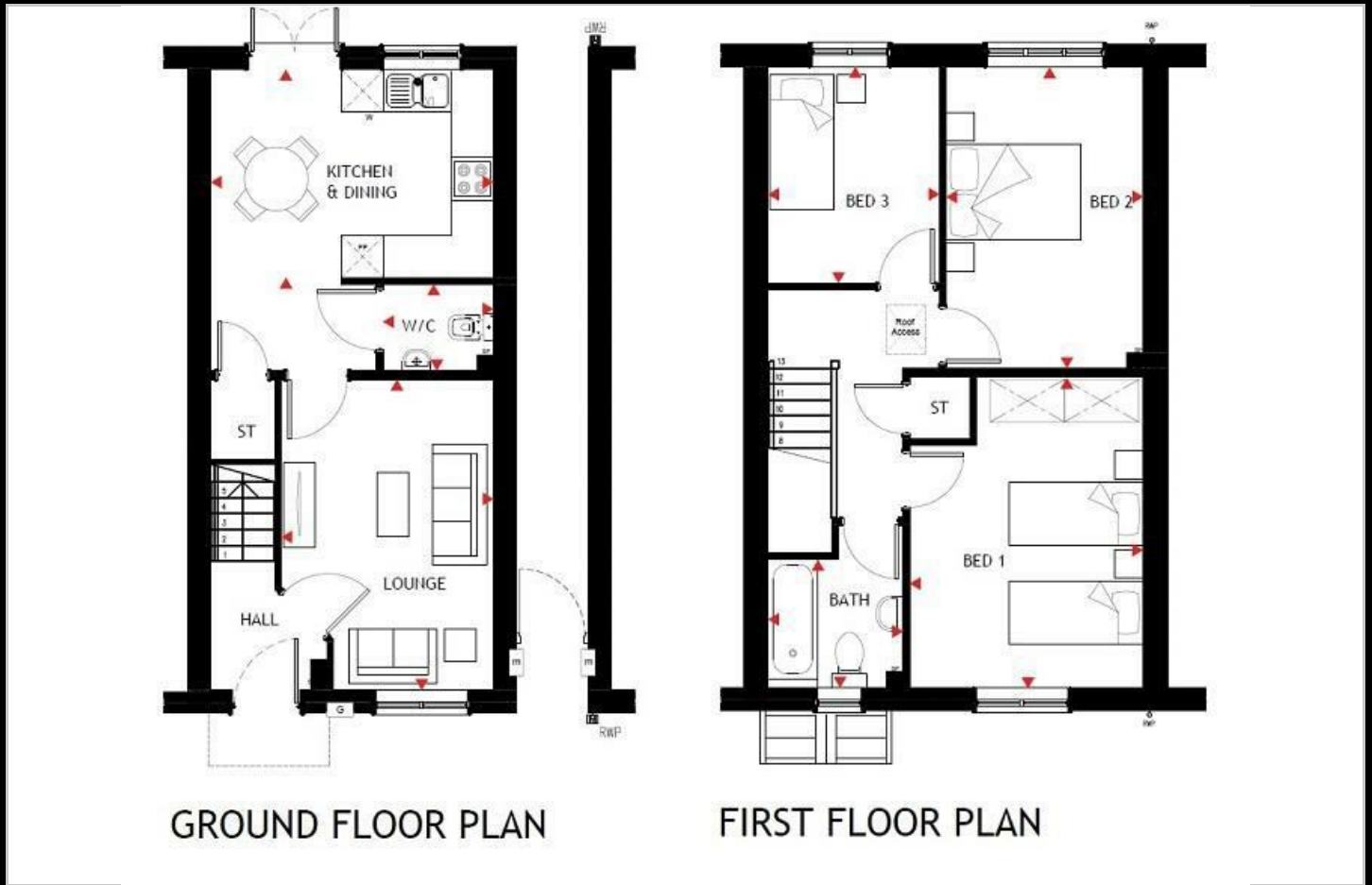
If you would like to apply for this property, please complete our online application form via our Signature Website

* Images are for illustration purposes only

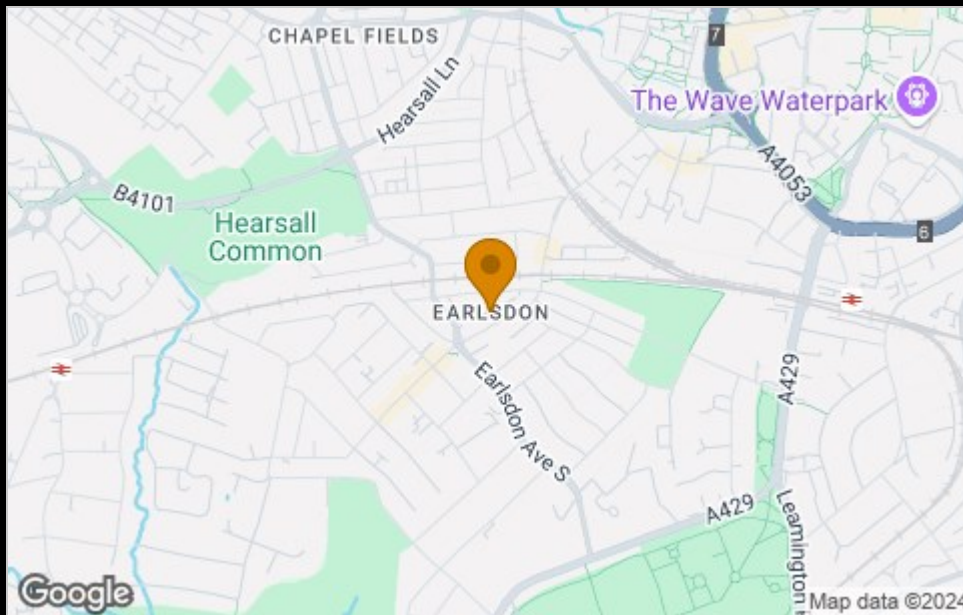
- Mid Terrace
- Vinyl flooring to wet areas
- Two parking spaces
- New build
- Good transport links
- Downstairs cloakroom
- Oven hob & extractor included
- Turf to rear garden
- near Coventry
- Three bedrooms



Floor Plan



Area Map



Viewing

Please contact our Citizen-Pippinfields, Allesley Office on 07736792306 if you wish to arrange a viewing appointment for this property

These particulars, whilst believed to be accurate are set out as a general outline only for guidance and do not constitute any part of an offer or contract. Intending purchasers should not rely on them as statements of representation of fact, but must satisfy themselves by inspection or otherwise as to their accuracy. No person in this firm's employment has the authority to make or give any representation or warranty in respect of the property.

4040 Lakeside, Solihull, West Midlands, B37 7YN

Email: sales@citizenhousing.org.uk or visit www.citizenhousing.org.uk

Energy Efficiency Graph

Energy Efficiency Rating		Current	Potential
Very energy efficient - lower running costs			
(92 plus) A			
(81-91) B			
(69-80) C			
(55-68) D			
(39-54) E			
(21-38) F			
(1-20) G			
Not energy efficient - higher running costs			
England & Wales		EU Directive 2002/91/EC	
Environmental Impact (CO ₂) Rating		Current	Potential
Very environmentally friendly - lower CO ₂ emissions			
(92 plus) A			
(81-91) B			
(69-80) C			
(55-68) D			
(39-54) E			
(21-38) F			
(1-20) G			
Not environmentally friendly - higher CO ₂ emissions			
England & Wales		EU Directive 2002/91/EC	



CITIZEN



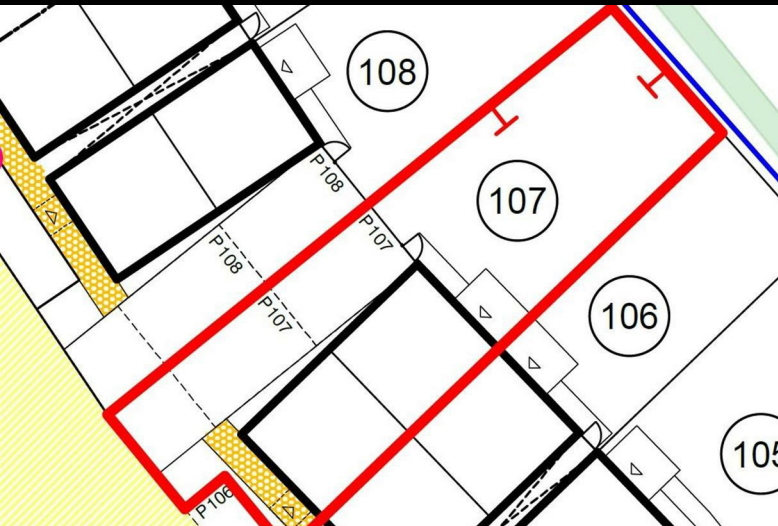
Plot 107 Willow Grove "Sherbourne-D" - 40% Share

19 Duke of Edinburgh, Pickford Green, Coventry, CV5 9RP

Price £108,000



Plot 107 Willow Grove "Sherbourne-D" - 40% Share



Description

40% share available at £108,000

If you would like to apply for this property, please complete our online application form via our Signature Website

Ready to Occupy Mar/Apr 25

* Images are for illustration purposes only

- End Terrace
- Vinyl flooring to wet areas
- Two parking spaces
- New build
- Good transport links
- Downstairs cloakroom
- Oven hob & extractor included
- Turf to rear garden
- near Coventry
- Two double bedrooms



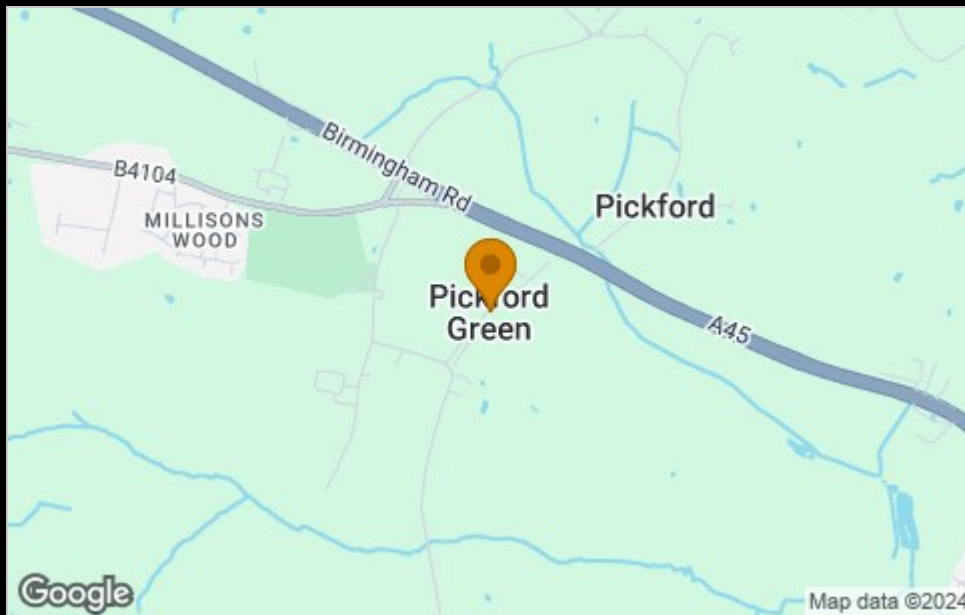
Floor Plan



GROUND FLOOR PLAN

FIRST FLOOR PLAN

Area Map



Viewing

Please contact our Citizen-Pippinfields, Allesley Office on 07736792306 if you wish to arrange a viewing appointment for this property

These particulars, whilst believed to be accurate are set out as a general outline only for guidance and do not constitute any part of an offer or contract. Intending purchasers should not rely on them as statements of representation of fact, but must satisfy themselves by inspection or otherwise as to their accuracy. No person in this firm's employment has the authority to make or give any representation or warranty in respect of the property.

4040 Lakeside, Solihull, West Midlands, B37 7YN

Email: sales@citizenhousing.org.uk or visit www.citizenhousing.org.uk

Energy Efficiency Graph

Energy Efficiency Rating		Current	Potential
Very energy efficient - lower running costs			
(92 plus) A			
(81-91) B			
(69-80) C			
(55-68) D			
(39-54) E			
(21-38) F			
(1-20) G			
Not energy efficient - higher running costs			
England & Wales		EU Directive 2002/91/EC	
Environmental Impact (CO ₂) Rating		Current	Potential
Very environmentally friendly - lower CO ₂ emissions			
(92 plus) A			
(81-91) B			
(69-80) C			
(55-68) D			
(39-54) E			
(21-38) F			
(1-20) G			
Not environmentally friendly - higher CO ₂ emissions			
England & Wales		EU Directive 2002/91/EC	

