



CITIZEN



Plot 280 Orchard Mews -Type 65- 40% Share

22 Damson End, Pershore, WR10 2FH

40% Shared ownership £99,000



Plot 280 Orchard Mews -Type 65- 40% Share



Description

Plot 280 Orchard Mews - Purchase Price 40% share £99,000
Total Rent £373.08 pcm

Please note the homes at Orchard Mews are restricted staircasing, up to a maximum of 80% ownership.

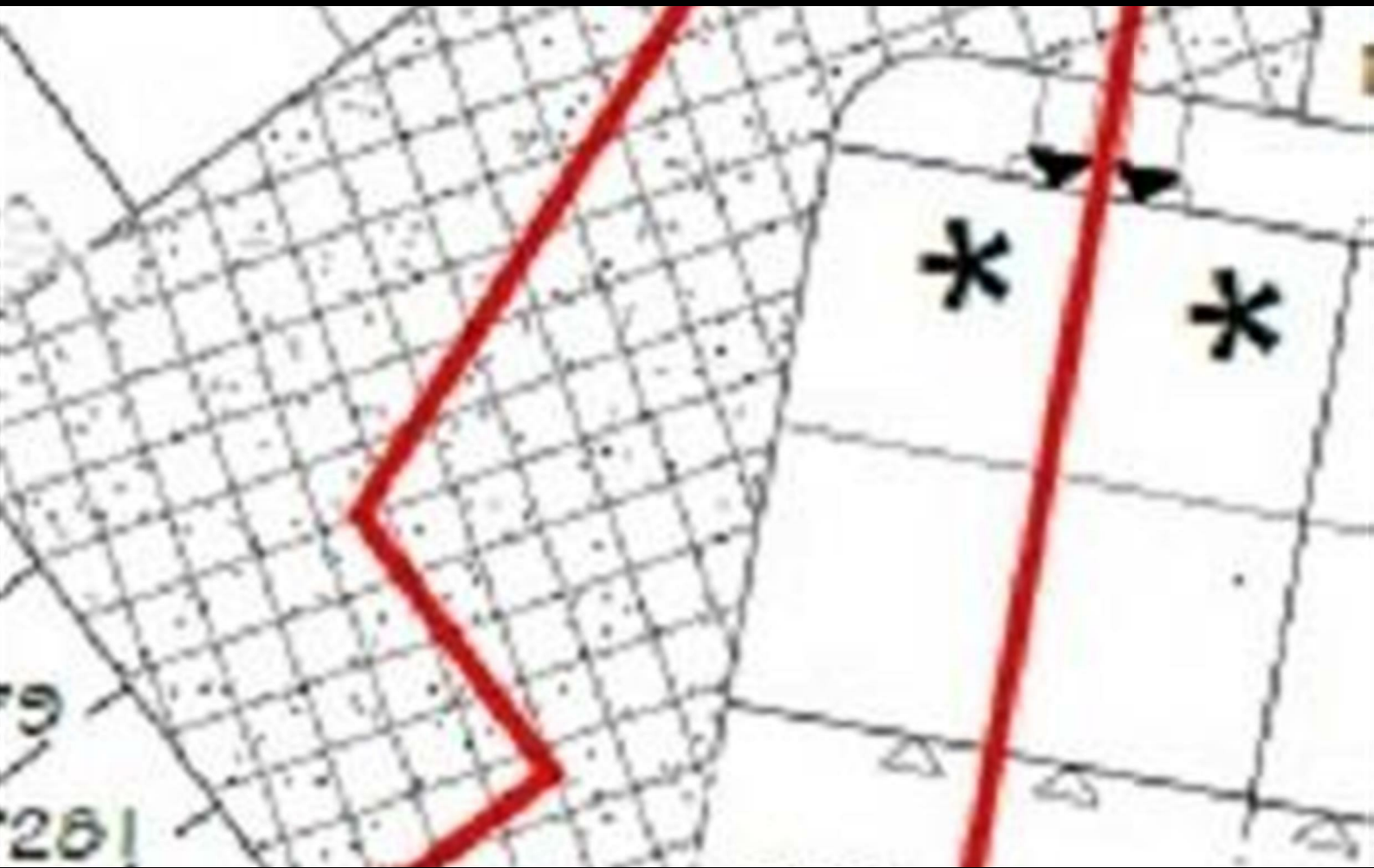
If you would like to apply for this property, please complete our online application form via our Signature Website

READY TO OCCUPY

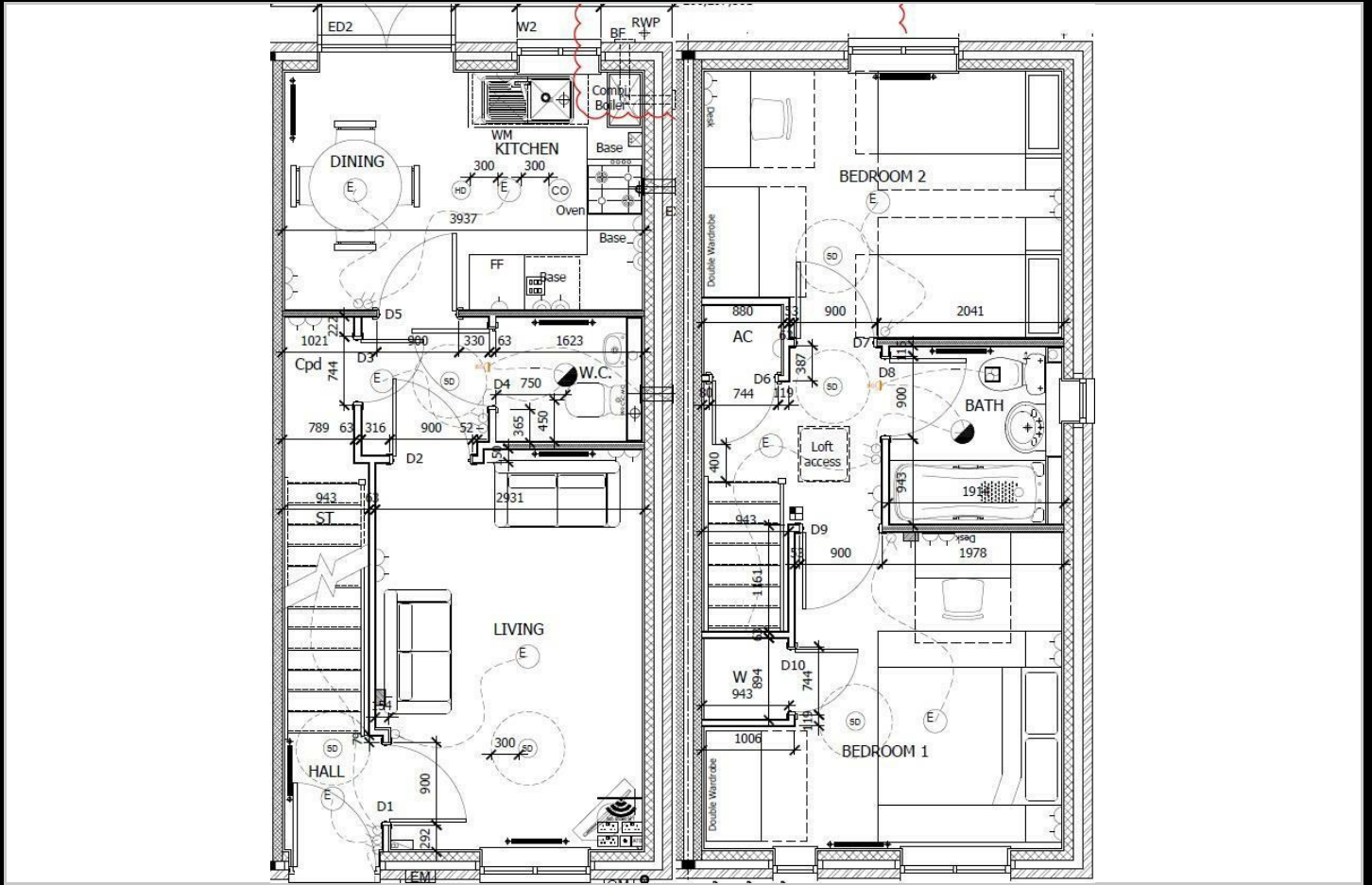
* Images are for illustration purposes only

- End Terrace
- New Build
- 2 parking spaces
- Hob, oven & extractor included
- Turf to rear garden
- Two Bedrooms
- Downstairs cloakroom
- Near Evesham & Worcester
- Vinyl to wet areas
- 1.8m rear fencing

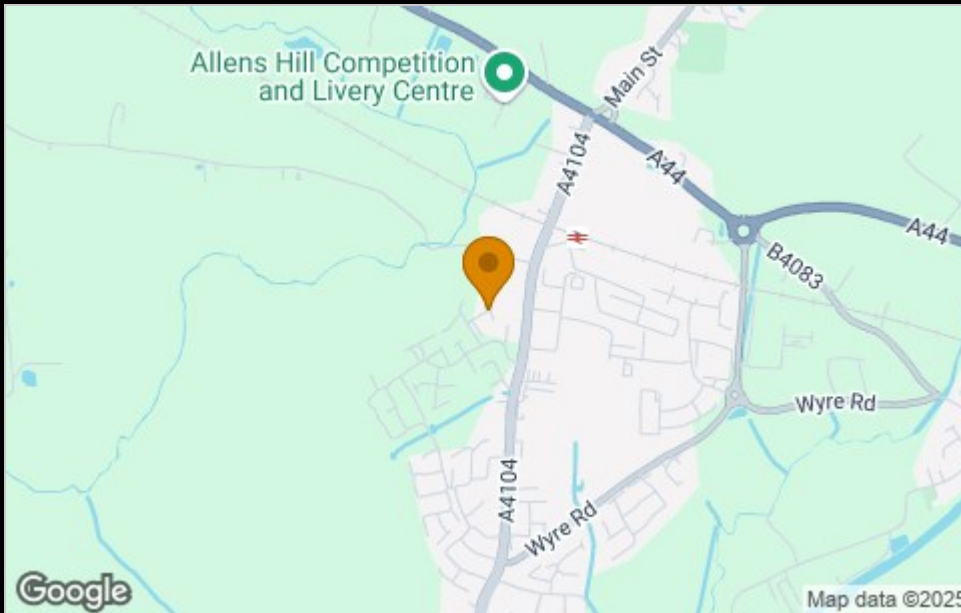




Floor Plan



Area Map



Viewing

Please contact our Sales Advisor Kellie on 07807 787747 if you wish to arrange a viewing appointment for this property or require further information.

Energy Efficiency Graph

Energy Efficiency Rating		Current	Potential
Very energy efficient - lower running costs			
(92 plus) A			
(81-91) B			
(69-80) C			
(55-68) D			
(39-54) E			
(21-38) F			
(1-20) G			
Not energy efficient - higher running costs			
England & Wales		EU Directive 2002/91/EC	
Environmental Impact (CO ₂) Rating		Current	Potential
Very environmentally friendly - lower CO ₂ emissions			
(92 plus) A			
(81-91) B			
(69-80) C			
(55-68) D			
(39-54) E			
(21-38) F			
(1-20) G			
Not environmentally friendly - higher CO ₂ emissions			
England & Wales		EU Directive 2002/91/EC	

These particulars, whilst believed to be accurate are set out as a general outline only for guidance and do not constitute any part of an offer or contract. Intending purchasers should not rely on them as statements of representation of fact, but must satisfy themselves by inspection or otherwise as to their accuracy. No person in this firm's employment has the authority to make or give any representation or warranty in respect of the property.

4040 Lakeside, Solihull, West Midlands, B37 7YN

Email: sales@citizenhousing.org.uk or visit www.citizenhousing.org.uk



CITIZEN



Plot 301 Orchard Mews 'Type 65' - 40% Share

6 Blackberry Meadow, Pershore, WR10 2FG

40% Shared ownership £100,000



Plot 301 Orchard Mews 'Type 65' - 40% Share



Description

Plot 301 Orchard Mews - 40% share £100,000 Total Rent £376.52 pcm

Please note the homes at Orchard Mews are restricted staircasing, up to a maximum of 80% ownership.

If you would like to apply for this property, please complete our online application form via our Signature Website

AVAILABLE NOW

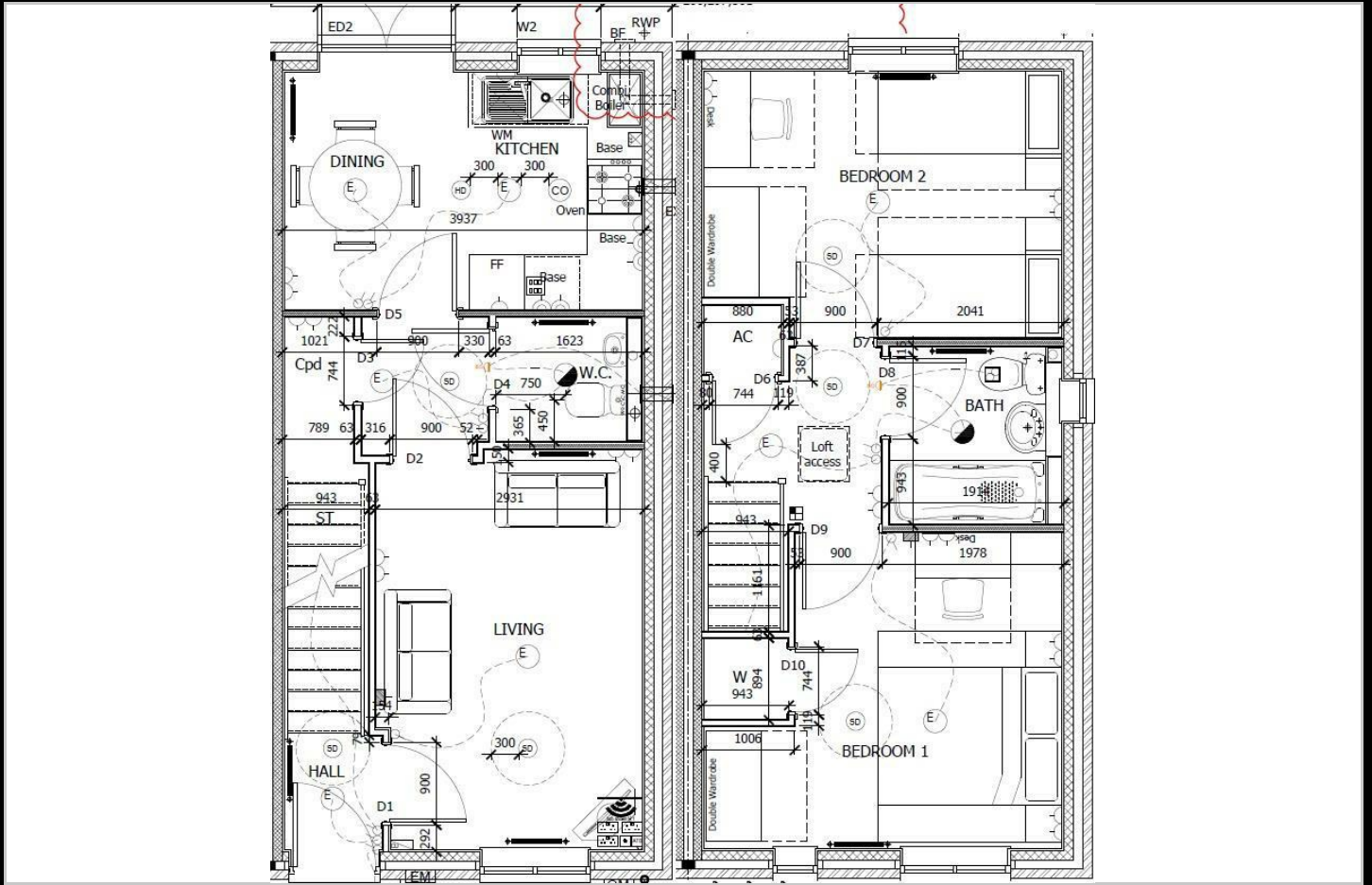
* Images are for illustration purposes only

- Semi Detached
- New Build
- 2 parking spaces
- Hob, oven & extractor included
- Turf to rear garden
- Two Bedrooms
- Downstairs cloakroom
- Near Evesham & Worcester
- Vinyl to wet areas
- 1.8m rear fencing

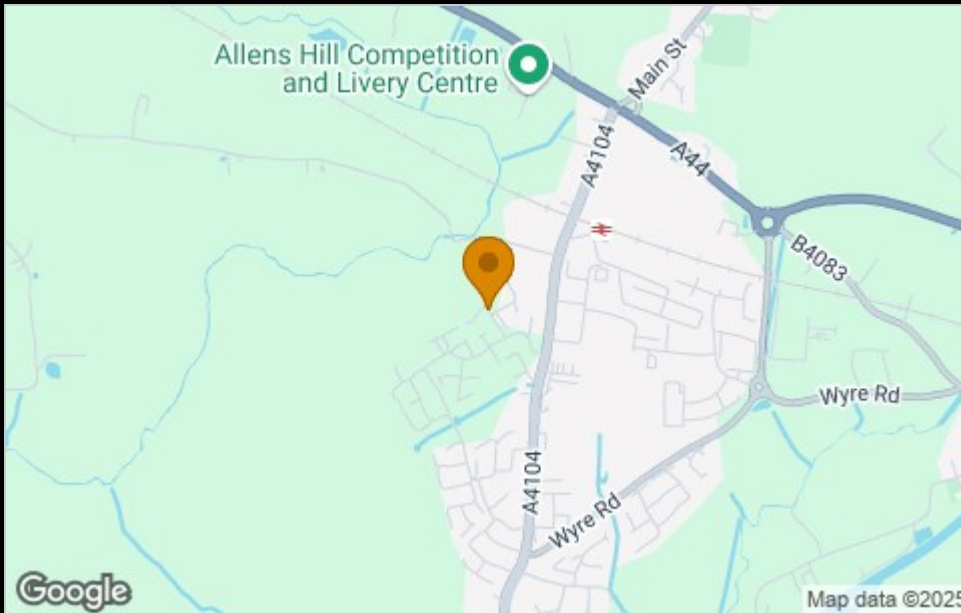




Floor Plan



Area Map



Viewing

Please contact our Sales Advisor Kellie on 07807 787747 if you wish to arrange a viewing appointment for this property or require further information.

Energy Efficiency Graph

Energy Efficiency Rating		Current	Potential
Very energy efficient - lower running costs			
(92 plus) A			
(81-91) B			
(69-80) C			
(55-68) D			
(39-54) E			
(21-38) F			
(1-20) G			
Not energy efficient - higher running costs			
England & Wales		EU Directive 2002/91/EC	
Environmental Impact (CO ₂) Rating		Current	Potential
Very environmentally friendly - lower CO ₂ emissions			
(92 plus) A			
(81-91) B			
(69-80) C			
(55-68) D			
(39-54) E			
(21-38) F			
(1-20) G			
Not environmentally friendly - higher CO ₂ emissions			
England & Wales		EU Directive 2002/91/EC	

These particulars, whilst believed to be accurate are set out as a general outline only for guidance and do not constitute any part of an offer or contract. Intending purchasers should not rely on them as statements of representation of fact, but must satisfy themselves by inspection or otherwise as to their accuracy. No person in this firm's employment has the authority to make or give any representation or warranty in respect of the property.

4040 Lakeside, Solihull, West Midlands, B37 7YN

Email: sales@citizenhousing.org.uk or visit www.citizenhousing.org.uk



CITIZEN



Plot 411 Orchard Mews "Type 65" - 40% Share

26 Elderberry Grove, Pershore, WR10 2FN

40% Shared ownership £100,000



Plot 411 Orchard Mews "Type 65" - 40% Share



Description

Plot 411 Orchard Mews - Purchase Price 40% share £100,000

Total Rent £376.52 pcm

READY TO OCCUPY

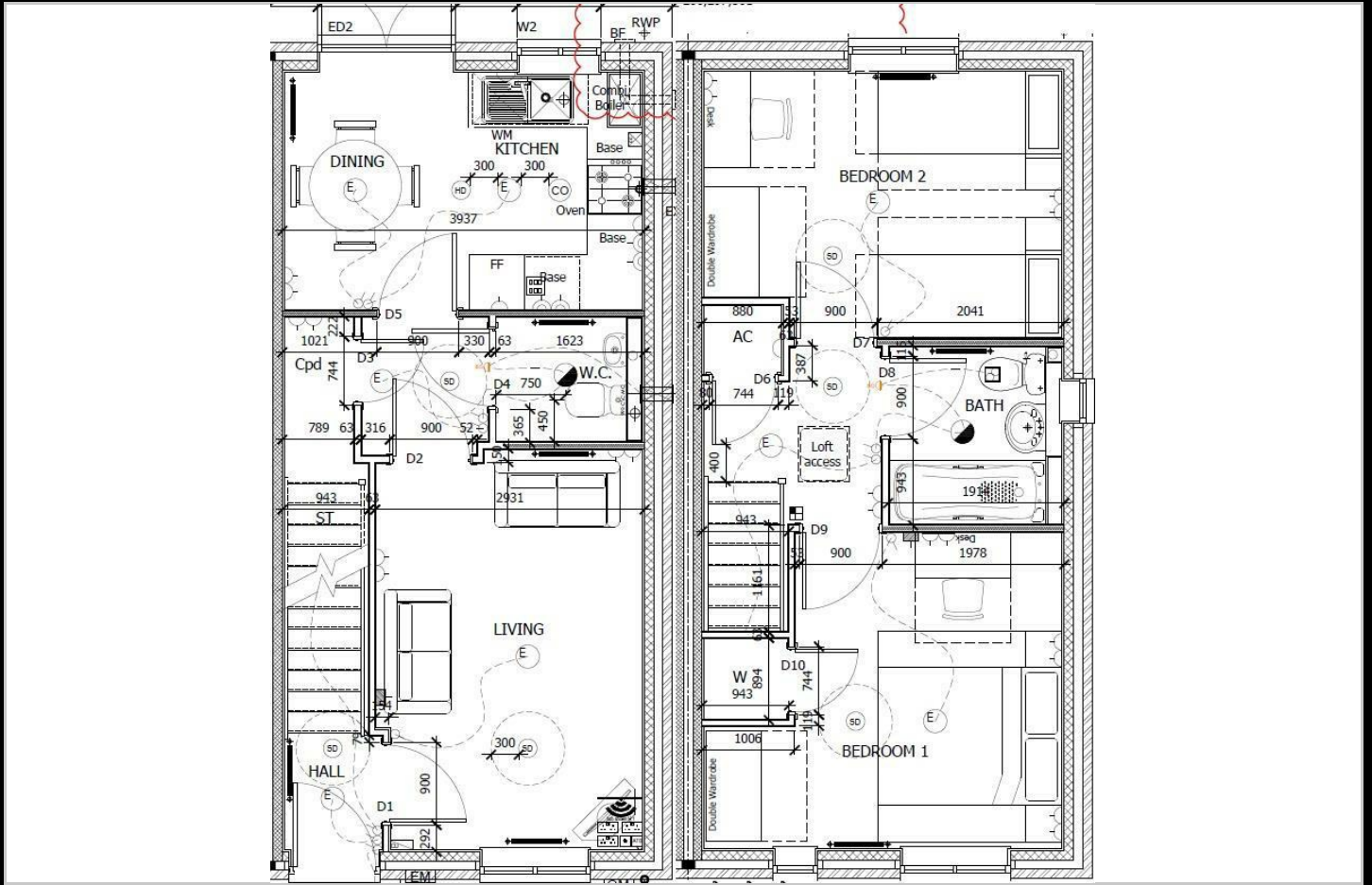
If you would like to apply for this property, please complete our online application form via our Signature Website

* Images are for illustration purposes only

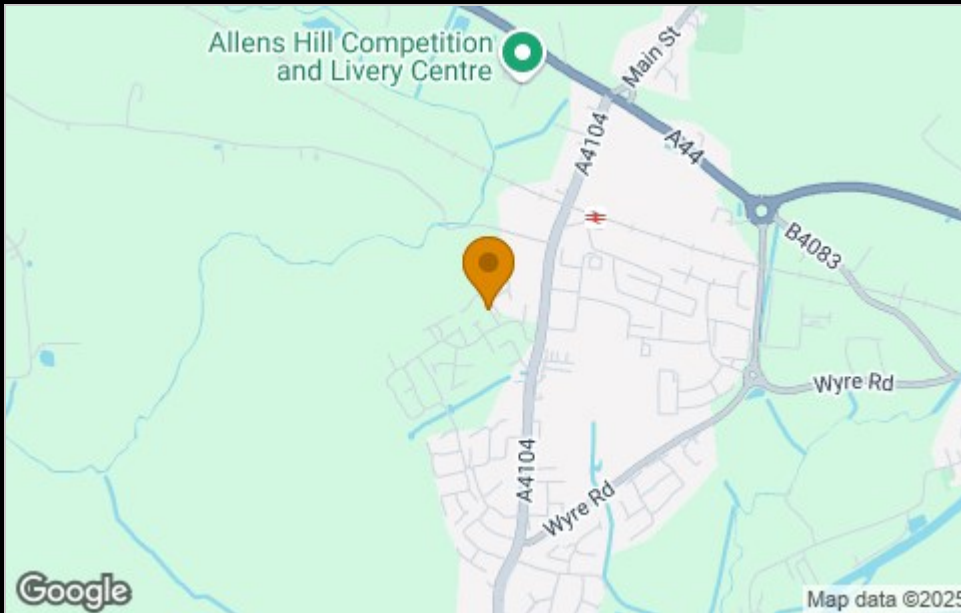
- Semi Detached
- New Build
- 2 parking spaces
- Hob, oven & extractor included
- Turf to rear garden
- Two Bedrooms
- Downstairs cloakroom
- Near Evesham & Worcester
- Vinyl to wet areas
- 1.8m rear fencing



Floor Plan



Area Map



Viewing

Please contact our Sales Advisor Kellie on 07807 787747 if you wish to arrange a viewing appointment for this property or require further information

These particulars, whilst believed to be accurate are set out as a general outline only for guidance and do not constitute any part of an offer or contract. Intending purchasers should not rely on them as statements of representation of fact, but must satisfy themselves by inspection or otherwise as to their accuracy. No person in this firm's employment has the authority to make or give any representation or warranty in respect of the property.

4040 Lakeside, Solihull, West Midlands, B37 7YN

Email: sales@citizenhousing.org.uk or visit www.citizenhousing.org.uk

Energy Efficiency Graph

Energy Efficiency Rating		Current	Potential
Very energy efficient - lower running costs			
(92 plus) A			
(81-91) B			
(69-80) C			
(55-68) D			
(39-54) E			
(21-38) F			
(1-20) G			
Not energy efficient - higher running costs			
England & Wales		EU Directive 2002/91/EC	
Environmental Impact (CO ₂) Rating		Current	Potential
Very environmentally friendly - lower CO ₂ emissions			
(92 plus) A			
(81-91) B			
(69-80) C			
(55-68) D			
(39-54) E			
(21-38) F			
(1-20) G			
Not environmentally friendly - higher CO ₂ emissions			
England & Wales		EU Directive 2002/91/EC	

