



CITIZEN



Plot 16 Sonnet Park “Haldon” 40% Share

33 Windhover Road, Stratford-Upon-Avon, CV37 7FY

40% Shared ownership £112,600



2



1



1



B

Plot 16 Sonnet Park "Haldon" 40% Share

Sonnet Park

Banbury Rd, Stratford-upon-Avon CV37 7GY

2 Bedroom Homes

**5%
Deposit
Paid***

*5% of
advertised
share only



Description

Plot 16 Sonnet Park "Haldon" 40% Share Total Rent £439.95 pcm

READY TO OCCUPY

This house type is 772 sq ft which is larger than the 2 bedroom Persimmon private homes available, "Alnmouth (643sq ft)" and the "Arden" (554 sq ft)

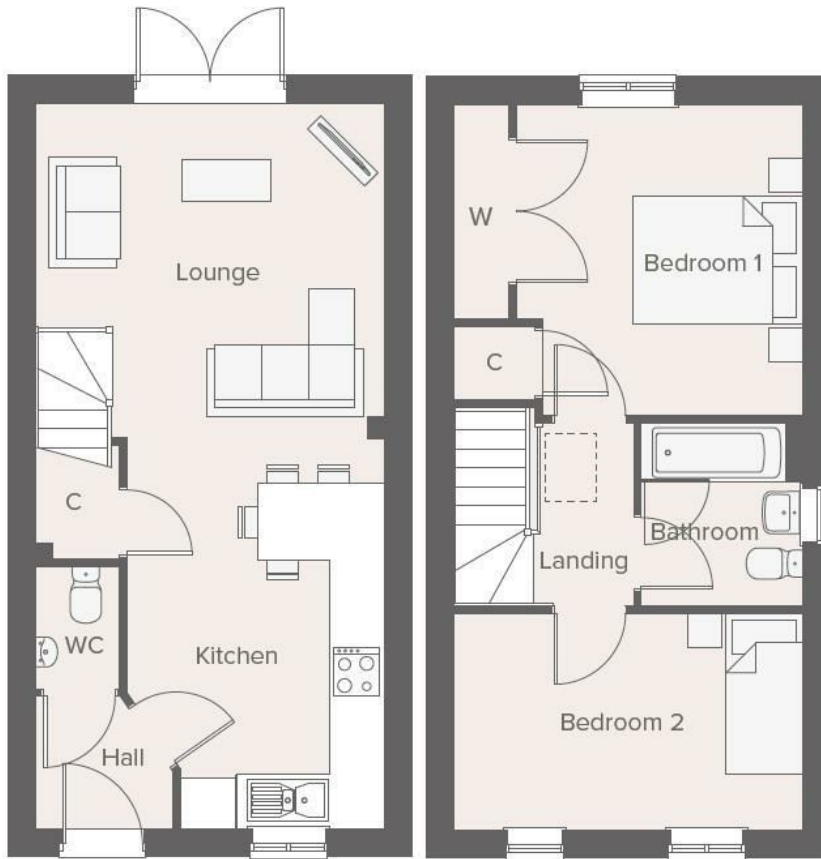
If you would like to apply for this property, please complete our online application form via our Signature Website

- Mid terrace
- Vinyl flooring to wet areas
- Turf to rear garden
- Oven, hob and extractor included
- New build
- 2 parking spaces
- Carpets fitted throughout
- 2 spacious bedrooms
- Good transport links - nr Warwick
- Downstairs cloakroom

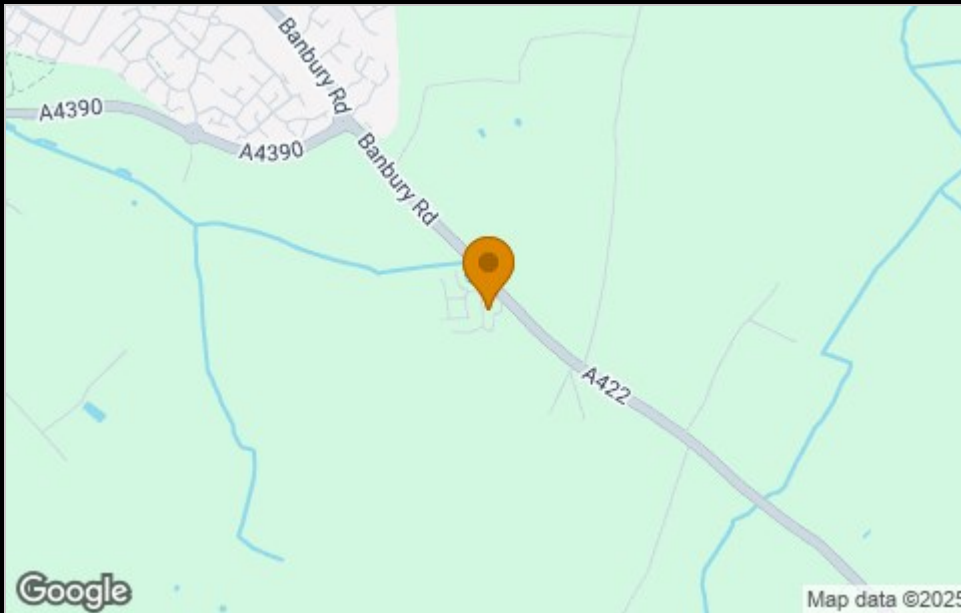




Floor Plan



Area Map



Viewing

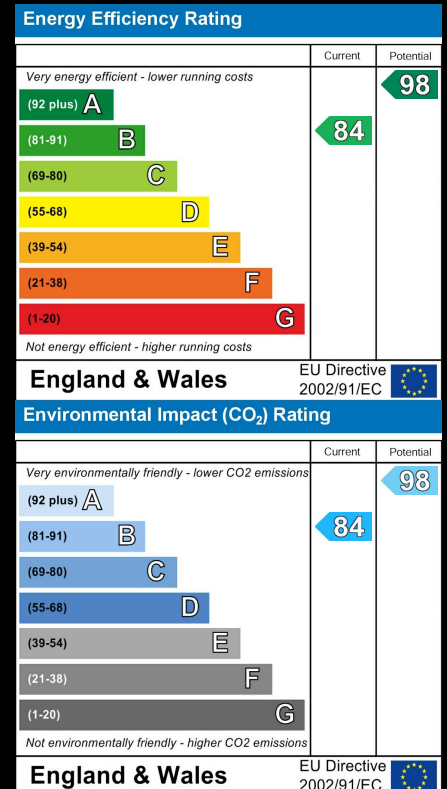
Please email sales@citizenhousing.org.uk if you wish to arrange a viewing appointment for this property or require further information.

These particulars, whilst believed to be accurate are set out as a general outline only for guidance and do not constitute any part of an offer or contract. Intending purchasers should not rely on them as statements of representation of fact, but must satisfy themselves by inspection or otherwise as to their accuracy. No person in this firm's employment has the authority to make or give any representation or warranty in respect of the property.

4040 Lakeside, Solihull, West Midlands, B37 7YN

Email: sales@citizenhousing.org.uk or visit www.citizenhousing.org.uk

Energy Efficiency Graph





CITIZEN



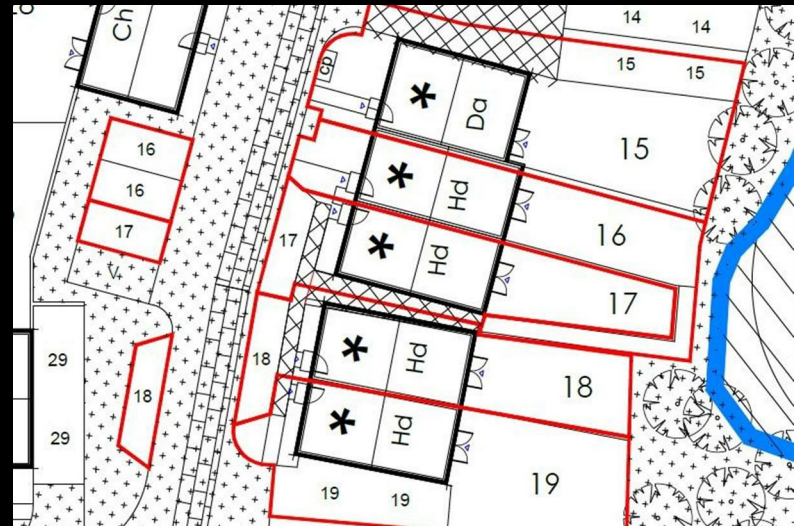
Plot 17 Sonnet Park "Haldon" 40% Share

35 Windhover Road, Stratford-Upon-Avon, CV37 7FY

40% Shared ownership £114,510



Plot 17 Sonnet Park "Haldon" 40% Share



Description

Plot 17 Sonnet Park "Haldon" 40% Share Total Rent £446.52 pcm

READY TO OCCUPY

This house type is 772 sq ft which is larger than the 2 bedroom Persimmon private homes available, "Alnmouth (643sq ft)" and the "Arden" (554 sq ft)

If you would like to apply for this property, please complete our online application form via our Signature Website

- End terrace
- Vinyl flooring to wet areas
- Turf to rear garden
- Oven, hob and extractor included
- New build
- 2 parking spaces
- Carpets fitted throughout
- 2 spacious bedrooms
- nr Warwick - good transport links
- Downstairs cloakroom

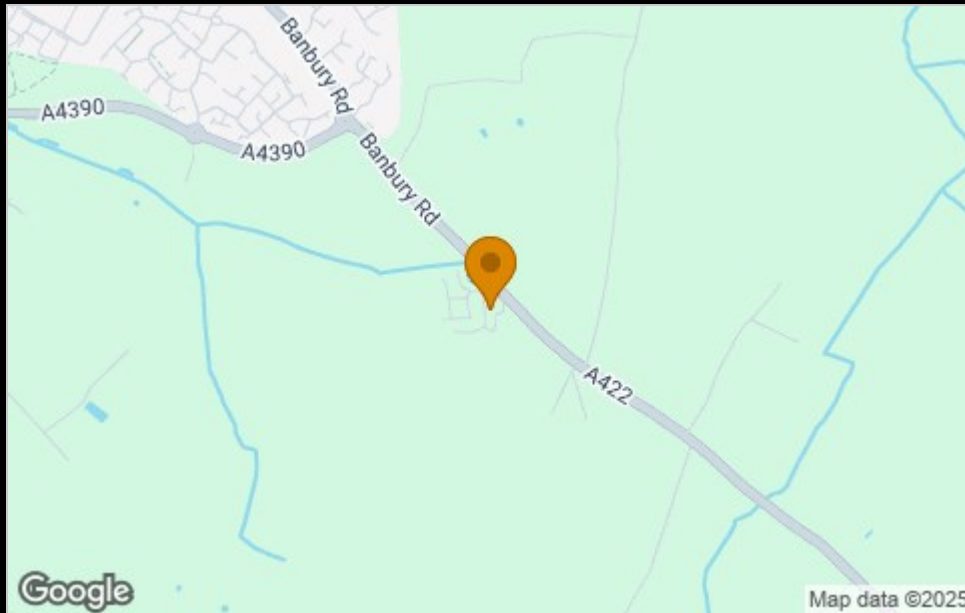




Floor Plan



Area Map



Viewing



Please email sales@citizenhousing.org.uk if you wish to arrange a viewing appointment for this property or require further information.

These particulars, whilst believed to be accurate are set out as a general outline only for guidance and do not constitute any part of an offer or contract. Intending purchasers should not rely on them as statements of representation of fact, but must satisfy themselves by inspection or otherwise as to their accuracy. No person in this firm's employment has the authority to make or give any representation or warranty in respect of the property.

4040 Lakeside, Solihull, West Midlands, B37 7YN

Email: sales@citizenhousing.org.uk or visit www.citizenhousing.org.uk

Energy Efficiency Graph

Energy Efficiency Rating		Current	Potential
Very energy efficient - lower running costs			
(92 plus) A			
(81-91) B			
(69-80) C			
(55-68) D			
(39-54) E			
(21-38) F			
(1-20) G			
Not energy efficient - higher running costs			
England & Wales		EU Directive 2002/91/EC 	
Environmental Impact (CO ₂) Rating		Current	Potential
Very environmentally friendly - lower CO ₂ emissions			
(92 plus) A			
(81-91) B			
(69-80) C			
(55-68) D			
(39-54) E			
(21-38) F			
(1-20) G			
Not environmentally friendly - higher CO ₂ emissions			
England & Wales		EU Directive 2002/91/EC 	



CITIZEN



Plot 18 Sonnet Park "Haldon" 40% Share

37 Windhover Road, Stratford-Upon-Avon, CV37 7FY

40% Shared ownership £116,510



2



1



1



B

Plot 18 Sonnet Park "Haldon" 40% Share

Sonnet Park

Banbury Rd, Stratford-upon-Avon CV37 7GY

2 Bedroom Homes

5%
Deposit
Paid*

*5% of
advertised
share only



Description

Plot 18 Sonnet Park "Haldon" 40% Share £129,150 Total Rent £453.39 pcm

READY TO OCCUPY

This house type is 772 sq ft which is larger than the 2 bedroom Persimmon private homes available, "Alnmouth (643sq ft)" and the "Arden" (554 sq ft)

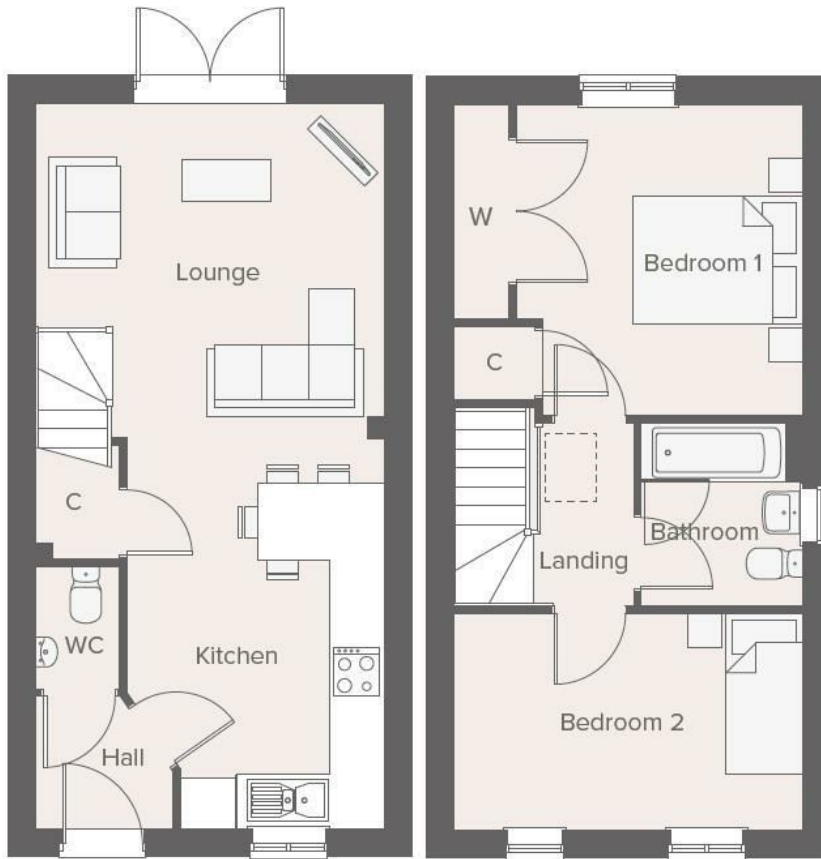
If you would like to apply for this property, please complete our online application form via our Signature Website

- Semi Detached
- Vinyl flooring to wet areas
- Turf to rear garden
- Oven, hob and extractor included
- New build
- 2 parking spaces
- Carpets fitted throughout
- 2 spacious bedrooms
- Good transport links - nr Warwick
- Downstairs cloakroom

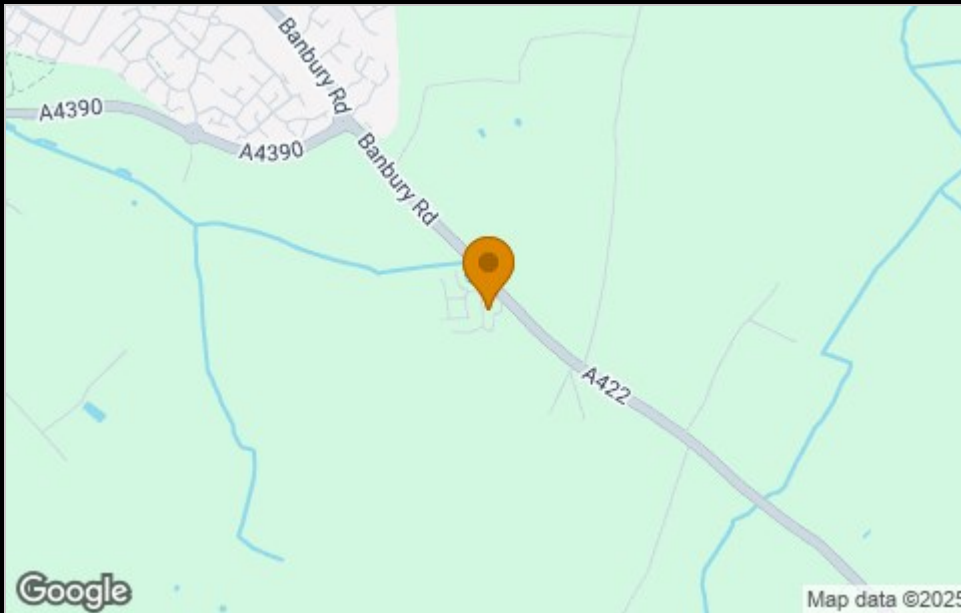




Floor Plan



Area Map



Viewing

Please email sales@citizenhousing.org.uk if you wish to arrange a viewing appointment for this property or require further information.

These particulars, whilst believed to be accurate are set out as a general outline only for guidance and do not constitute any part of an offer or contract. Intending purchasers should not rely on them as statements of representation of fact, but must satisfy themselves by inspection or otherwise as to their accuracy. No person in this firm's employment has the authority to make or give any representation or warranty in respect of the property.

4040 Lakeside, Solihull, West Midlands, B37 7YN

Email: sales@citizenhousing.org.uk or visit www.citizenhousing.org.uk

Energy Efficiency Graph

