



CITIZEN



Plot 186 Park Gate - 40% share "The Hardwick"

10 Whitebeam Close, Lea Castle, Kidderminster, DY10 3GP

40% Shared ownership £95,598



Plot 186 Park Gate - 40% share "The Hardwick"



Description

Plot 186-Park Gate - 40% share available £95,598
Total Rent £382.35 pcm

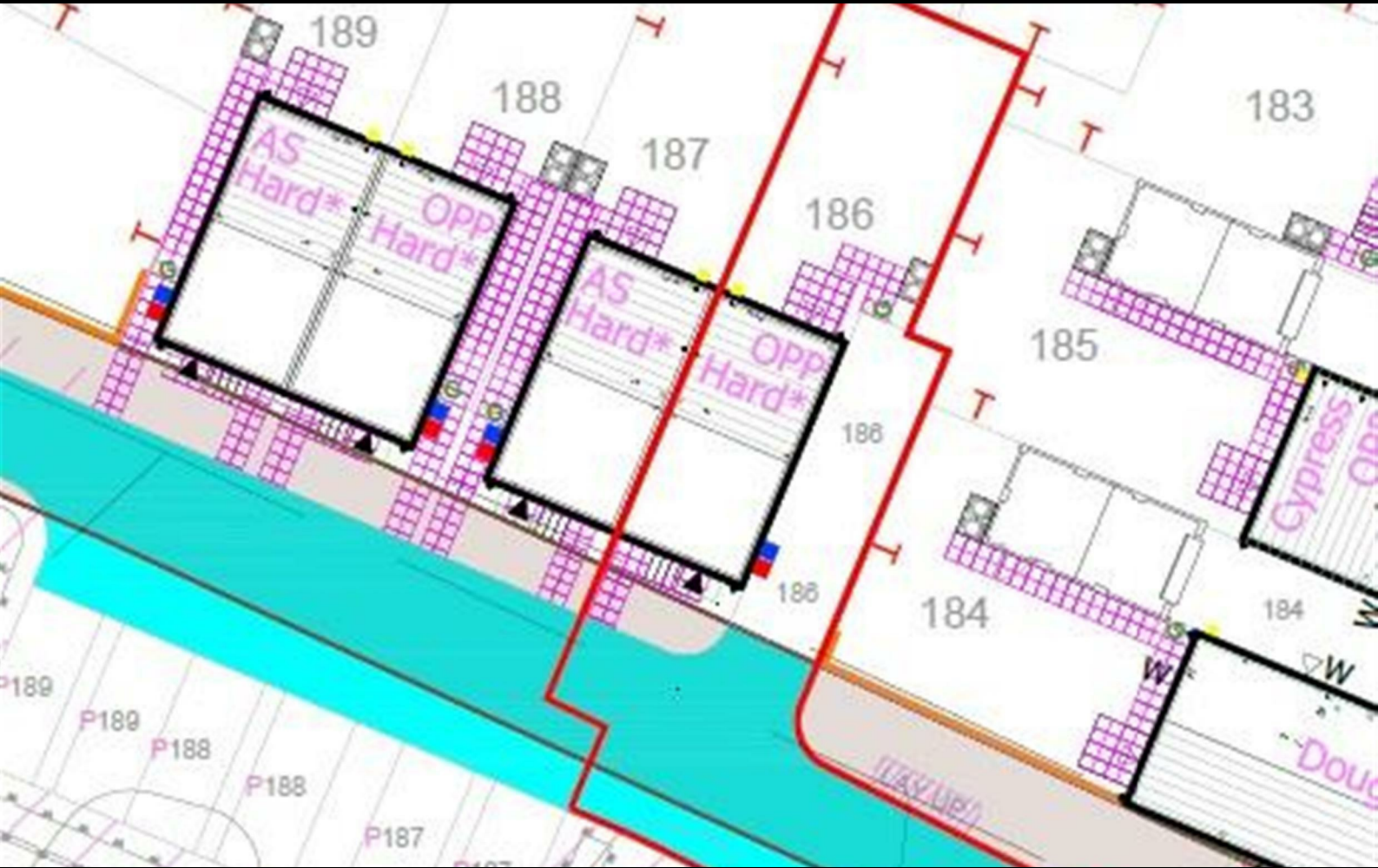
READY TO OCCUPY

If you would like to apply for this property, please complete our online application form via our Signature Website

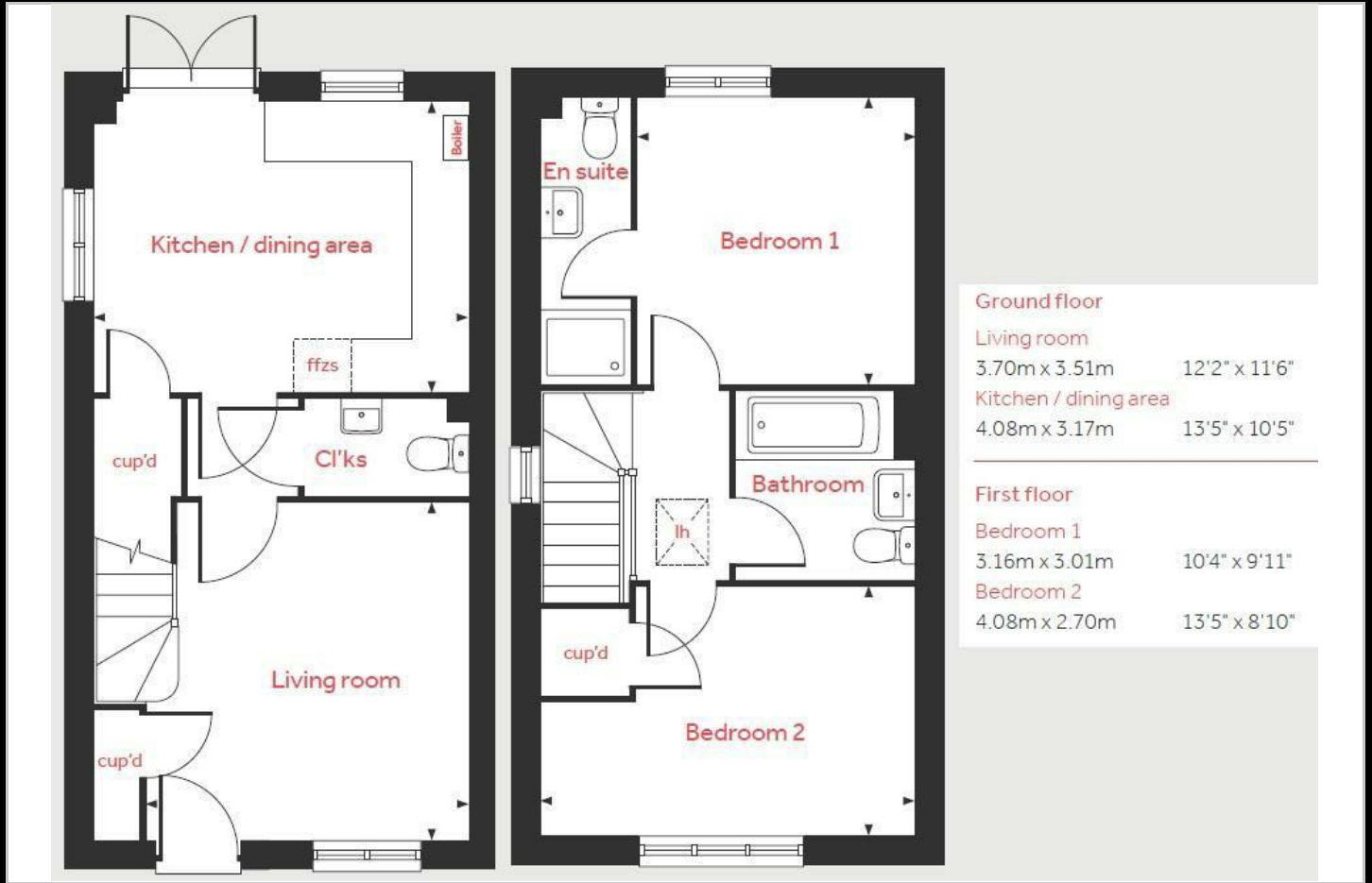
You will need to also register with with the local authority to purchase a property on this development, please visit - www.homechoiceplus.org.uk/householdregistrationform

- Vinyl flooring to wet areas
- Turf to front and rear gardens
- Driveway parking
- Semi detached
- Brushed steel oven, ceramic hob & extractor
- En suite to master bedroom
- 1.8m Fencing to rear
- 2 spacious bedrooms
- Downstairs cloakroom
- near Kidderminster

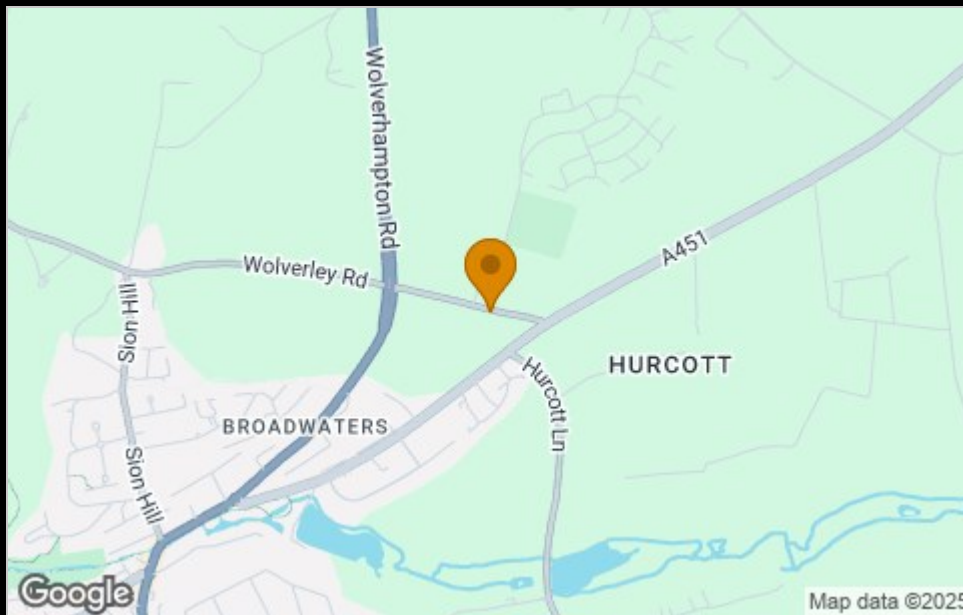




Floor Plan



Area Map



Viewing

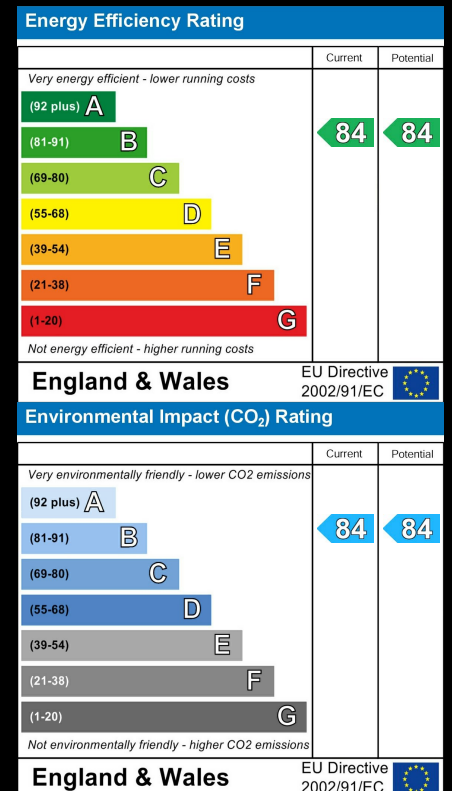
Please contact our Sales Advisor on 07807 787747 for further details of if you wish to arrange a viewing appointment for this property

These particulars, whilst believed to be accurate are set out as a general outline only for guidance and do not constitute any part of an offer or contract. Intending purchasers should not rely on them as statements of representation of fact, but must satisfy themselves by inspection or otherwise as to their accuracy. No person in this firm's employment has the authority to make or give any representation or warranty in respect of the property.

4040 Lakeside, Solihull, West Midlands, B37 7YN

Email: sales@citizenhousing.org.uk or visit www.citizenhousing.org.uk

Energy Efficiency Graph





CITIZEN



Plot 187 Park Gate - 40% share "The Hardwick"

12 Whitebeam Close, Lea Castle, Kidderminster, DY10 3GP

40% Shared ownership £96,598



2



1



1



B

Plot 187 Park Gate - 40% share "The Hardwick"



Description

Plot 187-Park Gate - 40% share available £96,598
Total Rent £385.79 pcm

READY TO OCCUPY

If you would like to apply for this property, please complete our online application form via our Signature Website

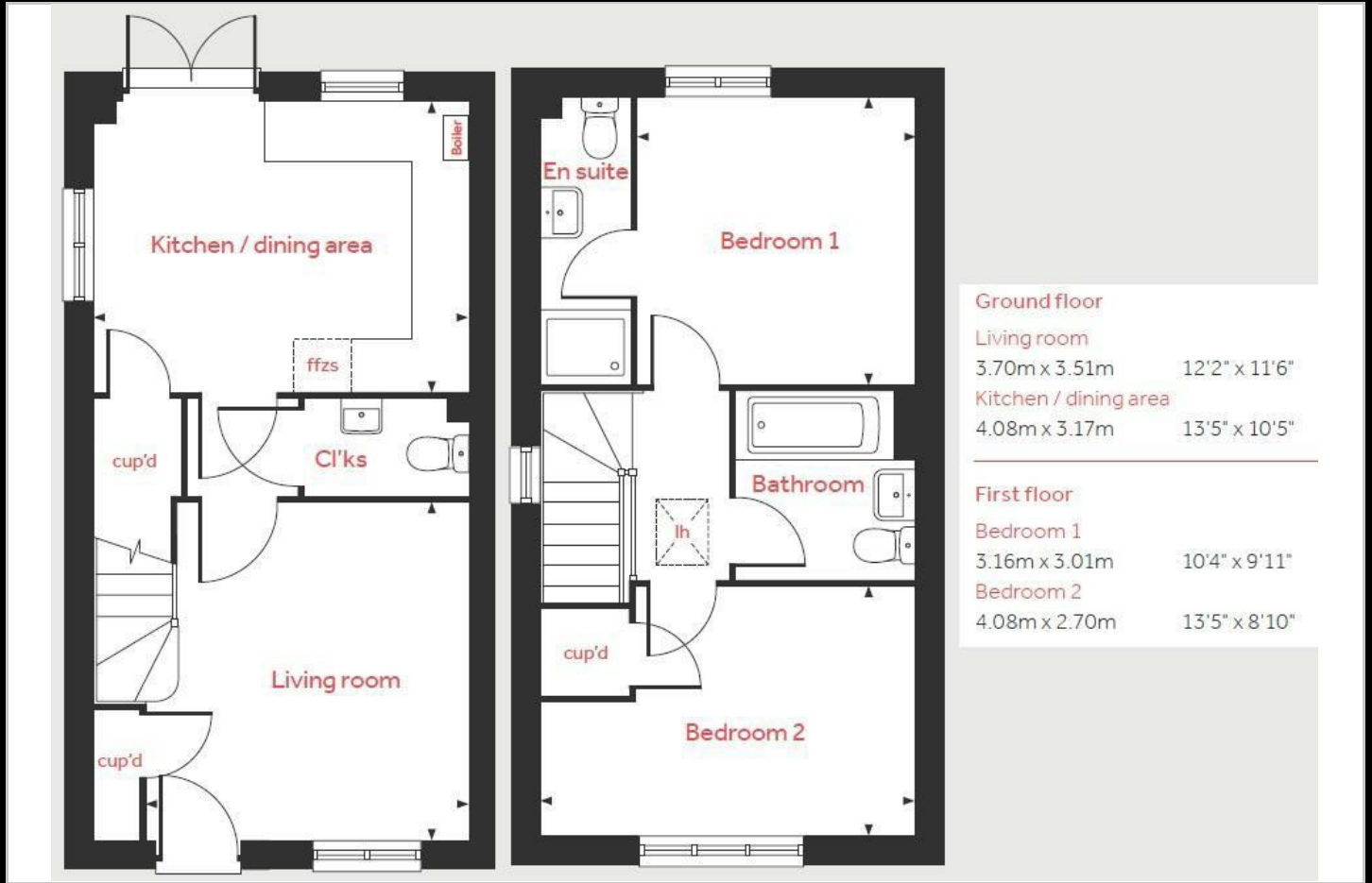
You will need to also register with the local authority to purchase a property on this development, please visit - www.homechoiceplus.org.uk/householdregistrationform

- Vinyl flooring to wet areas
- Turf to front and rear gardens
- 2 Parking spaces
- Semi detached
- Brushed steel oven, ceramic hob & extractor
- En suite to master bedroom
- 1.8m Fencing to rear
- 2 spacious bedrooms
- Downstairs cloakroom
- near Kidderminster

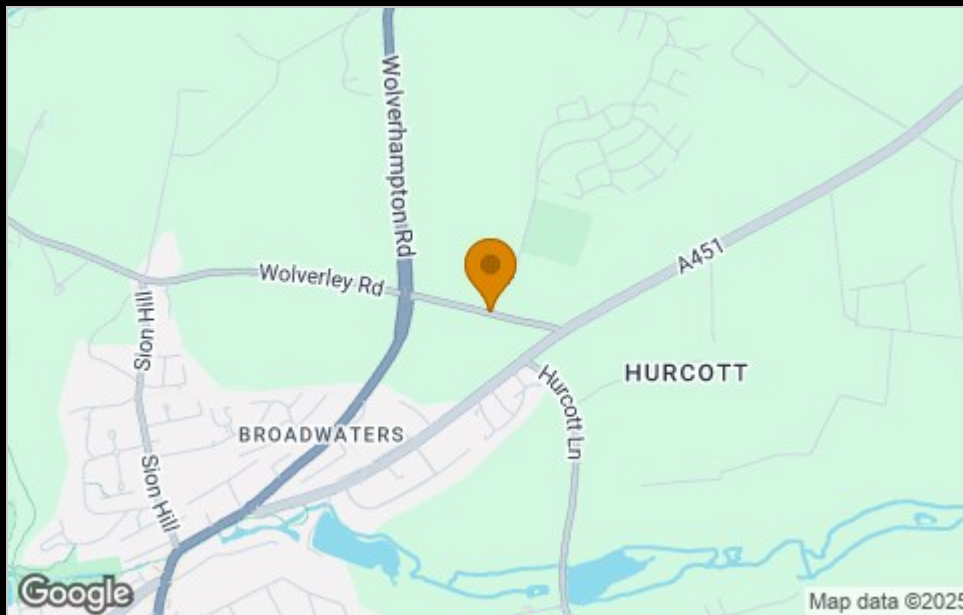




Floor Plan



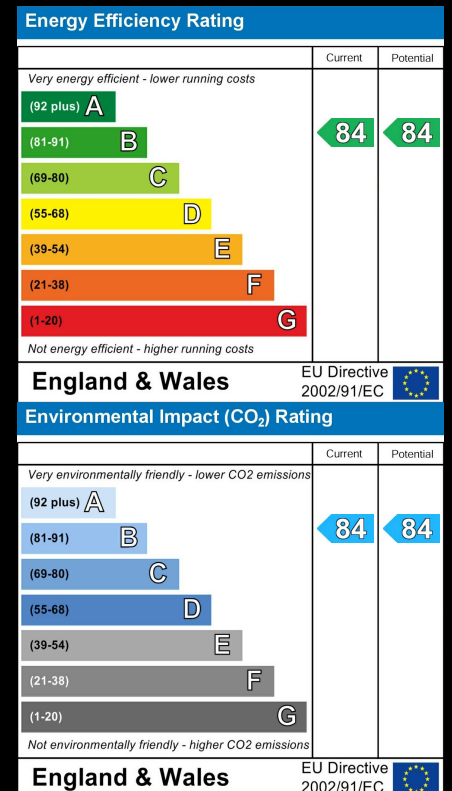
Area Map



Viewing

Please contact our Sales Advisor on 07807 787747 for further details or if you wish to arrange a viewing appointment for this property

Energy Efficiency Graph



These particulars, whilst believed to be accurate are set out as a general outline only for guidance and do not constitute any part of an offer or contract. Intending purchasers should not rely on them as statements of representation of fact, but must satisfy themselves by inspection or otherwise as to their accuracy. No person in this firm's employment has the authority to make or give any representation or warranty in respect of the property.

4040 Lakeside, Solihull, West Midlands, B37 7YN

Email: sales@citizenhousing.org.uk or visit www.citizenhousing.org.uk



CITIZEN



Plot 188 Park Gate - 40% share "The Hardwick"

14 Whitebeam Close, Lea Castle, Kidderminster, DY10 3GP

40% Shared ownership £96,958



2



1



1



B

Plot 188 Park Gate - 40% share "The Hardwick"



Description

Plot 188-Park Gate - 40% share available £96,598
Total Rent £385.79 pcm

Ready to Occupy March 2025 - AVAILABLE TO RESERVE NOW

If you would like to apply for this property, please complete our online application form via our Signature Website

You will need to also register with with the local authority to purchase a property on this development, please visit - www.homechoiceplus.org.uk/householdregistrationform

- Vinyl flooring to wet areas
- Turf to front and rear gardens
- 2 Parking spaces
- Semi detached
- Brushed steel oven, ceramic hob & extractor
- En suite to master bedroom
- 1.8m Fencing to rear
- 2 spacious bedrooms
- Downstairs cloakroom
- near Kidderminster

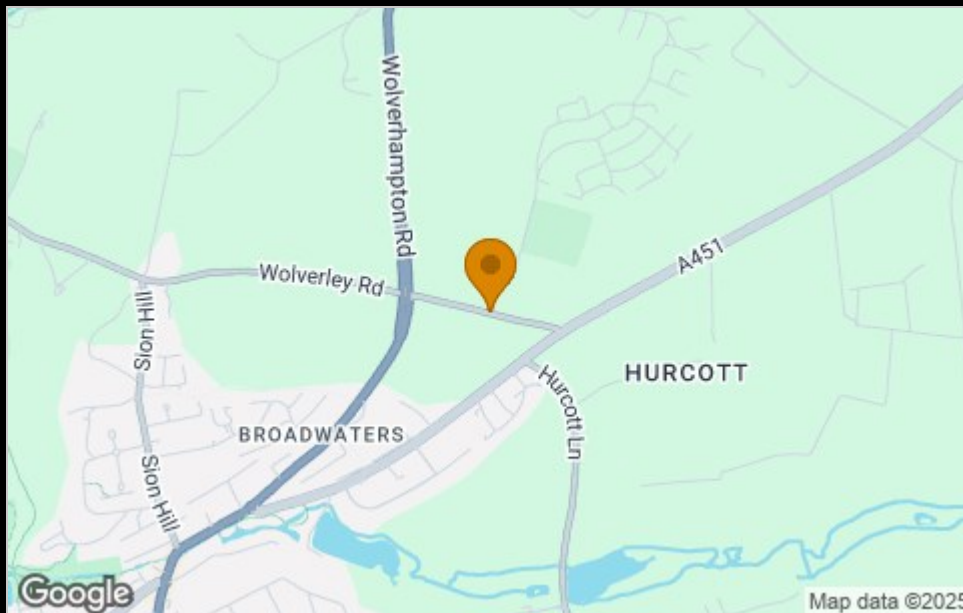




Floor Plan



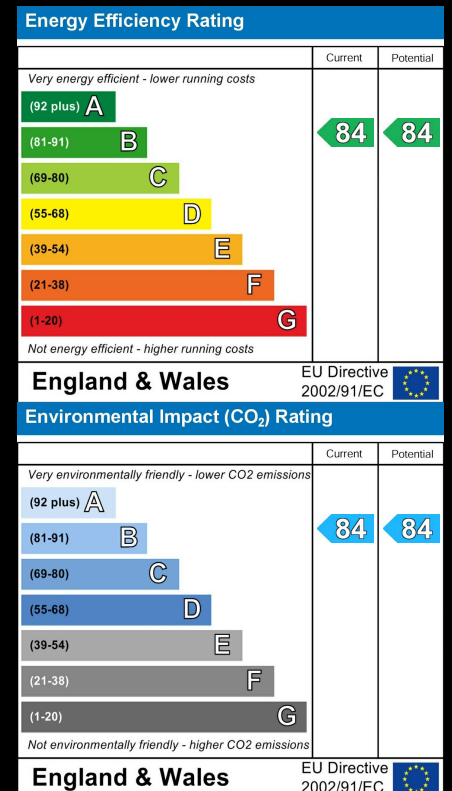
Area Map



Viewing

Please contact our Sales Advisor on 07807 787747 for further details or if you wish to arrange a viewing appointment for this property

Energy Efficiency Graph



These particulars, whilst believed to be accurate are set out as a general outline only for guidance and do not constitute any part of an offer or contract. Intending purchasers should not rely on them as statements of representation of fact, but must satisfy themselves by inspection or otherwise as to their accuracy. No person in this firm's employment has the authority to make or give any representation or warranty in respect of the property.

4040 Lakeside, Solihull, West Midlands, B37 7YN

Email: sales@citizenhousing.org.uk or visit www.citizenhousing.org.uk